

Performance (STRESS values) for large colour difference data (LCD)

iimp=128, OS=OSA colour difference pairs %		LABmin,max,mean STRESS				CMCmin,max,mean STRESS				C94min,max,mean STRESS				C00min,max,mean STRESS				C85min,max,mean STRESS			
ia	d_range	LABmin	LABmax	LABmean	LABSTRESS	CMCmin	CMCmax	CMCmean	CMCSTRESS	C94min	C94max	C94mean	C94STRESS	C00min	C00max	C00mean	C00STRESS	C85min	C85max	C85mean	C85STRESS
128 128	0.0 to <99	7.33	21.63	14.32	24.5	3.56	22.81	11.49	32.8	2.67	14.8	8.75	21.6	2.87	15.55	8.89	22.7	14.18	152.11	44.66	44.2
128 0	0.0 to <5.0	%																			
128 0	0.0 to <0.5	%																			
128 0	0.5 to <1.0	%																			
128 0	1.0 to <1.5	%																			
128 0	1.5 to <2.0	%																			
128 0	2.0 to <5.0	%																			
128 9	5.0 to <10	7.33	9.86	8.71	10.0	3.56	12.1	7.63	8.7	2.67	6.98	4.94	11.3	2.87	8.34	5.29	12.5	14.18	40.41	25.32	15.6
128 69	10 to <15	10.2	14.98	12.98	24.1	5.1	22.81	11.8	31.2	3.72	12.76	8.6	23.4	4.05	15.55	9.09	23.8	18.48	130.5	44.25	28.1
128 46	15 to <20	15.04	19.7	16.86	22.0	6.23	20.28	11.58	26.1	5.08	13.57	9.54	23.8	5.15	13.81	9.19	22.2	22.23	124.11	47.3	28.2
128 4	20 to <25	20.01	21.63	20.85	3.8	9.66	20.42	13.83	12.6	8.32	14.8	10.8	15.7	7.07	14.01	10.26	16.8	26.36	152.11	64.8	20.5
128 0	25 to <30	%																			
128 0	30 to <99	%																			
iimp=128, OS=OSA colour difference pairs %																					
ia d_rangeC00 LABmin,max,mean STRESS		CMCmin,max,mean STRESS				C94min,max,mean STRESS				C00min,max,mean STRESS				C85min,max,mean STRESS							
128 128	0.0 to <99	7.33	21.63	14.32	24.5	3.56	22.81	11.49	32.8	2.67	14.8	8.75	21.6	2.87	15.55	8.89	22.7	14.18	152.11	44.66	44.2
128 6	0.0 to <5.0	7.33	14.28	9.61	9.9	3.56	7.53	5.05	10.6	2.67	4.43	3.68	13.4	2.87	4.75	3.75	15.0	15.39	29.69	22.56	19.1
128 0	0.0 to <0.5	%																			
128 0	0.5 to <1.0	%																			
128 0	1.0 to <1.5	%																			
128 0	1.5 to <2.0	%																			
128 6	2.0 to <5.0	7.33	14.28	9.61	9.9	3.56	7.53	5.05	10.6	2.67	4.43	3.68	13.4	2.87	4.75	3.75	15.0	15.39	29.69	22.56	19.1
128 83	5.0 to <10	8.75	21.63	14.43	24.4	5.78	22.81	10.51	31.8	4.67	12.14	7.99	23.7	5.15	9.87	7.88	23.3	14.18	130.5	37.18	28.2
128 38	10 to <15	10.63	20.68	14.9	21.4	9.59	20.42	14.39	23.7	8.13	14.8	11.17	23.6	10.13	14.25	11.75	20.6	26.16	152.11	64.9	28.3
128 1	15 to <20	11.98	11.98	11.98	0.1	20.91	20.91	20.91	0.1	10.79	10.79	10.79	0.1	15.55	15.55	15.55	0.1	28.79	28.79	28.79	0.1
128 0	20 to <25	%																			
128 0	25 to <30	%																			
128 0	30 to <99	%																			
iimp=128, OS=OSA colour difference pairs %																					
ia d_rangeC85 LABmin,max,mean STRESS		CMCmin,max,mean STRESS				C94min,max,mean STRESS				C00min,max,mean STRESS				C85min,max,mean STRESS							
128 116	0.0 to <99	7.33	21.63	14.23	23.8	3.56	22.81	11.41	32.4	2.67	12.85	8.39	22.1	2.87	15.55	8.61	23.3	14.18	82.27	37.02	37.1
128 0	0.0 to <5.0	%																			
128 0	0.0 to <0.5	%																			
128 0	0.5 to <1.0	%																			
128 0	1.0 to <1.5	%																			
128 0	1.5 to <2.0	%																			
128 0	2.0 to <5.0	%																			
128 0	5.0 to <10	%																			
128 1	10 to <15	9.01	9.01	9.01	0.1	6.28	6.28	6.28	0.1	5.18	5.18	5.18	0.1	5.97	5.97	5.97	0.1	14.18	14.18	14.18	0.1
128 3	15 to <20	7.33	10.69	9.14	4.3	3.56	9.47	5.63	4.3	2.67	5.83	3.76	9.0	2.87	7.07	4.3	12.2	15.39	18.48	17.01	22.3
128 13	20 to <25	8.39	15.33	11.92	13.6	4.78	14.48	9.57	15.3	3.72	7.89	6.15	15.9	3.98	9.11	6.73	16.6	20.28	24.8	22.93	13.7
128 26	25 to <30	7.51	21.63	14.66	20.0	5.45	20.91	10.47	22.6	4.21	10.79	7.59	21.3	3.87	15.55	7.87	19.9	25.12	29.72	27.71	27.5
128 73	30 to <99	8.94	21.07	14.77	24.0	6.23	22.81	12.38	30.9	5.08	12.85	9.31	24.2	5.72	14.25	9.42	24.0	30.08	82.27	43.98	28.6

see similar files: http://130.149.60.45/~farbmetrik/VE93/VE93L0NA.TXT /.PS
 technical information: http://www.ps.bam.de or http://130.149.60.45/~farbmetrik

TUB registration: 20140801-VE93/VE93L0NA.TXT /.PS
 application for measurement of display or printer output
 TUB material: code=rh4ta

Performance (STRESS values) for large colour difference data (LCD)

iimp=844, MU=MUNSELL colour difference pairs %		LABmin,max,mean STRESS				CMCmin,max,mean STRESS				C94min,max,mean STRESS				C00min,max,mean STRESS				C85min,max,mean STRESS					
ia	d_range	LABmin	LABmax	LABmean	LABSTRESS	CMCmin	CMCmax	CMCmean	CMCSTRESS	C94min	C94max	C94mean	C94STRESS	C00min	C00max	C00mean	C00STRESS	C85min	C85max	C85mean	C85STRESS		
844	844	0.0	<99	4.17	22.59	10.05	17.2	3.37	17.95	8.26	31.3	2.71	12.3	7.35	31.3	2.55	16.22	6.84	30.2	7.56	128.5	54.17	54.8
844	17	0.0	<5.0	4.17	4.97	4.63	22.7	3.67	8.5	6.27	19.1	3.14	3.96	3.58	21.6	2.89	5.02	3.56	35.0	7.56	24.08	17.73	22.6
844	0	0.0	<0.5	%																			
844	0	0.5	<1.0	%																			
844	0	1.0	<1.5	%																			
844	0	1.5	<2.0	%																			
844	17	2.0	<5.0	4.17	4.97	4.63	22.7	3.67	8.5	6.27	19.1	3.14	3.96	3.58	21.6	2.89	5.02	3.56	35.0	7.56	24.08	17.73	22.6
844	411	5.0	<10	5.01	9.99	8.58	18.5	3.37	12.89	6.82	25.0	2.71	9.92	6.14	26.5	2.55	9.56	5.67	25.1	9.23	86.67	39.97	54.8
844	389	10.0	<15	10.0	14.94	11.33	19.0	4.55	16.69	9.55	24.7	3.41	10.86	8.63	26.6	3.23	12.5	7.99	25.5	10.66	128.5	72.02	55.7
844	23	15.0	<20	15.18	19.34	16.72	20.8	5.63	17.95	12.8	24.3	4.32	11.77	9.18	19.9	3.95	15.5	9.9	32.8	17.38	76.22	35.55	23.6
844	4	20.0	<25	20.81	22.59	21.89	26.7	12.73	14.91	13.48	18.9	11.32	12.3	11.75	27.1	10.59	16.22	12.17	43.8	33.19	52.0	38.12	16.6
844	0	25.0	<30	%																			
844	0	30.0	<99	%																			
iimp=844, MU=MUNSELL colour difference pairs %		LABmin,max,mean STRESS				CMCmin,max,mean STRESS				C94min,max,mean STRESS				C00min,max,mean STRESS				C85min,max,mean STRESS					
ia	d_range	LABmin	LABmax	LABmean	LABSTRESS	CMCmin	CMCmax	CMCmean	CMCSTRESS	C94min	C94max	C94mean	C94STRESS	C00min	C00max	C00mean	C00STRESS	C85min	C85max	C85mean	C85STRESS		
844	844	0.0	<99	4.17	22.59	10.05	17.2	3.37	17.95	8.26	31.3	2.71	12.3	7.35	31.3	2.55	16.22	6.84	30.2	7.56	128.5	54.17	54.8
844	230	0.0	<5.0	4.17	15.18	8.58	22.9	3.37	11.17	5.71	24.2	2.71	5.51	4.26	20.6	2.55	4.99	4.01	27.0	7.56	49.51	25.68	29.0
844	0	0.0	<0.5	%																			
844	0	0.5	<1.0	%																			
844	0	1.0	<1.5	%																			
844	0	1.5	<2.0	%																			
844	230	2.0	<5.0	4.17	15.18	8.58	22.9	3.37	11.17	5.71	24.2	2.71	5.51	4.26	20.6	2.55	4.99	4.01	27.0	7.56	49.51	25.68	29.0
844	527	5.0	<10	4.74	19.17	10.37	16.5	5.28	16.76	9.03	26.0	3.85	10.86	8.22	24.8	5.02	9.71	7.47	23.1	12.0	128.5	61.08	49.5
844	84	10.0	<15	10.12	22.59	11.77	20.6	9.09	17.95	10.17	24.5	7.47	11.79	10.13	17.8	10.01	13.83	10.31	27.3	19.37	114.41	89.03	27.3
844	3	15.0	<20	18.57	20.81	19.57	29.8	13.6	14.91	14.19	21.4	11.48	12.3	11.85	30.2	15.06	16.22	15.59	43.4	42.96	52.0	47.58	1.1
844	0	20.0	<25	%																			
844	0	25.0	<30	%																			
844	0	30.0	<99	%																			
iimp=844, MU=MUNSELL colour difference pairs %		LABmin,max,mean STRESS				CMCmin,max,mean STRESS				C94min,max,mean STRESS				C00min,max,mean STRESS				C85min,max,mean STRESS					
ia	d_range	LABmin	LABmax	LABmean	LABSTRESS	CMCmin	CMCmax	CMCmean	CMCSTRESS	C94min	C94max	C94mean	C94STRESS	C00min	C00max	C00mean	C00STRESS	C85min	C85max	C85mean	C85STRESS		
844	701	0.0	<99	4.17	22.59	9.95	15.9	3.37	17.95	7.68	30.5	2.71	12.3	6.72	29.7	2.55	16.22	6.37	28.3	7.56	98.82	42.07	50.8
844	0	0.0	<5.0	%																			
844	0	0.0	<0.5	%																			
844	0	0.5	<1.0	%																			
844	0	1.0	<1.5	%																			
844	0	1.5	<2.0	%																			
844	0	2.0	<5.0	%																			
844	2	5.0	<10	4.69	5.26	4.97	24.4	4.15	4.79	4.47	18.8	3.14	3.58	3.36	24.8	3.54	4.08	3.81	34.0	7.56	9.23	8.4	1.2
844	27	10.0	<15	4.5	14.85	8.18	19.9	3.7	9.16	6.03	23.3	3.14	7.08	4.56	19.1	2.95	8.23	5.19	32.6	10.27	14.92	13.31	24.3
844	106	15.0	<20	4.42	15.18	9.06	21.7	3.37	11.15	6.52	25.0	2.71	7.52	4.85	18.8	2.55	10.45	5.1	27.5	15.03	19.95	17.82	28.1
844	115	20.0	<25	4.17	14.75	9.31	24.1	3.68	13.27	7.28	25.5	3.1	8.17	5.36	21.7	2.89	10.59	5.53	29.9	20.0	24.96	22.29	27.1
844	102	25.0	<30	5.39	17.87	10.68	21.7	3.74	16.41	8.38	24.7	3.14	9.8	6.18	18.7	2.93	11.82	6.15	27.6	25.13	29.75	27.34	27.4
844	349	30.0	<99	6.19	22.59	10.38	20.0	3.54	17.95	8.12	24.4	2.85	12.3	8.08	26.5	2.68	16.22	7.2	26.4	30.08	98.82	62.67	56.6

see similar files: http://130.149.60.45/~farbmetrik/VE93/VE93L0NA.TXT /.PS
technical information: http://www.ps.bam.de or http://130.149.60.45/~farbmetrik

TUB registration: 20140801-VE93/VE93L0NA.TXT /.PS
application for measurement of display or printer output, no separation
TUB material: code=rh4ta

Performance (STRESS values) for large colour difference data (LCD)

iimp=1308, PO=POINTER colour difference pairs %

ia	d_rangeLAB	LABmin,max,mean	STRESS	CMCmin,max,mean	STRESS	C94min,max,mean	STRESS	C00min,max,mean	STRESS	C85min,max,mean	STRESS
1308 1308	0.0 to <99	0.87 26.19 8.9	29.6	0.5 29.0 7.68	38.5	0.47 19.18 6.12	30.6	0.43 21.25 6.45	34.0	2.44 144.82 38.31	40.0
1308 268	0.0 to <5.0	0.87 4.99 3.36	25.7	0.5 7.12 2.83	32.6	0.47 4.44 2.39	26.1	0.43 6.45 2.47	31.1	2.44 47.47 16.75	34.3
1308 0	0.0 to <0.5 %										
1308 1	0.5 to <1.0	0.87 0.87 0.1	0.1	0.5 0.5 0.5	0.1	0.51 0.51 0.51	0.1	0.52 0.52 0.52	0.1	3.89 3.89 3.89	0.1
1308 8	1.0 to <1.5	1.12 1.48 1.36	25.4	0.72 1.65 1.12	40.2	0.74 1.31 1.04	28.7	0.79 1.46 1.01	34.8	3.6 10.5 6.63	24.9
1308 24	1.5 to <2.0	1.5 1.91 1.69	32.6	0.56 2.3 1.37	39.7	0.47 1.8 1.26	31.1	0.43 2.39 1.34	39.0	2.77 15.44 8.6	25.5
1308 235	2.0 to <5.0	2.0 4.99 3.61	26.3	0.89 7.12 3.04	33.9	0.62 4.44 2.56	26.5	0.72 6.45 2.64	31.9	2.44 47.47 17.98	34.6
1308 567	5.0 to <10	5.01 9.99 7.44	24.7	2.15 14.79 6.32	32.9	1.65 9.27 5.12	24.8	1.76 12.02 5.39	28.9	8.48 79.77 31.98	35.7
1308 324	10 to <15	10.02 14.98 12.23	25.0	4.16 24.13 10.69	31.8	3.16 14.09 8.39	25.3	3.5 18.09 8.99	30.2	16.1 108.79 50.58	33.1
1308 136	15 to <20	15.01 19.87 16.68	26.1	8.02 25.66 14.35	32.9	6.31 17.67 11.3	26.1	5.68 18.39 11.68	31.3	28.52 125.54 71.37	36.2
1308 10	20 to <25	20.02 24.26 21.85	24.1	13.26 29.0 21.24	37.7	10.13 18.81 15.21	28.3	9.0 21.25 15.92	33.1	66.12 144.82 103.8	25.6
1308 3	25 to <30	25.47 26.19 25.83	19.6	25.23 27.33 26.38	29.6	17.74 19.18 18.59	25.6	17.48 21.22 19.86	27.7	94.53 133.49 120.2	28.4
1308 0	30 to <99 %										

iimp=1308, PO=POINTER colour difference pairs %

ia	d_rangeC00	LABmin,max,mean	STRESS	CMCmin,max,mean	STRESS	C94min,max,mean	STRESS	C00min,max,mean	STRESS	C85min,max,mean	STRESS
1308 1308	0.0 to <99	0.87 26.19 8.9	29.6	0.5 29.0 7.68	38.5	0.47 19.18 6.12	30.6	0.43 21.25 6.45	34.0	2.44 144.82 38.31	40.0
1308 549	0.0 to <5.0	0.87 12.69 5.2	24.6	0.5 9.87 3.87	32.7	0.47 6.37 3.23	24.8	0.43 4.98 3.19	28.9	2.44 64.3 22.28	35.6
1308 1	0.0 to <0.5	1.67 1.67 0.1	0.1	0.56 0.56 0.56	0.1	0.47 0.47 0.47	0.1	0.43 0.43 0.43	0.1	2.77 2.77 2.77	0.1
1308 9	0.5 to <1.0	0.87 2.19 1.48	24.7	0.5 1.19 0.9	38.9	0.51 1.3 0.83	28.8	0.52 0.97 0.81	34.1	2.44 10.5 5.12	25.9
1308 35	1.0 to <1.5	1.36 3.95 1.97	32.8	0.96 1.98 1.35	39.2	0.91 1.51 1.25	31.8	1.02 1.48 1.24	39.6	3.11 15.44 9.34	28.8
1308 56	1.5 to <2.0	1.59 5.57 3.04	32.0	1.37 3.97 2.19	39.0	1.17 2.64 1.85	32.4	1.5 1.98 1.78	38.9	4.39 27.75 14.39	32.0
1308 448	2.0 to <5.0	1.5 12.69 5.8	24.1	1.6 9.87 4.34	32.3	1.46 6.37 3.61	24.7	2.0 4.98 3.57	28.8	3.36 64.3 24.67	33.0
1308 535	5.0 to <10	4.12 20.02 10.2	24.4	4.43 18.71 8.47	32.5	3.81 11.38 6.91	24.6	5.0 9.99 7.19	28.7	9.54 108.79 44.58	35.6
1308 188	10 to <15	7.82 21.07 14.24	25.5	8.67 23.03 14.09	34.2	6.91 15.36 10.67	26.3	10.0 14.73 11.9	31.7	16.27 125.54 59.73	34.5
1308 33	15 to <20	12.78 25.81 17.58	33.4	12.32 25.66 20.11	38.6	10.87 17.88 14.45	30.9	15.04 18.74 16.43	38.8	28.52 144.82 72.97	26.2
1308 3	20 to <25	24.26 26.19 25.31	19.6	26.56 29.0 27.63	29.6	18.81 19.18 18.95	25.6	20.87 21.25 21.11	27.7	127.97 133.49 131.4	28.4
1308 0	25 to <30 %										
1308 0	30 to <99 %										

iimp=1308, PO=POINTER colour difference pairs %

ia	d_rangeC85	LABmin,max,mean	STRESS	CMCmin,max,mean	STRESS	C94min,max,mean	STRESS	C00min,max,mean	STRESS	C85min,max,mean	STRESS
1308 1283	0.0 to <99	0.87 25.81 8.7	29.4	0.5 25.66 7.47	38.4	0.47 17.88 5.96	30.5	0.43 18.39 6.3	34.0	2.44 98.43 36.86	39.9
1308 16	0.0 to <5.0	0.87 2.94 1.71	34.4	0.5 2.31 1.3	43.3	0.47 2.05 0.99	34.7	0.43 2.16 1.12	40.7	2.44 4.75 3.67	29.7
1308 0	0.0 to <0.5 %										
1308 0	0.5 to <1.0 %										
1308 0	1.0 to <1.5 %										
1308 0	1.5 to <2.0 %										
1308 16	2.0 to <5.0	0.87 2.94 1.71	34.4	0.5 2.31 1.3	43.3	0.47 2.05 0.99	34.7	0.43 2.16 1.12	40.7	2.44 4.75 3.67	29.7
1308 52	5.0 to <10	1.12 7.58 3.13	32.4	0.72 5.93 2.45	39.4	0.89 4.27 1.96	33.1	0.83 6.45 2.21	39.5	5.16 9.96 8.23	30.1
1308 116	10 to <15	1.31 9.26 4.47	26.7	0.84 9.7 3.51	33.6	1.13 6.58 2.81	26.1	0.97 9.85 3.13	31.9	10.03 14.96 12.95	37.1
1308 143	15 to <20	1.71 10.26 5.26	25.9	1.28 11.77 4.2	32.5	1.37 8.47 3.39	25.8	1.2 12.02 3.7	30.9	15.1 19.94 17.46	36.4
1308 112	20 to <25	2.11 12.69 7.09	27.0	1.6 13.32 5.83	33.9	1.96 9.62 4.66	26.4	1.54 13.2 5.08	32.2	20.1 24.99 22.56	37.4
1308 130	25 to <30	2.84 15.89 7.8	26.6	2.05 19.21 6.62	33.4	2.51 12.46 5.29	26.5	1.79 17.0 5.75	31.4	25.04 29.99 27.29	36.2
1308 714	30 to <99	3.3 25.81 11.06	25.8	2.82 25.66 9.69	35.3	2.64 17.88 7.72	26.6	2.1 18.39 8.04	30.7	30.02 98.43 51.44	36.4

see similar files: http://130.149.60.45/~farbmetrik/VE93/VE93.HTM
technical information: http://www.ps.bam.de or http://130.149.60.45/~farbmetrik

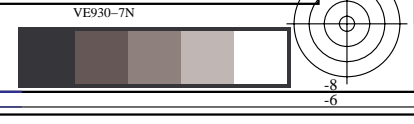
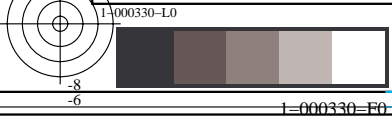
TUB registration: 20140801-VE93/VE93L0NA.TXT /PS
application for measurement of display or printer output, no separation
TUB material: code=rh4ta

Performance (STRESS values) for large colour difference data (LCD)

iimp=292, GU=GUAN colour difference pairs %		LABmin,max,mean STRESS				CMCmin,max,mean STRESS				C94min,max,mean STRESS				C00min,max,mean STRESS				C85min,max,mean STRESS			
ia	d_range	LABmin	LABmax	LABmean	STRESS	CMCmin	CMCmax	CMCmean	STRESS	C94min	C94max	C94mean	STRESS	C00min	C00max	C00mean	STRESS	C85min	C85max	C85mean	STRESS
292 292	0.0 to <99	4.79	20.86	11.42	24.9	2.78	27.8	9.2	34.3	2.3	13.98	8.0	18.8	2.29	15.35	8.19	19.5	7.6	130.36	52.2	42.6
292 1	0.0 to <5.0	4.79	4.79	4.79	0.1	2.78	2.78	2.78	0.1	2.5	2.5	2.5	0.1	2.65	2.65	2.65	0.1	20.02	20.02	20.02	0.1
292 0	0.0 to <0.5 %																				
292 0	0.5 to <1.0 %																				
292 0	1.0 to <1.5 %																				
292 0	1.5 to <2.0 %																				
292 1	2.0 to <5.0	4.79	4.79	4.79	0.1	2.78	2.78	2.78	0.1	2.5	2.5	2.5	0.1	2.65	2.65	2.65	0.1	20.02	20.02	20.02	0.1
292 95	5.0 to <10	5.33	9.97	8.64	15.1	2.86	17.18	6.85	30.0	2.3	9.82	6.4	21.8	2.29	11.12	6.55	22.9	7.6	103.49	48.87	27.5
292 172	10 to <15	10.01	14.83	12.27	17.8	4.99	22.6	10.02	30.2	3.99	13.98	8.67	23.1	3.9	15.35	8.84	23.5	14.3	130.36	54.64	29.1
292 23	15 to <20	15.05	18.64	16.44	14.1	6.14	27.8	13.1	22.9	5.03	13.35	9.84	17.1	4.66	15.33	10.26	20.7	24.73	116.99	48.38	12.1
292 1	20 to <25	20.86	20.86	20.86	0.1	9.35	9.35	9.35	0.1	8.7	8.7	8.7	0.1	9.83	9.83	9.83	0.1	67.31	67.31	67.31	0.1
292 0	25 to <30 %																				
292 0	30 to <99 %																				
iimp=292, GU=GUAN colour difference pairs %		LABmin,max,mean STRESS				CMCmin,max,mean STRESS				C94min,max,mean STRESS				C00min,max,mean STRESS				C85min,max,mean STRESS			
ia	d_range	LABmin	LABmax	LABmean	STRESS	CMCmin	CMCmax	CMCmean	STRESS	C94min	C94max	C94mean	STRESS	C00min	C00max	C00mean	STRESS	C85min	C85max	C85mean	STRESS
292 292	0.0 to <99	4.79	20.86	11.42	24.9	2.78	27.8	9.2	34.3	2.3	13.98	8.0	18.8	2.29	15.35	8.19	19.5	7.6	130.36	52.2	42.6
292 35	0.0 to <5.0	4.79	15.27	9.73	13.7	2.78	7.38	5.12	21.4	2.3	5.12	4.04	17.5	2.29	4.99	4.04	18.8	7.6	29.69	19.76	13.5
292 0	0.0 to <0.5 %																				
292 0	0.5 to <1.0 %																				
292 0	1.0 to <1.5 %																				
292 0	1.5 to <2.0 %																				
292 35	2.0 to <5.0	4.79	15.27	9.73	13.7	2.78	7.38	5.12	21.4	2.3	5.12	4.04	17.5	2.29	4.99	4.04	18.8	7.6	29.69	19.76	13.5
292 186	5.0 to <10	6.31	20.86	11.14	17.9	4.87	17.59	8.93	29.7	4.19	10.8	7.55	22.6	5.01	9.99	7.63	23.3	14.3	105.73	47.66	30.3
292 68	10 to <15	9.25	18.64	12.89	15.0	8.43	22.6	11.64	30.8	7.42	13.98	11.11	23.6	10.21	14.81	11.54	24.8	23.68	130.36	81.48	22.4
292 3	15 to <20	13.81	17.77	15.45	18.7	13.02	27.8	18.6	20.0	10.79	13.35	12.07	17.6	15.07	15.35	15.25	22.1	41.55	56.2	48.27	6.2
292 0	20 to <25 %																				
292 0	25 to <30 %																				
292 0	30 to <99 %																				
iimp=292, GU=GUAN colour difference pairs %		LABmin,max,mean STRESS				CMCmin,max,mean STRESS				C94min,max,mean STRESS				C00min,max,mean STRESS				C85min,max,mean STRESS			
ia	d_range	LABmin	LABmax	LABmean	STRESS	CMCmin	CMCmax	CMCmean	STRESS	C94min	C94max	C94mean	STRESS	C00min	C00max	C00mean	STRESS	C85min	C85max	C85mean	STRESS
292 242	0.0 to <99	4.79	20.86	11.37	23.1	2.78	27.8	9.24	33.5	2.3	13.35	7.3	20.2	2.29	15.35	7.65	21.4	7.6	97.42	40.27	45.3
292 0	0.0 to <5.0 %																				
292 0	0.0 to <0.5 %																				
292 0	0.5 to <1.0 %																				
292 0	1.0 to <1.5 %																				
292 0	1.5 to <2.0 %																				
292 0	2.0 to <5.0 %																				
292 1	5.0 to <10	7.57	7.57	7.57	0.1	3.29	3.29	3.29	0.1	2.33	2.33	2.33	0.1	2.42	2.42	2.42	0.1	7.6	7.6	7.6	0.1
292 7	10 to <15	5.33	11.61	8.51	15.8	2.96	8.48	5.08	18.9	2.5	5.94	3.94	17.3	2.41	7.22	4.18	22.1	11.71	14.94	13.86	7.5
292 27	15 to <20	6.31	14.0	9.44	14.1	2.86	9.63	6.24	22.7	2.3	6.18	4.51	16.8	2.29	7.76	4.95	19.7	15.37	19.85	17.91	13.5
292 43	20 to <25	4.79	15.1	10.88	13.9	2.78	13.62	7.77	25.1	2.5	9.16	5.89	18.5	2.65	14.29	6.62	20.6	20.02	24.79	22.29	14.0
292 36	25 to <30	6.13	16.83	12.19	13.7	3.92	16.47	9.35	21.3	3.3	9.62	6.78	17.3	3.82	10.45	7.24	18.8	25.0	29.93	27.36	14.6
292 128	30 to <99	7.16	20.86	11.89	17.1	5.65	27.8	10.61	30.7	4.57	13.35	8.72	23.4	5.01	15.35	8.92	23.9	30.03	97.42	56.35	29.0

see similar files: http://130.149.60.45/~farbmetrik/VE93/VE93.HTM
 technical information: http://www.ps.bam.de or http://130.149.60.45/~farbmetrik

TUB registration: 20140801-VE93/VE93L0NA.TXT /.PS
 application for measurement of display or printer output, no separation
 TUB material: code=rh4ta



Performance (STRESS values) for large colour difference data (LCD)

iimp=144, ZH=ZHU colour difference pairs %																							
ia	d_range	LABmin	max	mean	STRESS	CMCmin	max	mean	STRESS	C94min	max	mean	STRESS	C00min	max	mean	STRESS	C85min	max	mean	STRESS		
144	144	0.0 to <99	4.85	19.79	9.91	26.3	3.16	27.5	7.96	47.1	2.58	19.55	6.38	34.5	2.44	15.53	5.8	30.9	9.55	121.76	41.71	36.7	
144	3	0.0 to <5.0	4.85	4.96	4.91	12.3	3.24	3.82	3.44	35.0	3.35	3.43	3.39	12.3	3.39	3.69	3.5	4.6	10.61	23.15	18.87	12.9	
144	0	0.0 to <0.5 %																					
144	0	0.5 to <1.0 %																					
144	0	1.0 to <1.5 %																					
144	0	1.5 to <2.0 %																					
144	3	2.0 to <5.0	4.85	4.96	4.91	12.3	3.24	3.82	3.44	35.0	3.35	3.43	3.39	12.3	3.39	3.69	3.5	4.6	10.61	23.15	18.87	12.9	
144	70	5.0 to <10	5.0	9.98	7.4	27.7	3.16	14.13	5.87	47.6	2.58	9.23	4.86	33.8	2.44	9.85	4.74	32.5	9.55	91.06	31.38	29.7	
144	62	10 to <15	10.02	14.59	11.92	29.6	4.0	21.98	8.82	48.2	2.81	14.12	6.98	34.8	2.64	12.49	6.15	33.2	13.08	121.76	49.61	31.4	
144	9	15 to <20	15.55	19.79	17.2	23.6	5.69	27.5	19.71	40.0	3.99	19.55	15.06	24.7	3.89	15.53	12.34	16.6	54.01	117.36	75.2	33.0	
144	0	20 to <25 %																					
144	0	25 to <30 %																					
144	0	30 to <99 %																					

iimp=144, ZH=ZHU colour difference pairs %																							
ia	d_range	C00	LABmin	max	mean	STRESS	CMCmin	max	mean	STRESS	C94min	max	mean	STRESS	C00min	max	mean	STRESS	C85min	max	mean	STRESS	
144	144	0.0 to <99	4.85	19.79	9.91	26.3	3.16	27.5	7.96	47.1	2.58	19.55	6.38	34.5	2.44	15.53	5.8	30.9	9.55	121.76	41.71	36.7	
144	73	0.0 to <5.0	4.85	16.42	8.06	27.2	3.16	10.19	4.93	48.4	2.58	5.71	4.15	34.0	2.44	4.98	4.05	32.8	9.55	65.5	29.18	29.1	
144	0	0.0 to <0.5 %																					
144	0	0.5 to <1.0 %																					
144	0	1.0 to <1.5 %																					
144	0	1.5 to <2.0 %																					
144	73	2.0 to <5.0	4.85	16.42	8.06	27.2	3.16	10.19	4.93	48.4	2.58	5.71	4.15	34.0	2.44	4.98	4.05	32.8	9.55	65.5	29.18	29.1	
144	60	5.0 to <10	6.3	16.88	11.11	30.1	4.62	21.98	9.28	47.9	4.58	11.96	7.42	34.4	5.02	9.85	6.59	32.1	15.64	121.76	51.25	32.0	
144	9	10 to <15	10.34	19.79	15.11	23.6	9.41	27.31	19.48	40.0	10.14	19.55	14.97	24.7	10.58	14.57	12.49	16.6	32.12	117.36	73.39	33.0	
144	2	15 to <20	17.12	19.13	18.13	0.1	26.21	27.5	26.85	4.8	16.93	18.9	17.91	0.1	15.49	15.53	15.51	5.5	67.57	72.73	70.15	11.7	
144	0	20 to <25 %																					
144	0	25 to <30 %																					
144	0	30 to <99 %																					

iimp=144, ZH=ZHU colour difference pairs %																							
ia	d_range	C85	LABmin	max	mean	STRESS	CMCmin	max	mean	STRESS	C94min	max	mean	STRESS	C00min	max	mean	STRESS	C85min	max	mean	STRESS	
144	141	0.0 to <99	4.85	19.79	9.82	26.1	3.16	27.5	7.85	47.4	2.58	19.55	6.22	34.5	2.44	15.53	5.71	30.9	9.55	95.98	40.08	36.7	
144	0	0.0 to <5.0 %																					
144	0	0.0 to <0.5 %																					
144	0	0.5 to <1.0 %																					
144	0	1.0 to <1.5 %																					
144	0	1.5 to <2.0 %																					
144	0	2.0 to <5.0 %																					
144	1	5.0 to <10	7.55	7.55	7.55	0.1	3.16	3.16	3.16	0.1	2.58	2.58	2.58	0.1	2.44	2.44	2.44	0.1	9.55	9.55	9.55	0.1	
144	18	10 to <15	4.85	11.06	6.44	32.9	3.37	7.47	4.63	41.0	2.71	4.6	3.66	28.6	2.55	4.98	3.88	26.6	10.61	14.98	12.63	39.8	
144	13	15 to <20	5.42	12.61	9.14	30.2	3.82	10.27	6.01	42.2	2.81	6.76	4.61	29.1	2.64	7.25	4.67	27.1	15.01	19.43	17.44	37.8	
144	15	20 to <25	4.92	12.99	8.42	30.3	3.24	12.09	6.31	41.4	3.39	6.68	4.78	28.5	3.39	7.82	5.18	26.8	20.29	24.92	22.69	38.5	
144	12	25 to <30	6.16	10.52	8.03	30.4	4.02	13.72	7.22	40.6	4.25	8.97	5.87	28.2	3.9	9.85	5.68	19.9	25.87	29.9	27.57	37.6	
144	82	30 to <99	5.46	19.79	11.22	26.2	3.19	27.5	9.28	48.8	3.11	19.55	7.39	34.1	2.9	15.53	6.42	32.7	30.66	95.98	55.08	28.1	

see similar files: http://130.149.60.45/~farbmetrik/VE93/VE93.HTM
 technical information: http://www.ps.bam.de or http://130.149.60.45/~farbmetrik

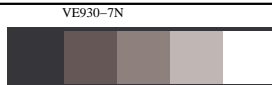
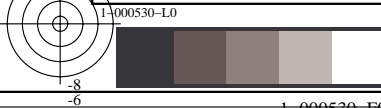
TUB registration: 20140801-VE93/VE93L0NA.TXT /.PS
 application for measurement of display or printer output, no separation
 TUB material: code=rh4ta

Performance (STRESS values) for large colour difference data (LCD)

iimp=238, BA=BADU_P colour difference pairs %		LABmin,max,mean STRESS				CMCmin,max,mean STRESS				C94min,max,mean STRESS				C00min,max,mean STRESS				C85min,max,mean STRESS				
ia	d_range	LABmin	LABmax	LABmean	LABSTRESS	CMCmin	CMCmax	CMCmean	CMCSTRESS	C94min	C94max	C94mean	C94STRESS	C00min	C00max	C00mean	C00STRESS	C85min	C85max	C85mean	C85STRESS	
238 238	0.0 to <99	4.11	35.78	11.74	30.6	2.89	22.67	9.42	32.4	2.94	14.94	7.65	20.1	3.28	18.02	7.92	19.2	10.78	124.47	47.7	39.6 %	
238 8	0.0 to <5.0	4.11	4.92	4.63	10.7	2.89	6.01	4.64	19.2	3.81	4.8	4.45	10.7	3.4	4.61	3.89	20.0	22.01	54.79	40.72	6.6 %	
238 0	0.0 to <0.5 %																					
238 0	0.5 to <1.0 %																					
238 0	1.0 to <1.5 %																					
238 0	1.5 to <2.0 %																					
238 8	2.0 to <5.0	4.11	4.92	4.63	10.7	2.89	6.01	4.64	19.2	3.81	4.8	4.45	10.7	3.4	4.61	3.89	20.0	22.01	54.79	40.72	6.6 %	
238 33	5.0 to <10	5.0	9.96	7.09	28.1	3.22	13.11	6.61	13.9	3.02	9.6	5.49	24.7	3.57	12.13	5.95	16.5	11.02	94.29	34.05	55.6 %	
238 174	10 to <15	10.11	14.94	11.99	24.8	4.21	22.67	9.88	34.2	2.94	14.64	7.8	20.2	3.28	15.35	8.07	19.4	10.78	124.47	45.71	42.1 %	
238 17	15 to <20	15.17	19.3	16.48	30.7	6.54	18.06	11.96	16.3	5.02	14.94	11.65	28.5	5.68	15.78	11.49	22.0	23.86	120.42	101.15	11.8 %	
238 4	20 to <25	20.19	24.47	22.85	5.2	6.46	11.28	9.36	15.7	4.41	9.22	6.85	5.2	4.9	11.0	8.12	9.3	17.05	47.72	29.77	6.1 %	
238 1	25 to <30	29.29	29.29	29.29	0.1	9.38	9.38	9.38	0.1	6.39	6.39	6.39	0.1	7.47	7.47	7.47	0.1	27.58	27.58	27.58	0.1 %	
238 1	30 to <99	35.78	35.78	35.78	0.1	18.15	18.15	18.15	0.1	14.89	14.89	14.89	0.1	18.02	18.02	18.02	0.1	84.67	84.67	84.67	0.1 %	
iimp=238, BA=BADU_P colour difference pairs %																						
ia	d_range	C00	LABmin	LABmax	LABmean	LABSTRESS	CMCmin	CMCmax	CMCmean	CMCSTRESS	C94min	C94max	C94mean	C94STRESS	C00min	C00max	C00mean	C00STRESS	C85min	C85max	C85mean	C85STRESS
238 238	0.0 to <99	4.11	35.78	11.74	30.6	2.89	22.67	9.42	32.4	2.94	14.94	7.65	20.1	3.28	18.02	7.92	19.2	10.78	124.47	47.7	39.6 %	
238 37	0.0 to <5.0	4.11	20.19	8.24	26.6	2.89	8.71	5.24	13.8	2.94	6.41	4.51	24.4	3.28	4.98	4.22	16.4	10.78	63.28	32.05	54.4 %	
238 0	0.0 to <0.5 %																					
238 0	0.5 to <1.0 %																					
238 0	1.0 to <1.5 %																					
238 0	1.5 to <2.0 %																					
238 37	2.0 to <5.0	4.11	20.19	8.24	26.6	2.89	8.71	5.24	13.8	2.94	6.41	4.51	24.4	3.28	4.98	4.22	16.4	10.78	63.28	32.05	54.4 %	
238 150	5.0 to <10	5.12	29.29	11.67	23.5	4.87	22.67	9.33	29.6	3.9	12.04	7.23	19.4	5.0	9.97	7.42	17.7	13.77	124.47	40.6	42.2 %	
238 47	10 to <15	9.83	24.38	13.99	25.8	8.56	18.09	12.39	13.6	7.51	14.64	10.89	24.0	10.02	14.68	11.73	15.9	23.56	120.42	78.62	55.5 %	
238 4	15 to <20	14.44	35.78	20.08	5.2	12.47	18.15	16.5	15.7	13.0	14.94	14.25	5.2	15.08	18.02	16.06	9.3	84.67	102.67	95.72	6.1 %	
238 0	20 to <25 %																					
238 0	25 to <30 %																					
238 0	30 to <99 %																					
iimp=238, BA=BADU_P colour difference pairs %																						
ia	d_range	C85	LABmin	LABmax	LABmean	LABSTRESS	CMCmin	CMCmax	CMCmean	CMCSTRESS	C94min	C94max	C94mean	C94STRESS	C00min	C00max	C00mean	C00STRESS	C85min	C85max	C85mean	C85STRESS
238 212	0.0 to <99	4.11	35.78	11.38	27.5	2.89	22.67	9.08	33.9	2.94	14.89	7.14	19.4	3.28	18.02	7.49	19.2	10.78	98.22	39.97	40.1 %	
238 0	0.0 to <5.0 %																					
238 0	0.0 to <0.5 %																					
238 0	0.5 to <1.0 %																					
238 0	1.0 to <1.5 %																					
238 0	1.5 to <2.0 %																					
238 0	2.0 to <5.0 %																					
238 0	5.0 to <10 %																					
238 12	10 to <15	5.12	12.64	8.36	19.1	4.21	7.77	5.83	17.9	2.94	5.32	3.92	19.1	3.28	7.18	4.77	21.5	10.78	14.67	12.83	8.6 %	
238 16	15 to <20	5.38	20.19	10.58	30.8	4.47	8.65	6.8	17.4	3.54	6.52	4.98	27.3	3.55	6.87	5.74	23.0	15.66	19.84	18.23	37.1 %	
238 41	20 to <25	4.7	17.39	11.15	26.1	4.29	12.15	8.19	13.0	3.52	8.83	6.0	23.3	3.92	12.13	6.79	15.3	20.01	24.96	22.98	54.1 %	
238 29	25 to <30	10.58	29.29	13.38	30.9	5.56	15.91	9.69	14.6	4.7	10.47	6.83	26.4	4.26	12.09	7.69	17.5	25.14	29.96	27.34	54.8 %	
238 114	30 to <99	4.11	35.78	11.39	20.8	2.89	22.67	9.91	27.8	4.11	14.89	8.26	18.5	3.4	18.02	8.21	17.6	30.27	98.22	55.21	41.7 %	

see similar files: http://130.149.60.45/~farbmetrik/VE93/VE93L0NA.TXT /.PS
technical information: http://www.ps.bam.de or http://130.149.60.45/~farbmetrik

TUB registration: 20140801-VE93/VE93L0NA.TXT /.PS
application for measurement of display or printer output, no separation
TUB material: code=rh4ta



Performance (STRESS values) for large colour difference data (LCD)

iimp=80, RL=RICHTER_L colour difference pairs %		LABmin,max,mean STRESS				CMCmin,max,mean STRESS				C94min,max,mean STRESS				C00min,max,mean STRESS				C85min,max,mean STRESS					
ia	d_range	LABmin	LABmax	LABmean	LABSTRESS	CMCmin	CMCmax	CMCmean	CMCSTRESS	C94min	C94max	C94mean	C94STRESS	C00min	C00max	C00mean	C00STRESS	C85min	C85max	C85mean	C85STRESS		
80	80	0.0	<99	1.38	36.6	11.11	47.4	1.04	51.53	7.57	66.5	1.35	34.83	6.49	56.2	1.34	22.9	6.19	53.8	7.4	129.45	36.33	52.8
80	13	0.0	<5.0	1.38	4.93	3.27	27.0	1.04	5.06	2.59	45.8	1.35	4.91	2.85	45.3	1.34	4.21	2.7	39.5	9.34	55.21	27.61	42.5
80	0	0.0	<0.5	%																			
80	0	0.5	<1.0	%																			
80	2	1.0	<1.5	1.38	1.39	1.38	10.6	1.04	1.11	1.07	4.1	1.35	1.38	1.37	4.0	1.34	1.36	1.35	4.7	12.74	13.71	13.22	7.5
80	0	1.5	<2.0	%																			
80	11	2.0	<5.0	2.31	4.93	3.62	32.3	1.74	5.06	2.86	46.7	1.55	4.91	3.12	46.0	1.64	4.21	2.95	42.9	9.34	55.21	30.23	47.1
80	27	5.0	<10	5.14	9.99	7.54	37.1	2.6	13.79	5.7	50.6	2.02	9.55	4.91	49.6	2.0	11.27	4.95	48.6	7.4	91.51	30.97	39.7
80	17	10	<15	10.1	14.05	11.63	33.1	4.56	14.92	8.59	42.9	3.47	11.3	6.97	40.7	3.85	13.18	7.41	36.3	12.23	105.28	38.52	38.7
80	16	15	<20	15.22	19.9	17.21	31.3	4.91	19.7	9.34	43.1	3.35	19.89	9.11	41.0	3.12	13.1	8.03	36.5	23.49	129.45	48.14	39.0
80	5	20	<25	20.07	24.29	21.37	36.7	6.43	13.24	9.2	45.0	4.43	11.58	7.23	42.8	4.87	9.75	7.18	45.8	18.0	52.43	30.61	33.7
80	1	25	<30	26.36	26.36	26.36	0.1	25.27	25.27	25.27	0.1	13.97	13.97	13.97	0.1	13.51	13.51	13.51	0.1	55.67	55.67	55.67	0.1
80	1	30	<99	36.6	36.6	36.6	0.1	51.53	51.53	51.53	0.1	34.83	34.83	34.83	0.1	22.9	22.9	22.9	0.1	77.35	77.35	77.35	0.1
iimp=80, RL=RICHTER_L colour difference pairs %																							
ia	d_range	C00	LABmin,max,mean	STRESS	CMCmin,max,mean	STRESS	C94min,max,mean	STRESS	C00min,max,mean	STRESS	C85min,max,mean	STRESS											
80	80	0.0	<99	1.38	36.6	11.11	47.4	1.04	51.53	7.57	66.5	1.35	34.83	6.49	56.2	1.34	22.9	6.19	53.8	7.4	129.45	36.33	52.8
80	34	0.0	<5.0	1.38	20.07	7.45	41.3	1.04	6.61	3.78	50.3	1.35	5.53	3.33	50.4	1.34	4.94	3.19	47.8	7.4	58.37	23.47	40.4
80	0	0.0	<0.5	%																			
80	0	0.5	<1.0	%																			
80	2	1.0	<1.5	1.38	1.39	1.38	10.6	1.04	1.11	1.07	4.1	1.35	1.38	1.37	4.0	1.34	1.36	1.35	4.7	12.74	13.71	13.22	7.5
80	2	1.5	<2.0	2.31	2.54	2.42	10.6	1.85	1.89	1.87	4.1	1.55	1.62	1.59	4.0	1.64	1.76	1.7	4.7	9.34	10.96	10.15	7.5
80	30	2.0	<5.0	2.51	20.07	8.19	40.0	1.74	6.61	4.09	51.7	2.02	5.53	3.57	51.9	2.0	4.94	3.41	49.1	7.4	58.37	25.04	41.3
80	33	5.0	<10	6.44	24.29	12.62	41.6	4.16	14.92	8.27	50.7	4.6	11.58	6.85	50.8	5.0	9.75	6.74	48.2	15.64	96.23	39.04	40.8
80	12	10	<15	9.99	26.36	15.23	29.4	7.8	25.27	12.72	47.8	7.54	19.89	12.09	47.6	10.28	13.51	11.81	42.9	23.57	129.45	61.9	46.1
80	0	15	<20	%																			
80	1	20	<25	36.6	36.6	36.6	0.1	51.53	51.53	51.53	0.1	34.83	34.83	34.83	0.1	22.9	22.9	22.9	0.1	77.35	77.35	77.35	0.1
80	0	25	<30	%																			
80	0	30	<99	%																			
iimp=80, RL=RICHTER_L colour difference pairs %																							
ia	d_range	C85	LABmin,max,mean	STRESS	CMCmin,max,mean	STRESS	C94min,max,mean	STRESS	C00min,max,mean	STRESS	C85min,max,mean	STRESS											
80	76	0.0	<99	1.38	36.6	10.81	47.9	1.04	51.53	7.47	66.8	1.35	34.83	5.94	56.4	1.34	22.9	5.94	53.8	7.4	96.23	31.97	51.5
80	0	0.0	<5.0	%																			
80	0	0.0	<0.5	%																			
80	0	0.5	<1.0	%																			
80	0	1.0	<1.5	%																			
80	0	1.5	<2.0	%																			
80	0	2.0	<5.0	%																			
80	4	5.0	<10	2.31	7.44	5.14	26.6	1.85	3.35	2.67	15.7	1.55	2.81	2.27	16.8	1.64	2.65	2.19	16.1	7.4	9.86	8.69	27.2
80	10	10	<15	1.38	13.64	7.09	36.8	1.04	5.45	3.28	44.0	1.35	4.77	2.86	41.0	1.34	4.24	2.69	40.4	10.96	14.99	13.1	46.1
80	10	15	<20	3.68	20.72	8.87	36.8	2.45	9.11	5.19	44.0	2.14	7.42	4.16	41.0	2.23	6.85	4.3	40.4	15.11	19.95	17.49	46.1
80	11	20	<25	2.51	21.64	12.36	32.3	1.74	9.46	6.89	46.7	2.51	7.88	5.49	46.0	2.25	12.13	6.09	42.9	20.31	24.74	22.88	47.1
80	7	25	<30	2.78	17.35	11.11	24.1	2.01	14.16	7.46	27.9	2.78	9.94	5.58	25.4	2.61	13.18	6.01	24.4	25.41	29.42	26.63	19.9
80	34	30	<99	3.74	36.6	12.57	41.3	2.83	51.53	10.13	50.3	3.47	34.83	8.02	50.4	3.66	22.9	7.75	47.8	30.31	96.23	48.56	40.4

see similar files: http://130.149.60.45/~farbmetrik/VE93/VE93.HTM
technical information: http://www.ps.bam.de or http://130.149.60.45/~farbmetrik

TUB registration: 20140801-VE93/VE93LONA.TXT /.PS
application for measurement of display or printer output, no separation
TUB material: code=rh4ta

Performance (STRESS values) for large colour difference data (LCD)

iimp=624, KL=KITTELMANN_L colour difference pairs %

ia	d_range	LABmin,max,mean	STRESS	CMCmin,max,mean	STRESS	C94min,max,mean	STRESS	C00min,max,mean	STRESS	C85min,max,mean	STRESS
624 624	0.0 to <99	1.91 43.77 21.21 25.0		1.46 59.86 17.04 43.1		1.89 43.77 15.48 33.1		1.89 34.08 14.25 28.8		13.94 387.09 118.63 66.5	
624 6	0.0 to <5.0	1.91 4.88 3.23 14.1		1.46 3.0 2.12 14.0		1.89 3.5 2.52 14.1		1.89 3.29 2.41 11.8		19.66 32.12 23.94 5.3	
624 0	0.0 to <0.5 %										
624 0	0.5 to <1.0 %										
624 0	1.0 to <1.5 %										
624 1	1.5 to <2.0	1.91 1.91 1.91 0.1		1.46 1.46 1.46 0.1		1.89 1.89 1.89 0.1		1.89 1.89 1.89 0.1		19.66 19.66 19.66 0.1	
624 5	2.0 to <5.0	2.02 4.88 3.49 14.1		1.55 3.0 2.25 14.0		2.0 3.5 2.64 14.1		2.0 3.29 2.52 12.1		20.88 32.12 24.79 5.3	
624 68	5.0 to <10	5.02 9.99 8.08 17.7		2.4 14.22 5.4 24.8		2.09 9.75 5.51 17.6		1.99 8.79 5.33 17.6		13.94 101.73 49.42 36.2	
624 112	10 to <15	10.0 14.93 12.74 16.1		4.88 21.09 9.64 20.3		4.13 14.13 8.95 15.9		4.27 13.45 8.73 16.8		26.45 159.44 73.7 32.8	
624 99	15 to <20	15.02 19.95 17.26 16.2		6.36 28.82 13.05 21.3		5.03 19.24 12.82 16.2		4.83 17.55 12.21 16.3		21.96 200.88 109.17 34.2	
624 102	20 to <25	20.06 24.99 23.01 16.2		8.68 34.92 19.1 21.0		8.06 24.49 17.29 16.1		7.61 22.5 15.87 16.3		34.67 241.56 131.82 33.8	
624 132	25 to <30	25.03 29.97 27.63 17.7		10.31 43.47 21.58 27.8		8.26 29.18 19.46 22.9		7.81 25.86 17.95 21.5		38.27 304.86 152.37 33.4	
624 105	30 to <99	30.0 43.77 33.68 16.3		13.73 59.86 29.36 20.8		11.88 43.77 25.42 16.2		11.42 34.08 22.31 16.5		41.86 387.09 170.84 33.6	

iimp=624, KL=KITTELMANN_L colour difference pairs %

ia	d_range	C00min,max,mean	STRESS	CMCmin,max,mean	STRESS	C94min,max,mean	STRESS	C00min,max,mean	STRESS	C85min,max,mean	STRESS
624 624	0.0 to <99	1.91 43.77 21.21 25.0		1.46 59.86 17.04 43.1		1.89 43.77 15.48 33.1		1.89 34.08 14.25 28.8		13.94 387.09 118.63 66.5	
624 42	0.0 to <5.0	1.91 15.72 8.18 20.6		1.46 8.65 4.28 30.6		1.89 5.68 3.89 20.4		1.89 4.95 3.68 18.1		13.94 54.25 31.21 37.4	
624 0	0.0 to <0.5 %										
624 0	0.5 to <1.0 %										
624 0	1.0 to <1.5 %										
624 2	1.5 to <2.0	1.91 6.39 4.15 16.2		1.46 2.62 2.04 16.2		1.89 2.09 1.99 16.2		1.89 1.99 1.94 17.3		13.94 19.66 16.8 7.5	
624 40	2.0 to <5.0	2.02 15.72 8.38 20.4		1.55 8.65 4.39 30.6		2.0 5.68 3.99 20.3		2.0 4.95 3.77 18.2		14.28 54.25 31.94 36.9	
624 140	5.0 to <10	5.68 29.88 12.74 17.9		4.17 21.35 8.34 29.0		4.83 11.77 7.65 23.6		5.02 9.92 7.4 21.9		20.69 120.96 61.82 33.2	
624 161	10 to <15	10.79 38.32 19.74 19.7		8.51 30.91 13.82 31.9		8.26 19.92 12.99 27.5		10.0 14.97 12.5 25.3		36.7 180.79 106.42 33.2	
624 142	15 to <20	15.95 41.13 25.73 18.2		13.0 43.47 20.57 29.6		11.88 28.92 18.54 24.2		15.02 19.86 17.34 22.4		50.5 285.33 143.61 33.3	
624 109	20 to <25	23.23 41.4 29.84 16.3		17.93 59.86 28.63 20.6		16.19 39.78 25.49 16.1		20.0 24.91 22.12 16.8		69.25 304.86 184.14 33.3	
624 27	25 to <30	29.87 40.1 33.36 15.0		22.65 43.62 34.02 29.7		20.04 37.5 30.32 14.8		25.12 29.55 26.73 17.2		78.67 387.09 214.44 33.1	
624 3	30 to <99	39.56 43.77 41.07 12.7		31.28 35.03 33.24 12.6		22.29 43.77 35.03 12.7		31.12 34.08 32.17 11.5		90.76 319.49 236.27 11.5	

iimp=624, KL=KITTELMANN_L colour difference pairs %

ia	d_range	C85min,max,mean	STRESS	CMCmin,max,mean	STRESS	C94min,max,mean	STRESS	C00min,max,mean	STRESS	C85min,max,mean	STRESS
624 273	0.0 to <99	1.91 41.4 16.6 22.3		1.46 59.86 11.94 37.7		1.89 39.78 9.81 31.4		1.89 31.12 9.65 26.6		13.94 97.73 59.18 34.9	
624 0	0.0 to <5.0 %										
624 0	0.0 to <0.5 %										
624 0	0.5 to <1.0 %										
624 0	1.0 to <1.5 %										
624 0	1.5 to <2.0 %										
624 0	2.0 to <5.0 %										
624 0	5.0 to <10 %										
624 2	10 to <15	6.39 8.58 7.49 16.2		2.62 3.77 3.2 16.2		2.09 3.06 2.57 16.2		1.99 3.05 2.52 17.3		13.94 14.28 14.11 7.5	
624 4	15 to <20	1.91 7.98 5.85 13.4		1.46 3.56 2.66 13.3		1.89 2.99 2.44 13.4		1.89 2.99 2.39 11.4		16.3 19.66 17.77 5.9	
624 11	20 to <25	2.02 15.16 6.44 15.6		1.55 6.98 3.6 33.8		2.0 5.72 3.43 15.6		2.0 5.64 3.3 17.6		20.21 24.77 21.87 39.4	
624 8	25 to <30	8.54 15.72 12.55 18.4		5.4 8.07 6.51 18.3		4.7 7.95 5.49 18.4		4.34 7.21 5.23 16.6		26.45 29.82 28.17 11.2	
624 248	30 to <99	4.66 41.4 17.43 22.0		3.0 59.86 12.71 36.9		3.02 39.78 10.41 31.0		2.92 31.12 10.25 26.9		30.65 97.73 62.86 34.0	

see similar files: http://130.149.60.45/~farbmetrik/VE93/VE93.HTM
technical information: http://www.ps.bam.de or http://130.149.60.45/~farbmetrik

TUB registration: 20140801-VE93/VE93L0NA.TXT /PS
application for measurement of display or printer output, no separation
TUB material: code=rh4ta