

see similar files: http://130.149.60.45/~farbmetrik/XE61/XE61LONA.TXT /PS
technical information: http://www.ps.bam.de or http://130.149.60.45/~farbmetrik

TUB registration: 20140801-XE61/XE61LONA.TXT /PS
application for measurement of display or printer output
TUB material: code=rh4ta

%Xn	Yn	Zn	X0	Y0	Z0	X1	Y1	Z1	DV*DV	ds*DV	dE*DV	dE*DVRdE	DVRdE*DVRdE	DVmdE*DVm	no.	L*0	a*0	b*0	C*0	h0	L*1	a*1	b*1	C*1	h1	CODE %	
%1000*(CIEXYZ & DV) for all colours (a) of experiment, %iimp=98, colour difference pairs VA_EW098=VIK_ADJACENT_EW, ioutn=0, iouts=0 %																											
0095050	0100000	0108900	0043074	0051427	0077399	0081895	0087159	0084892	0001098	00253	00253	0.999	0.434	0.0	0.566	61000001	77	-16	-18	24	227	95	-1	6	7	104	(CW-W) %
0095050	0100000	0108900	0043074	0051427	0077399	0019343	0027473	0069838	0001433	00253	00000	0.0	0.566	1.0	0.434	61000002	77	-16	-18	24	227	59	-30	-42	52	233	(CW-C) %
0095050	0100000	0108900	0030852	0028282	0046115	0081865	0087136	0084766	0001144	00253	00253	0.999	0.452	0.0	0.548	61000003	60	15	-18	24	309	95	-1	7	7	104	(VW-W) %
0095050	0100000	0108900	0030852	0028282	0046115	0007801	0005152	0022368	0001387	00253	00000	0.0	0.548	1.0	0.452	61000004	60	15	-18	24	309	27	31	-43	53	305	(VW-V) %
0095050	0100000	0108900	0053920	0042704	0046585	0081957	0087176	0085290	0001088	00253	00253	0.999	0.43	0.0	0.57	61000005	71	37	0	37	359	95	-1	6	6	104	(MW-W) %
0095050	0100000	0108900	0053920	0042704	0046585	0033139	0017030	0021987	0001443	00253	00000	0.0	0.57	1.0	0.43	61000006	71	37	0	37	359	48	74	-6	75	355	(MW-M) %
0095050	0100000	0108900	0052074	0043502	0024322	0082025	0087214	0085669	0001091	00253	00253	0.999	0.431	0.0	0.569	61000007	72	30	30	42	44	95	-1	6	6	104	(OW-W) %
0095050	0100000	0108900	0052074	0043502	0024322	0030662	0017102	0002671	0001440	00253	00000	0.0	0.569	1.0	0.431	61000008	72	30	30	42	44	48	65	52	84	38	(OW-O) %
0095050	0100000	0108900	0071925	0080693	0032042	0082017	0087277	0085077	0001200	00253	00253	0.999	0.474	0.0	0.525	61000009	92	-9	53	54	100	95	-1	6	7	104	(YW-W) %
0095050	0100000	0108900	0071925	0080693	0032042	0066664	0073806	0066995	0001331	00253	00000	0.0	0.525	1.0	0.474	61000010	92	-9	53	54	100	89	-7	100	100	94	(YW-Y) %
0095050	0100000	0108900	0032292	0044663	0029339	0081978	0087247	0084968	0001215	00253	00253	0.999	0.48	0.0	0.52	61000011	73	-33	23	40	144	95	-1	6	7	104	(LW-W) %
0095050	0100000	0108900	0032292	0044663	0029339	0009712	0020830	0006418	0001316	00253	00000	0.0	0.52	1.0	0.48	61000012	73	-33	23	40	144	53	-62	40	74	146	(LW-L) %
0095050	0100000	0108900	0008527	0010959	0021142	0019770	0027965	0070590	0001374	00253	00253	0.999	0.543	0.0	0.456	61000013	40	-15	-20	25	232	60	-30	-42	52	234	(CN-C) %
0095050	0100000	0108900	0008527	0010959	0021142	0002980	0003099	0003081	0001157	00253	00000	0.0	0.456	1.0	0.543	61000014	40	-15	-20	25	232	20	0	1	1	72	(CN-N) %
0095050	0100000	0108900	0005284	0004233	0010255	0008218	0005476	0023253	0001524	00253	00253	0.999	0.602	0.0	0.397	61000015	24	16	-21	26	307	28	31	-43	53	305	(VN-V) %
0095050	0100000	0108900	0005284	0004233	0010255	0003089	0003186	0003175	0001007	00253	00000	0.0	0.397	1.0	0.602	61000016	24	16	-21	26	307	21	1	1	2	60	(VN-N) %
0095050	0100000	0108900	0012276	0008036	0009325	0032537	0016547	0021197	0001304	00253	00253	0.999	0.515	0.0	0.484	61000017	34	36	-1	36	357	48	75	-6	75	355	(MN-M) %
0095050	0100000	0108900	0012276	0008036	0009325	0002842	0002946	0002963	0001228	00253	00000	0.0	0.484	1.0	0.515	61000018	34	36	-1	36	357	20	0	1	1	64	(MN-N) %
0095050	0100000	0108900	0011579	0007961	0002636	0030314	0016860	0002493	0001316	00253	00253	0.999	0.52	0.0	0.479	61000019	34	32	28	43	40	48	65	53	84	39	(ON-O) %
0095050	0100000	0108900	0011579	0007961	0002636	0002902	0003013	0002999	0001215	00253	00000	0.0	0.479	1.0	0.52	61000020	34	32	28	43	40	20	0	1	1	69	(ON-N) %
0095050	0100000	0108900	0020099	0022165	0004769	0066798	0074098	0007444	0001233	00253	00253	0.999	0.487	0.0	0.513	61000021	54	-4	50	50	95	89	-7	99	99	94	(YN-Y) %
0095050	0100000	0108900	0020099	0022165	0004769	0003033	0003118	0003076	0001298	00253	00000	0.0	0.513	1.0	0.487	61000022	54	-4	50	50	95	21	1	2	2	59	(YN-N) %
0095050	0100000	0108900	0005367	0008949	0004486	0010243	0021552	0006753	0001301	00253	00253	0.999	0.514	0.0	0.486	61000023	36	-31	20	37	147	54	-61	40	74	146	(LN-L) %
0095050	0100000	0108900	0005367	0008949	0004486	0003141	0003224	0003188	0001230	00253	00000	0.0	0.486	1.0	0.514	61000024	36	-31	20	37	147	21	1	2	2	56	(LN-N) %
0095050	0100000	0108900	0018978	0027010	0069411	0081903	0087166	0084901	0001141	00253	00253	0.999	0.451	0.0	0.548	61000025	59	-30	-42	52	234	95	-1	6	7	104	(C-W) %
0095050	0100000	0108900	0018978	0027010	0069411	0002714	0002829	0002886	0001390	00253	00000	0.0	0.548	1.0	0.451	61000026	59	-30	-42	52	234	19	0	1	1	70	(C-N) %
0095050	0100000	0108900	0007467	0004897	0021984	0081875	0087121	0084914	0001574	00253	00253	0.999	0.622	0.0	0.377	61000027	26	31	-44	54	305	95	-1	6	7	104	(V-W) %
0095050	0100000	0108900	0007467	0004897	0021984	0002736	0002851	0002907	0000957	00253	00000	0.0	0.377	1.0	0.622	61000028	26	31	-44	54	305	19	0	1	1	69	(V-N) %
0095050	0100000	0108900	0032650	0016676	0021392	0081940	0087190	0085037	0001157	00253	00253	0.999	0.457	0.0	0.543	61000029	48	74	-6	75	355	95	-1	6	7	104	(M-W) %
0095050	0100000	0108900	0032650	0016676	0021392	0002832	0002949	0003016	0001374	00253	00000	0.0	0.543	1.0	0.457	61000030	48	74	-6	75	355	20	0	1	1	67	(M-N) %
0095050	0100000	0108900	0030215	0016816	0002562	0081966	0087204	0085258	0001174	00253	00253	0.999	0.464	0.0	0.536	61000031	48	65	53	84	39	95	-1	6	6	104	(O-W) %
0095050	0100000	0108900	0030215	0016816	0002562	0002849	0002958	0003070	0001357	00253	00000	0.0	0.536	1.0	0.464	61000032	48	65	53	84	39	20	0	0	1	55	(O-N) %
0095050	0100000	0108900	0066737	0073834	0007177	0082007	0087317	0084700	0000876	00253	00253	0.999	0.346	0.0	0.654	61000033	89	-7	99	100	94	95	-1	7	7	104	(Y-W) %
0095050	0100000	0108900	0066737	0073834	0007177	0002672	0002786	0002857	0001656	00253	00000	0.0	0.654	1.0	0.346	61000034	89	-7	99	100	94	19	0	1	1	69	(Y-N) %
0095050	0100000	0108900	0009334	0020322	0006403	0081861	0087155	0084581	0001263	00253	00253	0.999	0.499	0.0	0.501	61000035	52	-63	39	74	147	95	-1	7	7	104	(L-W) %
0095050	0100000	0108900	0009334	0020322	0006403	0002711	0002826	0002883	0001268	00253	00000	0.0	0.501	1.0	0.499	61000036	52	-63	39	74	147	19	0	1	1	70	(L-N) %
0095050	0100000	0108900	0007648	0005037	0022249	0019131	0027146	0069686	0001281	00253	00253	0.999	0.506	0.0	0.493	61000037	27	31	-43	53	305	59	-30	-42	52	234	(V-C) %
0095050	0100000	0108900	0007648	0005037	0022249	0032775	0016792	0021389	0001250	00253	00000	0.0	0.493	1.0	0.506	61000038	27	31	-43	53	305	48	74	-5	74	355	(V-M) %
0095050	0100000	0108900	0030190	0016793	0002540	0032749	0016740	0021479	0000949	00253	00253	0.999	0.375	0.0	0.625	61000039	48	65	53	84	39	48	74	-6	75	355	(O-M) %
0095050	0100000	0108900	0030190	0016793	0002540	0066638	0073825	0007508	0001582	00253	00000	0.0	0.625	1.0	0.375	61000040	48	65	53	84	39	89	-7	98	99	94	(O-Y) %
0095050	0100000	0108900	0009237	0020192	0006398	0066640	0073753	0007320	0001309	00253	00253	0.999	0.517	0.0	0.482	61000041	52	-63	39	74	148	89	-7	99	99	94	(L-Y) %
0095050	0100000	0108900	0009237	0020192	0006398	0018964	0026976	0069349	0001223	00253	00000	0.0	0.482	1.0	0.517	61000042	52	-63	39	74	148	59	-30	-42	52	234	(L-C) %
0095050	0100000	0108900	0018934	0026937	0069287	0007531	0004955	0021877	0001309	00253	00253	0.999	0.517	0.0	0.482	61000043	59	-30	-42	52	234	27	31	-43	53	305	(

see similar files: http://130.149.60.45/~farbmetrik/XE61/XE61LONA.TXT /PS
technical information: http://www.ps.bam.de or http://130.149.60.45/~farbmetrik

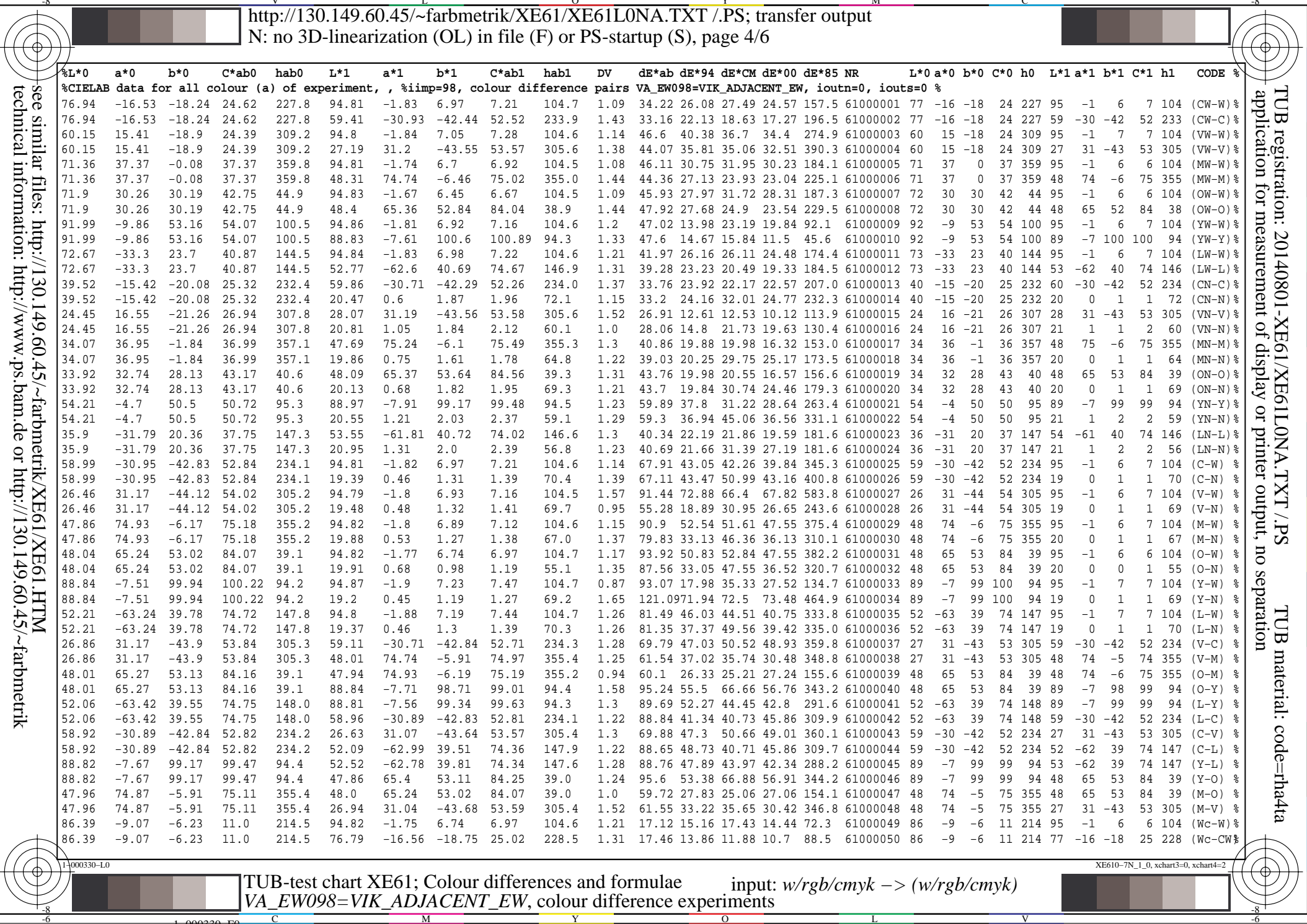
TUB registration: 20140801-XE61/XE61LONA.TXT /PS
application for measurement of display or printer output, no separation
TUB material: code=rh4ta

%Xn	Yn	Zn	X0	Y0	Z0	X1	Y1	Z1	DV*DV	ds*DV	de*DV	de*DVrdE	DVrdE	DVmdE	DVm no.	L*0	a*0	b*0	C*0	h0	L*1	a*1	b*1	C*1	h1	CODE %	
%1000*(CIEXYZ & DV) for all colours (a) of experiment, , %imp=98, colour difference pairs VA_EW098=VIK_ADJACENT_EW, ioutn=0, iouts=0 %																											
0095050	0100000	0108900	0053773	0053723	0066406	0081677	0086843	0085230	0001258	00253	00253	0.999	0.497	0.0	0.503	61000051	78	7	-7	9	315	95	-1	6	6	104	(Wv-W) %
0095050	0100000	0108900	0053773	0053723	0066406	0031007	0028449	0046980	0001273	00253	00000	0.0	0.503	1.0	0.496	61000052	78	7	-7	9	315	60	15	-19	24	308	(Wv-VW) %
0095050	0100000	0108900	0068553	0064010	0066228	0082016	0087216	0085531	0001245	00253	00253	0.999	0.492	0.0	0.508	61000053	84	17	2	17	9	95	-1	6	6	104	(Wm-W) %
0095050	0100000	0108900	0068553	0064010	0066228	0054225	0042964	0047363	0001286	00253	00000	0.0	0.508	1.0	0.491	61000054	84	17	2	17	9	95	-1	6	6	104	(Wm-MW) %
0095050	0100000	0108900	0064913	0061743	0048224	0081898	0087155	0084581	0001248	00253	00253	0.999	0.493	0.0	0.506	61000055	83	14	17	23	50	95	-1	7	7	104	(Wo-W) %
0095050	0100000	0108900	0064913	0061743	0048224	0051433	0042502	0023758	0001283	00253	00000	0.0	0.506	1.0	0.493	61000056	83	14	17	23	50	71	31	29	43	43	(Wo-OW) %
0095050	0100000	0108900	0075935	0083223	0055281	0081998	0087239	0085073	0000906	00253	00253	0.999	0.358	0.0	0.641	61000057	93	-6	28	29	102	95	-1	6	7	104	(Wy-W) %
0095050	0100000	0108900	0075935	0083223	0055281	0072081	0080771	0032956	0001625	00253	00000	0.0	0.641	1.0	0.358	61000058	93	-6	28	29	102	92	-9	51	52	100	(Wy-YW) %
0095050	0100000	0108900	0054957	0065264	0054935	0081892	0087084	0085314	0001245	00253	00253	0.999	0.492	0.0	0.508	61000059	85	-17	14	22	140	95	-1	6	6	104	(Wl-W) %
0095050	0100000	0108900	0054957	0065264	0054935	0032602	0044922	0030627	0001286	00253	00000	0.0	0.508	1.0	0.491	61000060	85	-17	14	22	140	73	-32	22	39	146	(Wl-LW) %
0095050	0100000	0108900	0030129	0038759	0074364	0042846	0051178	0077724	0000949	00253	00253	0.999	0.375	0.0	0.625	61000061	69	-23	-30	38	232	77	-16	-18	25	228	(Cw-CW) %
0095050	0100000	0108900	0030129	0038759	0074364	0019117	0027166	0069759	0001582	00253	00000	0.0	0.625	1.0	0.375	61000062	69	-23	-30	38	232	59	-30	-42	52	234	(Cw-C) %
0095050	0100000	0108900	0017140	0013979	0033873	0031007	0028449	0046980	0001063	00253	00253	0.999	0.42	0.0	0.58	61000063	44	22	-31	39	305	60	15	-19	24	308	(Vw-VW) %
0095050	0100000	0108900	0017140	0013979	0033873	0007724	0005099	0022445	0001468	00253	00000	0.0	0.42	1.0	0.42	61000064	44	22	-31	39	305	27	31	-43	53	305	(Vw-V) %
0095050	0100000	0108900	0043132	0028245	0033517	0054225	0042964	0047363	0001053	00253	00253	0.999	0.416	0.0	0.584	61000065	60	56	-3	56	356	72	37	0	37	359	(Mw-MW) %
0095050	0100000	0108900	0043132	0028245	0033517	0032941	0016859	0021835	0001478	00253	00000	0.0	0.584	1.0	0.416	61000066	60	56	-3	56	356	48	74	-6	75	354	(Mw-M) %
0095050	0100000	0108900	0039728	0027280	0009052	0051433	0042502	0023758	0001043	00253	00253	0.999	0.412	0.0	0.587	61000067	59	49	42	65	40	71	31	29	43	43	(Ow-OW) %
0095050	0100000	0108900	0039728	0027280	0009052	0030153	0016716	0002439	0001488	00253	00000	0.0	0.587	1.0	0.412	61000068	59	49	42	65	40	78	65	53	84	39	(Ow-O) %
0095050	0100000	0108900	0069109	0077892	0016272	0072081	0080771	0032956	0001205	00253	00253	0.999	0.476	0.0	0.524	61000069	91	-10	77	78	97	92	-9	51	52	100	(Yw-YW) %
0095050	0100000	0108900	0069109	0077892	0016272	0066785	0074005	0007581	0001326	00253	00000	0.0	0.524	1.0	0.476	61000070	91	-10	77	78	97	89	-7	98	98	94	(Yw-Y) %
0095050	0100000	0108900	0019612	0032347	0016223	0032602	0044922	0030627	0001086	00253	00253	0.999	0.429	0.0	0.571	61000071	64	-47	31	57	146	73	-32	22	39	146	(Lw-LW) %
0095050	0100000	0108900	0019612	0032347	0016223	0009866	0021113	0006738	0001445	00253	00000	0.0	0.571	1.0	0.429	61000072	64	-47	31	57	146	53	-62	39	74	147	(Lw-L) %
0095050	0100000	0108900	0012815	0017460	0040601	0019274	0027357	0069614	0001349	00253	00253	0.999	0.533	0.0	0.466	61000073	49	-23	-32	39	234	59	-30	-42	52	234	(Cn-C) %
0095050	0100000	0108900	0012815	0017460	0040601	0008051	0010396	0020660	0001182	00253	00000	0.0	0.466	1.0	0.533	61000074	49	-23	-32	39	234	39	-15	-20	25	233	(Cn-CN) %
0095050	0100000	0108900	0006167	0004418	0015597	0007633	0005004	0022145	0001273	00253	00253	0.999	0.503	0.0	0.496	61000075	25	24	-33	41	305	27	31	-43	53	305	(Vn-V) %
0095050	0100000	0108900	0006167	0004418	0015597	0004846	0003858	0009872	0001258	00253	00000	0.0	0.496	1.0	0.503	61000076	25	24	-33	41	305	23	16	-22	27	306	(Vn-VN) %
0095050	0100000	0108900	0020068	0011211	0014294	0032800	0016758	0021462	0001354	00253	00253	0.999	0.535	0.0	0.464	61000077	40	56	-5	56	354	48	75	-6	75	355	(Mn-M) %
0095050	0100000	0108900	0020068	0011211	0014294	0012454	0008161	0009708	0001177	00253	00000	0.0	0.464	1.0	0.535	61000078	40	56	-5	56	354	34	37	-2	37	356	(Mn-MN) %
0095050	0100000	0108900	0018784	0011347	0002510	0030131	0016704	0002461	0001352	00253	00253	0.999	0.534	0.0	0.465	61000079	40	49	39	63	39	48	65	53	84	39	(On-O) %
0095050	0100000	0108900	0018784	0011347	0002510	0011283	0007750	0002628	0001179	00253	00000	0.0	0.465	1.0	0.534	61000080	40	49	39	63	39	33	32	27	42	40	(On-ON) %
0095050	0100000	0108900	0039436	0044284	0006442	0066658	0073857	0007567	0001276	00253	00253	0.999	0.504	0.0	0.496	61000081	72	-8	74	74	96	89	-7	98	98	94	(Yn-Y) %
0095050	0100000	0108900	0039436	0044284	0006442	0019741	0021839	0004835	0001255	00253	00000	0.0	0.496	1.0	0.504	61000082	72	-8	74	74	96	54	-4	49	49	95	(Yn-YN) %
0095050	0100000	0108900	0007159	0013858	0005360	0009802	0021038	0006738	0001304	00253	00253	0.999	0.515	0.0	0.484	61000083	44	-47	30	56	147	53	-62	39	74	147	(Ln-L) %
0095050	0100000	0108900	0007159	0013858	0005360	0005090	0008604	0004498	0001228	00253	00000	0.0	0.484	1.0	0.515	61000084	44	-47	30	56	147	35	-32	19	37	149	(Ln-LN) %
0095050	0100000	0108900	0004691	0005674	0008904	0008051	0010396	0020660	0001248	00253	00253	0.999	0.493	0.0	0.506	61000085	29	-8	-9	13	228	39	-15	-20	25	233	(Nc-CN) %
0095050	0100000	0108900	0004691	0005674	0008904	0002732	0002842	0002934	0001283	00253	00000	0.0	0.506	1.0	0.493	61000086	29	-8	-9	13	228	19	0	1	1	61	(Nc-N) %
0095050	0100000	0108900	0003743	0003394	0005660	0004846	0003858	0009872	0001430	00253	00253	0.999	0.565	0.0	0.435	61000087	22	8	-9	12	309	23	16	-22	27	306	(Nv-VN) %
0095050	0100000	0108900	0003743	0003394	0005660	0002828	0002931	0002979	0001101	00253	00000	0.0	0.435	1.0	0.565	61000088	22	8	-9	12	309	20	0	1	1	61	(Nv-N) %
0095050	0100000	0108900	0006621	0005133	0005569	0012454	0008161	0009708	0001126	00253	00253	0.999	0.445	0.0	0.554	61000089	27	19	0	19	0	34	37	-2	37	356	(Nm-MN) %
0095050	0100000	0108900	0006621	0005133	0005569	0002956	0003059	0003075	0001405	00253	00000	0.0	0.554	1.0	0.445	61000090	27	19	0	19	0	20	0	1	1	62	(Nm-N) %
0095050	0100000	0108900	0006222	0004944	0002707	0011283	0007750	0002628	0001136	00253	00253	0.999	0.449	0.0	0.551	61000091	27	17	15	23	39	33	32	27	42	40	(No-ON) %
0095050	0100000	0108900	0006222	0004944	0002707	0002745	0002868	0002951	0001395	00253	00000	0.0	0.551	1.0	0.449	61000092	27	17	15	23	39	20	0	1	1	73	(No-N) %
0095050	0100000	0108900	0008996	0009737	0003907	0019741	0021839	0004835	0001060	00253	00253	0.999	0.419	0.0	0.581	61											

see similar files: http://130.149.60.45/~farbmetrik/XE61/XE61LONA.TXT /PS
technical information: http://www.ps.bam.de or http://130.149.60.45/~farbmetrik

Table with columns: %L*0, a*0, b*0, C*ab0, hab0, L*1, a*1, b*1, C*ab1, hab1, DV, dE*ab, dE*94, dE*CM, dE*00, dE*85, NR, L*0, a*0, b*0, C*0, h0, L*1, a*1, b*1, C*1, h1, CODE %

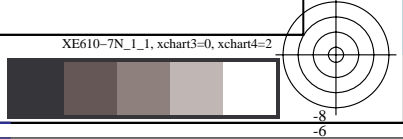
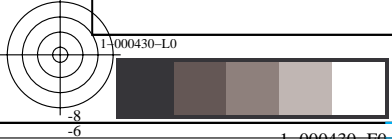
TUB registration: 20140801-XE61/XE61LONA.TXT /PS
application for measurement of display or printer output, no separation
TUB material: code=rh4ta



see similar files: http://130.149.60.45/~farbmetrik/XE61/XE61.HTM
technical information: http://www.ps.bam.de or http://130.149.60.45/~farbmetrik

TUB registration: 20140801-XE61/XE61L0NA.TXT /PS
application for measurement of display or printer output, no separation
TUB material: code=rh4ta

Table with columns: %L*0, a*0, b*0, C*ab0, hab0, L*1, a*1, b*1, C*ab1, hab1, DV, dE*ab, dE*94, dE*CM, dE*00, dE*85, NR, L*0, a*0, b*0, C*0, h0, L*1, a*1, b*1, C*1, h1, CODE %



```
%L*0 a*0 b*0 C*ab0 hab0 L*1 a*1 b*1 C*ab1 hab1 DV dE*ab dE*94 dE*CM dE*00 dE*85 NR L*0 a*0 b*0 C*0 h0 L*1 a*1 b*1 C*1 h1 CODE %  
%CIELAB data for all colour (a) of experiment, , %iimp=98, colour difference pairs VA_EW098=VIK_ADJACENT_EW, ioutn=0, iouts=0 %  
Minimum, maximum and average colour difference value  
STRESS constant F and STRESS value S  
iai+1 = 98, d_CIELABmina = 12.49, d_CIELABmaxa = 121.09, d_CIELABavea = 41.14  
iai+1 = 98, CIELAB_Fa = 32.2, CIELAB_STRESSa = 53.36  
  
iai+1 = 98, d_CIELCHmina = 12.49, d_CIELCHmaxa = 121.11, d_CIELCHavea = 41.15  
iai+1 = 98, CIELCHFa = 32.2, CIELCHSTRESSa = 53.36  
  
iai+1 = 98, d_C94LCHmina = 4.64, d_C94LCHmaxa = 72.88, d_C94LCHavea = 23.66  
iai+1 = 98, C94LCHFa = 18.68, C94LCHSTRESSa = 52.39  
  
iai+1 = 98, d_CMCLCHmina = 5.46, d_CMCLCHmaxa = 72.5, d_CMCLCHavea = 25.47  
iai+1 = 98, CMCLCHFa = 20.04, CMCLCHSTRESSa = 51.31  
  
iai+1 = 98, d_C00LCHmina = 4.1, d_C00LCHmaxa = 73.48, d_C00LCHavea = 22.81  
iai+1 = 98, C00LCHFa = 17.95, C00LCHSTRESSa = 53.08  
  
iai+1 = 98, d_C85LCHmina = 18.94, d_C85LCHmaxa = 583.86, d_C85LCHavea = 182.82  
iai+1 = 98, C85LCHFa = 144.7, C85LCHSTRESSa = 51.43
```

see similar files: <http://130.149.60.45/~farbmetrik/XE61/XE61L0NA.TXT> / .PS
technical information: <http://www.ps.bam.de> or <http://130.149.60.45/~farbmetrik>

TUB registration: 20140801-XE61/XE61L0NA.TXT /.PS TUB material: code=rh4ta
application for measurement of display or printer output, no separation

