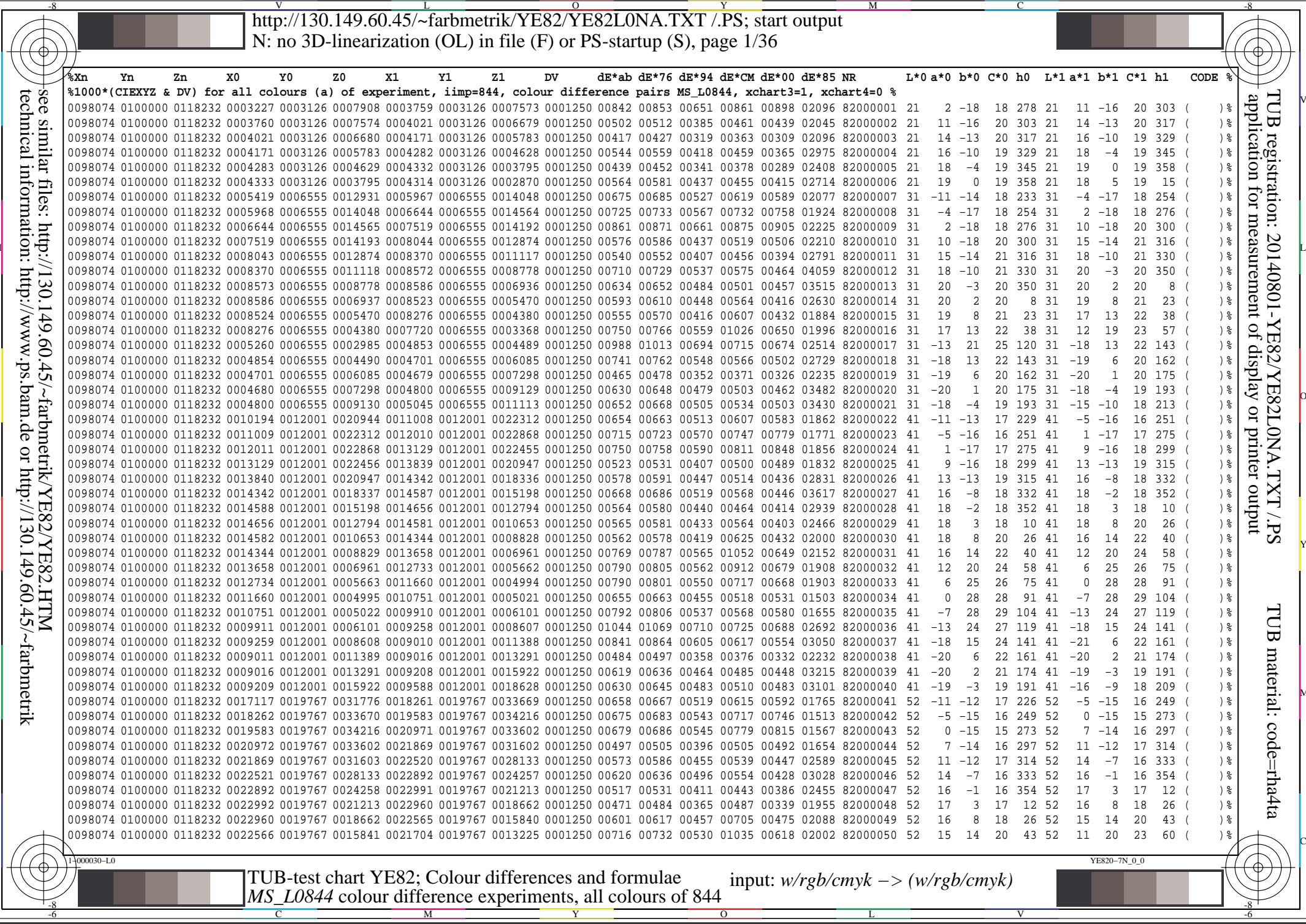


see similar files: http://130.149.60.45/~farbmetrik/YE82/YE82L0NA.TXT /.PS  
technical information: http://www.ps.bam.de or http://130.149.60.45/~farbmetrik

TUB registration: 20140801-YE82/YE82L0NA.TXT /.PS  
application for measurement of display or printer output  
TUB material: code=rh4ta

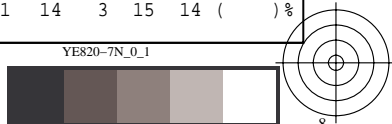
Table with columns: %Xn, Yn, Zn, X0, Y0, Z0, X1, Y1, Z1, DV, dE\*ab, dE\*76, dE\*94, dE\*CM, dE\*00, dE\*85, NR, L\*0, a\*0, b\*0, C\*0, h0, L\*1, a\*1, b\*1, C\*1, h1, CODE %



see similar files: http://130.149.60.45/~farbmetrik/YE82/YE82L0NA.TXT /.PS application for measurement of display or printer output, no separation technical information: http://www.ps.bam.de or http://130.149.60.45/~farbmetrik

Table with columns: %Xn, Yn, Zn, X0, Y0, Z0, X1, Y1, Z1, DV, dE\*ab, dE\*76, dE\*94, dE\*CM, dE\*00, dE\*85, NR, L\*0 a\*0 b\*0 C\*0 h0, L\*1 a\*1 b\*1 C\*1 h1, CODE %

TUB registration: 20140801-YE82/YE82L0NA.TXT /.PS application for measurement of display or printer output, no separation TUB material: code=rh4ta













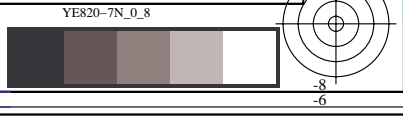
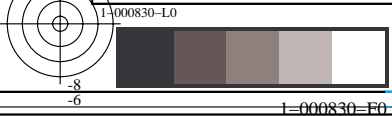




see similar files: http://130.149.60.45/~farbmetrik/YE82/YE82L0NA.TXT /.PS application for measurement of display or printer output, no separation

TUB registration: 20140801-YE82/YE82L0NA.TXT /.PS TUB material: code=rh4ta

Table with columns: %Xn, Yn, Zn, X0, Y0, Z0, X1, Y1, Z1, DV, dE\*ab, dE\*76, dE\*94, dE\*CM, dE\*00, dE\*85, NR, L\*0 a\*0 b\*0 C\*0 h0, L\*1 a\*1 b\*1 C\*1 h1, CODE %

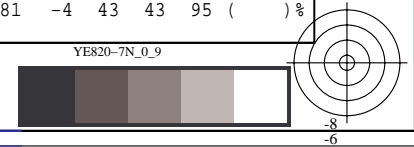
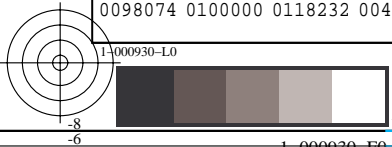


see similar files: http://130.149.60.45/~farbmetrik/YE82/YE82L0NA.TXT /PS  
technical information: http://www.ps.bam.de or http://130.149.60.45/~farbmetrik

Table with columns: %Xn, Yn, Zn, X0, Y0, Z0, X1, Y1, Z1, DV, dE\*ab, dE\*76, dE\*94, dE\*CM, dE\*00, dE\*85, NR, L\*0 a\*0 b\*0 C\*0 h0, L\*1 a\*1 b\*1 C\*1 h1, CODE %

TUB registration: 20140801-YE82/YE82L0NA.TXT /PS  
application for measurement of display or printer output, no separation

TUB material: code=rh4ta







http://130.149.60.45/~farbmetrik/YE82/YE82L0NA.TXT /.PS; transfer output

N: no 3D-linearization (OL) in file (F) or PS-startup (S), page 13/36

TUB registration: 20140801-YE82/YE82L0NA.TXT /.PS application for measurement of display or printer output, no separation TUB material: code=rh4ta

Table with columns: %Xn, Yn, Zn, X0, Y0, Z0, X1, Y1, Z1, DV, dE\*ab, dE\*76, dE\*94, dE\*CM, dE\*00, dE\*85, NR, L\*0, a\*0, b\*0, C\*0, h0, L\*1, a\*1, b\*1, C\*1, h1, CODE %

see similar files: http://130.149.60.45/~farbmetrik/YE82/YE82L0NA.TXT /.PS technical information: http://www.ps.bam.de or http://130.149.60.45/~farbmetrik

TUB-test chart YE82; Colour differences and formulae MS\_L0844 colour difference experiments, all colours of 844

input: w/rgb/cmyk -> (w/rgb/cmyk)

1-0001230-E0

YE820-7N\_0\_12





Table with columns: %Xn, Yn, Zn, X0, Y0, Z0, X1, Y1, Z1, DV, dE\*ab, dE\*76, dE\*94, dE\*CM, dE\*00, dE\*85, NR, L\*0, a\*0, b\*0, C\*0, h0, L\*1, a\*1, b\*1, C\*1, h1, CODE. The table contains 100 rows of data representing color measurements and differences.

see similar files: http://130.149.60.45/~farbmetrik/YE82/YE82L0NA.TXT /.PS application for measurement of display or printer output, no separation

TUB registration: 20140801-YE82/YE82L0NA.TXT /.PS TUB material: code=rh4ta





| %Xn   | Yn | Zn | X0 | Y0 | Z0 | X1 | Y1 | Z1 | DV | dE*ab | dE*76 | dE*94 | dE*CM | dE*00 | dE*85 | NR | L*0 a*0 | b*0 | C*0 | h0 | L*1 a*1 | b*1 | C*1 | h1 | CODE % |
|---|----|----|----|----|----|----|----|----|----|-------|-------|-------|-------|-------|-------|----|---------|-----|-----|----|---------|-----|-----|----|--------|
| %1000*(CIEXYZ & DV) for all colours (a) of experiment, iimp=844, colour difference pairs MS_L0844, xchart3=1, xchart4=0 % |    |    |    |    |    |    |    |    |    |       |       |       |       |       |       |    |         |     |     |    |         |     |     |    |        |
| Minimum, maximum and average colour difference value  |    |    |    |    |    |    |    |    |    |       |       |       |       |       |       |    |         |     |     |    |         |     |     |    |        |
| STRESS constant F and STRESS value S  |    |    |    |    |    |    |    |    |    |       |       |       |       |       |       |    |         |     |     |    |         |     |     |    |        |
| iai+1 = 844, d_CIELABmina = 4.17, d_CIELABmaxa = 22.59, d_CIELABavea = 10.05  |    |    |    |    |    |    |    |    |    |       |       |       |       |       |       |    |         |     |     |    |         |     |     |    |        |
| iai+1 = 844, CIELAB_Fa = 5.12, CIELAB_STRESSa = 17.22   |    |    |    |    |    |    |    |    |    |       |       |       |       |       |       |    |         |     |     |    |         |     |     |    |        |
| iai+1 = 844, d_CIELCHmina = 4.27, d_CIELCHmaxa = 23.12, d_CIELCHavea = 10.18  |    |    |    |    |    |    |    |    |    |       |       |       |       |       |       |    |         |     |     |    |         |     |     |    |        |
| iai+1 = 844, CIELCHFa = 5.18, CIELCHSTRESSa = 17.46   |    |    |    |    |    |    |    |    |    |       |       |       |       |       |       |    |         |     |     |    |         |     |     |    |        |
| iai+1 = 844, d_C94LCHmina = 2.71, d_C94LCHmaxa = 12.3, d_C94LCHavea = 7.35  |    |    |    |    |    |    |    |    |    |       |       |       |       |       |       |    |         |     |     |    |         |     |     |    |        |
| iai+1 = 844, C94LCHFa = 3.7, C94LCHSTRESSa = 31.36  |    |    |    |    |    |    |    |    |    |       |       |       |       |       |       |    |         |     |     |    |         |     |     |    |        |
| iai+1 = 844, d_CMCLCHmina = 3.2, d_CMCLCHmaxa = 17.61, d_CMCLCHavea = 7.61  |    |    |    |    |    |    |    |    |    |       |       |       |       |       |       |    |         |     |     |    |         |     |     |    |        |
| iai+1 = 844, CMCLCHFa = 3.83, CMCLCHSTRESSa = 32.27   |    |    |    |    |    |    |    |    |    |       |       |       |       |       |       |    |         |     |     |    |         |     |     |    |        |
| iai+1 = 844, d_C00LCHmina = 1.97, d_C00LCHmaxa = 15.3, d_C00LCHavea = 6.83  |    |    |    |    |    |    |    |    |    |       |       |       |       |       |       |    |         |     |     |    |         |     |     |    |        |
| iai+1 = 844, C00LCHFa = 3.44, C00LCHSTRESSa = 29.91   |    |    |    |    |    |    |    |    |    |       |       |       |       |       |       |    |         |     |     |    |         |     |     |    |        |
| iai+1 = 844, d_C85LCHmina = 7.57, d_C85LCHmaxa = 128.5, d_C85LCHavea = 54.17  |    |    |    |    |    |    |    |    |    |       |       |       |       |       |       |    |         |     |     |    |         |     |     |    |        |
| iai+1 = 844, C85LCHFa = 27.45, C85LCHSTRESSa = 54.86  |    |    |    |    |    |    |    |    |    |       |       |       |       |       |       |    |         |     |     |    |         |     |     |    |        |

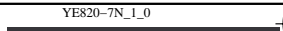
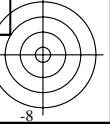
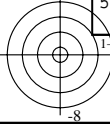
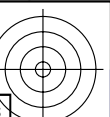
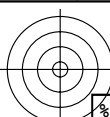
see similar files: <http://130.149.60.45/~farbmetrik/YE82/YE82L0NA.TXT> / .PS  
technical information: <http://www.ps.bam.de> or <http://130.149.60.45/~farbmetrik>

TUB registration: 20140801-YE82/YE82L0NA.TXT /.PS TUB material: code=rh4ta  
application for measurement of display or printer output, no separation

Table with columns: %L\*0, a\*0, b\*0, C\*ab0, hab0, L\*1, a\*1, b\*1, C\*ab1, hab1, DV, dE\*ab, dE\*94, dE\*CM, dE\*00, dE\*85, NR, L\*0, a\*0, b\*0, C\*0, h0, L\*1, a\*1, b\*1, C\*1, h1, CODE %

see similar files: http://130.149.60.45/~farbmetrik/YE82/YE82L0NA.TXT /PS application for measurement of display or printer output, no separation

TUB registration: 20140801-YE82/YE82L0NA.TXT /PS TUB material: code=rh4ta

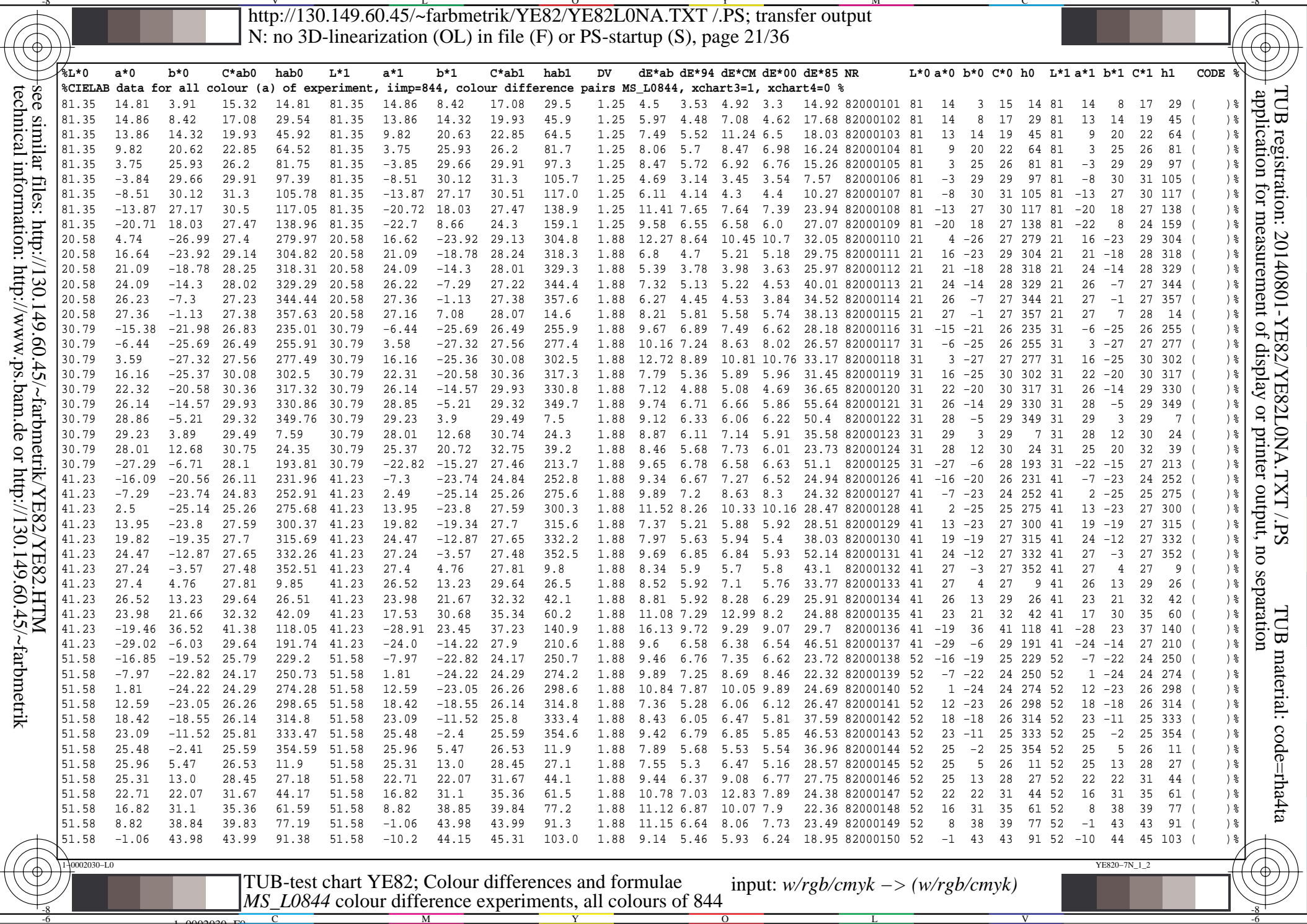




see similar files: http://130.149.60.45/~farbmetrik/YE82/YE82L0NA.TXT /PS application for measurement of display or printer output, no separation

Table with columns: %L\*0, a\*0, b\*0, C\*ab0, hab0, L\*1, a\*1, b\*1, C\*ab1, hab1, DV, dE\*ab, dE\*94, dE\*CM, dE\*00, dE\*85, NR, L\*0, a\*0, b\*0, C\*0, h0, L\*1, a\*1, b\*1, C\*1, h1, CODE %

TUB registration: 20140801-YE82/YE82L0NA.TXT /PS application for measurement of display or printer output, no separation TUB material: code=rh4ta

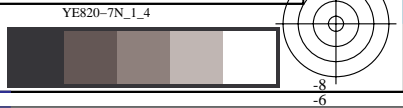
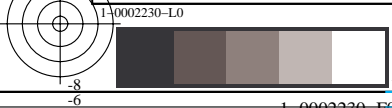




see similar files: http://130.149.60.45/~farbmetrik/YE82/YE82L0NA.TXT /PS application for measurement of display or printer output, no separation technical information: http://www.ps.bam.de or http://130.149.60.45/~farbmetrik

TUB registration: 20140801-YE82/YE82L0NA.TXT /PS TUB material: code=rh4ta

Table with columns: %L\*0, a\*0, b\*0, C\*ab0, hab0, L\*1, a\*1, b\*1, C\*ab1, hab1, DV, dE\*ab, dE\*94, dE\*CM, dE\*00, dE\*85, NR, L\*0, a\*0, b\*0, C\*0, h0, L\*1, a\*1, b\*1, C\*1, h1, CODE %



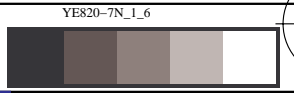
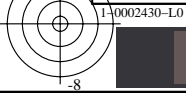




see similar files: http://130.149.60.45/~farbmetrik/YE82/YE82L0NA.TXT /PS application for measurement of display or printer output, no separation

Table with columns: %L\*0, a\*0, b\*0, C\*ab0, hab0, L\*1, a\*1, b\*1, C\*ab1, hab1, DV, dE\*ab, dE\*94, dE\*CM, dE\*00, dE\*85, NR, L\*0, a\*0, b\*0, C\*0, h0, L\*1, a\*1, b\*1, C\*1, h1, CODE %. Rows contain numerical data for color differences and measurements.

TUB registration: 20140801-YE82/YE82L0NA.TXT /.PS TUB material: code=rh4ta



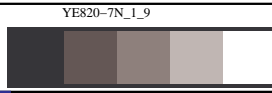
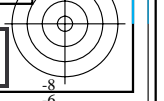
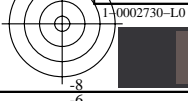




see similar files: http://130.149.60.45/~farbmetrik/YE82/YE82.HTM  
technical information: http://www.ps.bam.de or http://130.149.60.45/~farbmetrik

Table with columns: %L\*0, a\*0, b\*0, C\*ab0, hab0, L\*1, a\*1, b\*1, C\*ab1, hab1, DV, dE\*ab, dE\*94, dE\*CM, dE\*00, dE\*85, NR, L\*0 a\*0, b\*0, C\*0, h0, L\*1 a\*1, b\*1, C\*1, h1, CODE %. Rows contain numerical data for color difference experiments.

TUB registration: 20140801-YE82/YE82L0NA.TXT /PS  
application for measurement of display or printer output, no separation  
TUB material: code=rh4ta













see similar files: http://130.149.60.45/~farbmetrik/YE82/YE82L0NA.TXT /PS application for measurement of display or printer output, no separation technical information: http://www.ps.bam.de or http://130.149.60.45/~farbmetrik

TUB registration: 20140801-YE82/YE82L0NA.TXT /PS TUB material: code=rh4ta

Table with columns: %L\*0, a\*0, b\*0, C\*ab0, hab0, L\*1, a\*1, b\*1, C\*ab1, hab1, DV, dE\*ab, dE\*94, dE\*CM, dE\*00, dE\*85, NR, L\*0, a\*0, b\*0, C\*0, h0, L\*1, a\*1, b\*1, C\*1, h1, CODE %

http://130.149.60.45/~farbmetrik/YE82/YE82L0NA.TXT /.PS; transfer output

N: no 3D-linearization (OL) in file (F) or PS-startup (S), page 34/36

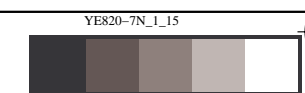
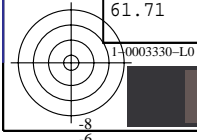
Table with 22 columns: %L\*0, a\*0, b\*0, C\*ab0, hab0, L\*1, a\*1, b\*1, C\*ab1, hab1, DV, dE\*ab, dE\*94, dE\*CM, dE\*00, dE\*85, NR, L\*0, a\*0, b\*0, C\*0, h0, L\*1, a\*1, b\*1, C\*1, h1, CODE %. The table contains 24 rows of experimental data for various colors.

see similar files: http://130.149.60.45/~farbmetrik/YE82/YE82L0NA.TXT /PS  
technical information: http://www.ps.bam.de or http://130.149.60.45/~farbmetrik

TUB registration: 20140801-YE82/YE82L0NA.TXT /.PS  
application for measurement of display or printer output, no separation  
TUB material: code=rha4ta

TUB-test chart YE82; Colour differences and formulae  
MS\_L0844 colour difference experiments, all colours of 844

input: w/rgb/cmyk -> (w/rgb/cmyk)





```
%L*0 a*0 b*0 C*ab0 hab0 L*1 a*1 b*1 C*ab1 hab1 DV dE*ab dE*94 dE*CM dE*00 dE*85 NR L*0 a*0 b*0 C*0 h0 L*1 a*1 b*1 C*1 h1 CODE %  
%CIELAB data for all colour (a) of experiment, iimp=844, colour difference pairs MS_L0844, xchart3=1, xchart4=0 %  
Minimum, maximum and average colour difference value  
STRESS constant F and STRESS value S  
iai+1 = 844, d_CIELABmina = 4.17, d_CIELABmaxa = 22.59, d_CIELABavea = 10.05  
iai+1 = 844, CIELAB_Fa = 5.12, CIELAB_STRESSa = 17.22  
  
iai+1 = 844, d_CIELCHmina = 4.27, d_CIELCHmaxa = 23.12, d_CIELCHavea = 10.18  
iai+1 = 844, CIELCHFa = 5.18, CIELCHSTRESSa = 17.46  
  
iai+1 = 844, d_C94LCHmina = 2.71, d_C94LCHmaxa = 12.3, d_C94LCHavea = 7.35  
iai+1 = 844, C94LCHFa = 3.7, C94LCHSTRESSa = 31.36  
  
iai+1 = 844, d_CMCLCHmina = 3.2, d_CMCLCHmaxa = 17.61, d_CMCLCHavea = 7.61  
iai+1 = 844, CMCLCHFa = 3.83, CMCLCHSTRESSa = 32.27  
  
iai+1 = 844, d_C00LCHmina = 1.97, d_C00LCHmaxa = 15.3, d_C00LCHavea = 6.83  
iai+1 = 844, C00LCHFa = 3.44, C00LCHSTRESSa = 29.91  
  
iai+1 = 844, d_C85LCHmina = 7.57, d_C85LCHmaxa = 128.5, d_C85LCHavea = 54.17  
iai+1 = 844, C85LCHFa = 27.45, C85LCHSTRESSa = 54.86
```

see similar files: <http://130.149.60.45/~farbmetrik/YE82/YE82L0NA.TXT> / .PS  
technical information: <http://www.ps.bam.de> or <http://130.149.60.45/~farbmetrik>

TUB registration: 20140801-YE82/YE82L0NA.TXT /.PS TUB material: code=rh4ta  
application for measurement of display or printer output, no separation