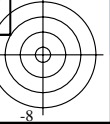
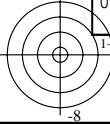
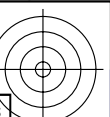
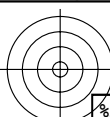


see similar files: http://130.149.60.45/~farbmetrik/YE90/YE90.HTM  
technical information: http://www.ps.bam.de or http://130.149.60.45/~farbmetrik

TUB registration: 20140801-YE90/YE90LONA.TXT /PS  
application for measurement of display or printer output

TUB material: code=rh4ta

Table with columns: %Xn, Yn, Zn, X0, Y0, Z0, X1, Y1, Z1, DV, dE\*ab, dE\*76, dE\*94, dE\*CM, dE\*00, dE\*85, NR, L\*0, a\*0, b\*0, C\*0, h0, L\*1, a\*1, b\*1, C\*1, h1, CODE %

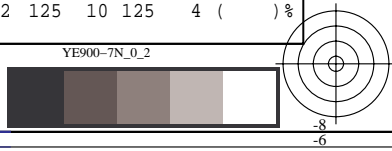
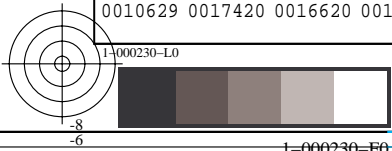




TUB registration: 20140801-YE90/YE90LONA.TXT /PS application for measurement of display or printer output, no separation TUB material: code=rh4ta

Table with columns: %Xn, Yn, Zn, X0, Y0, Z0, X1, Y1, Z1, DV, dE\*ab, dE\*76, dE\*94, dE\*CM, dE\*00, dE\*85, NR, L\*0, a\*0, b\*0, C\*0, h0, L\*1, a\*1, b\*1, C\*1, h1, CODE. It contains numerical data for color calibration.

see similar files: http://130.149.60.45/~farbmetrik/YE90/YE90.HTM technical information: http://www.ps.bam.de or http://130.149.60.45/~farbmetrik

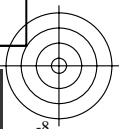
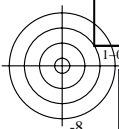




%Xn	Yn	Zn	X0	Y0	Z0	X1	Y1	Z1	DV	dE*ab	dE*76	dE*94	dE*CM	dE*00	dE*85	NR	L*0	a*0	b*0	C*0	h0	L*1	a*1	b*1	C*1	h1	CODE %
%1000*(CIEXYZ & DV) for all colours (a) of experiment, iimp=192, colour difference pairs RS_ER192, xchart3=1, xchart4=0 %																											
Minimum, maximum and average colour difference value																											
STRESS constant F and STRESS value S																											
iai+1 = 192, d_CIELABmin = 4.37, d_CIELABmax = 12585.9, d_CIELABave = 3885.84																											
iai+1 = 192, CIELAB_Fa = 0.0, CIELAB_STRESSa = 99.99																											
iai+1 = 192, d_CIELCHmin = 4.33, d_CIELCHmax = 5691.16, d_CIELCHave = 2339.53																											
iai+1 = 192, CIELCHFa = 0.0, CIELCHSTRESSa = 99.99																											
iai+1 = 192, d_C94LCHmin = 0.5, d_C94LCHmax = 8684.13, d_C94LCHave = 935.66																											
iai+1 = 192, C94LCHFa = 0.0, C94LCHSTRESSa = 99.99																											
iai+1 = 192, d_CMCLCHmin = 1.11, d_CMCLCHmax = 2550.4, d_CMCLCHave = 775.47																											
iai+1 = 192, CMCLCHFa = 0.0, CMCLCHSTRESSa = 99.99																											
iai+1 = 192, d_C00LCHmin = 0.5, d_C00LCHmax = 139.47, d_C00LCHave = 55.93																											
iai+1 = 192, C00LCHFa = 0.0, C00LCHSTRESSa = 99.08																											
iai+1 = 192, d_C85LCHmin = 2.83, d_C85LCHmax = 1175.92, d_C85LCHave = 455.39																											
iai+1 = 192, C85LCHFa = 0.0, C85LCHSTRESSa = 99.63																											

see similar files: <http://130.149.60.45/~farbmetrik/YE90/YE90L0NA.TXT> /PS  
technical information: <http://www.ps.bam.de> or <http://130.149.60.45/~farbmetrik>

TUB registration: 20140801-YE90/YE90L0NA.TXT /.PS TUB material: code=rh4ta  
application for measurement of display or printer output, no separation



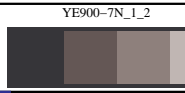
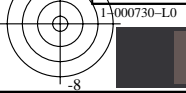




see similar files: http://130.149.60.45/~farbmetrik/YE90/YE90.HTM  
technical information: http://www.ps.bam.de or http://130.149.60.45/~farbmetrik

Table with columns: %L\*0, a\*0, b\*0, C\*ab0, hab0, L\*1, a\*1, b\*1, C\*ab1, hab1, DV, dE\*ab, dE\*94, dE\*CM, dE\*00, dE\*85, NR, L\*0, a\*0, b\*0, C\*0, h0, L\*1, a\*1, b\*1, C\*1, h1, CODE %

TUB registration: 20140801-YE90/YE90LONA.TXT /PS  
application for measurement of display or printer output, no separation  
TUB material: code=rh4ta







```
%L*0 a*0 b*0 C*ab0 hab0 L*1 a*1 b*1 C*ab1 hab1 DV dE*ab dE*94 dE*CM dE*00 dE*85 NR L*0 a*0 b*0 C*0 h0 L*1 a*1 b*1 C*1 h1 CODE %  
%CIELAB data for all colour (a) of experiment, iimp=192, colour difference pairs RS_ER192, xchart3=1, xchart4=0 %  
Minimum, maximum and average colour difference value  
STRESS constant F and STRESS value S  
iai+1 = 192, d_CIELABmina = 4.37, d_CIELABmaxa = 12585.9, d_CIELABavea = 3885.84  
iai+1 = 192, CIELAB_Fa = 0.0, CIELAB_STRESSa = 99.99  
  
iai+1 = 192, d_CIELCHmina = 4.33, d_CIELCHmaxa = 5691.16, d_CIELCHavea = 2339.53  
iai+1 = 192, CIELCHFa = 0.0, CIELCHSTRESSa = 99.99  
  
iai+1 = 192, d_C94LCHmina = 0.5, d_C94LCHmaxa = 8684.13, d_C94LCHavea = 935.66  
iai+1 = 192, C94LCHFa = 0.0, C94LCHSTRESSa = 99.99  
  
iai+1 = 192, d_CMCLCHmina = 1.11, d_CMCLCHmaxa = 2550.4, d_CMCLCHavea = 775.47  
iai+1 = 192, CMCLCHFa = 0.0, CMCLCHSTRESSa = 99.99  
  
iai+1 = 192, d_C00LCHmina = 0.5, d_C00LCHmaxa = 139.47, d_C00LCHavea = 55.93  
iai+1 = 192, C00LCHFa = 0.0, C00LCHSTRESSa = 99.08  
  
iai+1 = 192, d_C85LCHmina = 2.83, d_C85LCHmaxa = 1175.92, d_C85LCHavea = 455.39  
iai+1 = 192, C85LCHFa = 0.0, C85LCHSTRESSa = 99.63
```

see similar files: <http://130.149.60.45/~farbmetrik/YE90/YE90.HTM>  
technical information: <http://www.ps.bam.de> or <http://130.149.60.45/~farbmetrik>

TUB registration: 20140801-YE90/YE90L0NA.TXT /.PS TUB material: code=rh4ta  
application for measurement of display or printer output, no separation

