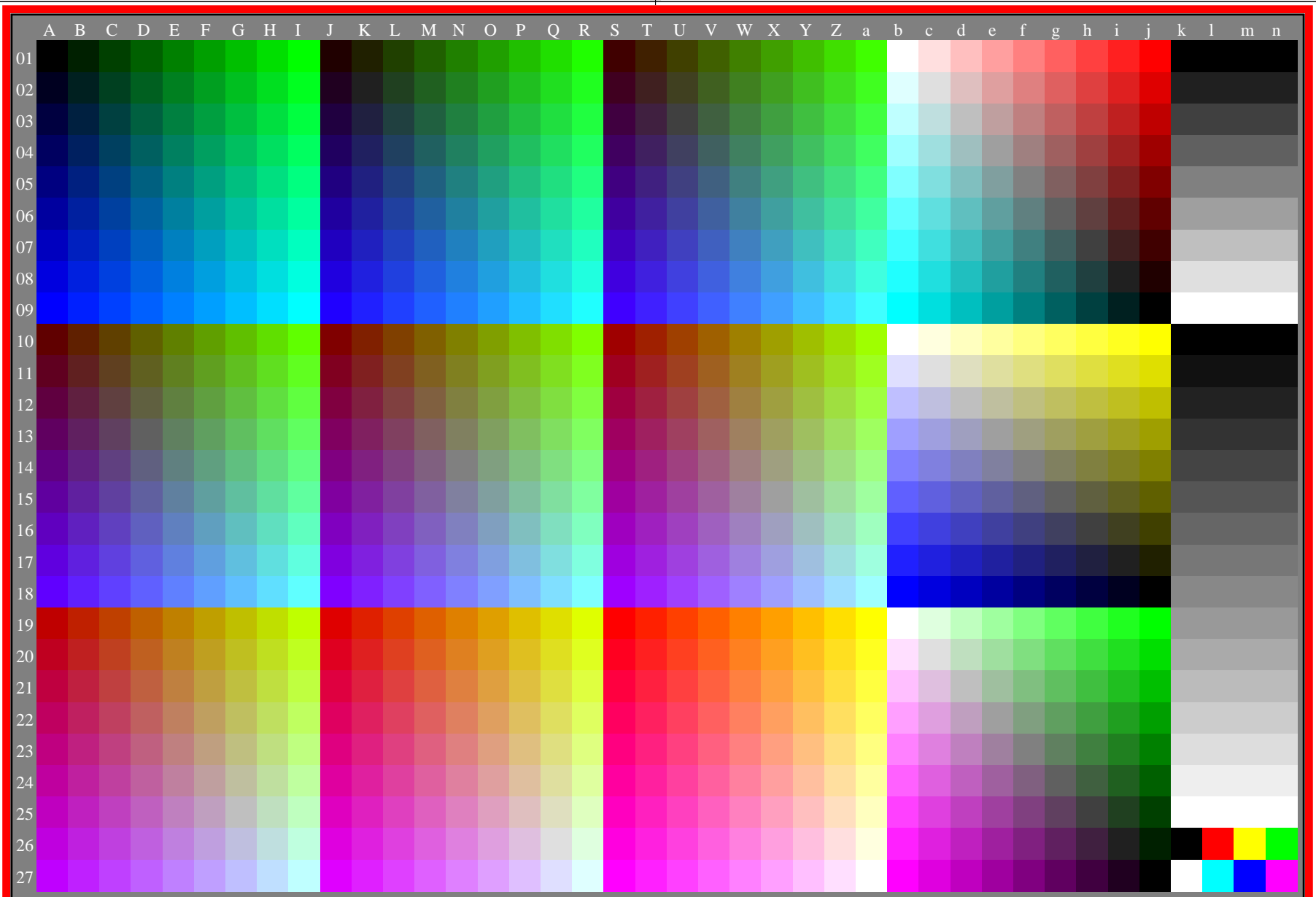


<http://farbe.li.tu-berlin.de/eei5/eei510na.txt> / .ps; only vector graphic VG; start output
see separate images of this page: <http://farbe.li.tu-berlin.de/eei5/eei5.htm>

see similar files of the whole serie: <http://farbe.li.tu-berlin.de/eei5.htm>
technical information: <http://farbe.li.tu-berlin.de> or <http://color.li.tu-berlin.de>

TUB registration: 20230701-eei5/eei510na.txt / .ps
application for evaluation and measurement of display or print output
TUB material: code=rh4ta



eei50-8a, gamma $g_a=2,400$, $g_p=1,000$, $C_{YP8}=C_{YN8}$

eei50-7n, AEW60-7N

TUB-test chart eei5; Test charts with 9 step colour series for ergonomic linearized display output
Gamma optimization for 15 ambient display reflections according to ISO 9241-306; $\gamma_{rel}=1,000$ (right)