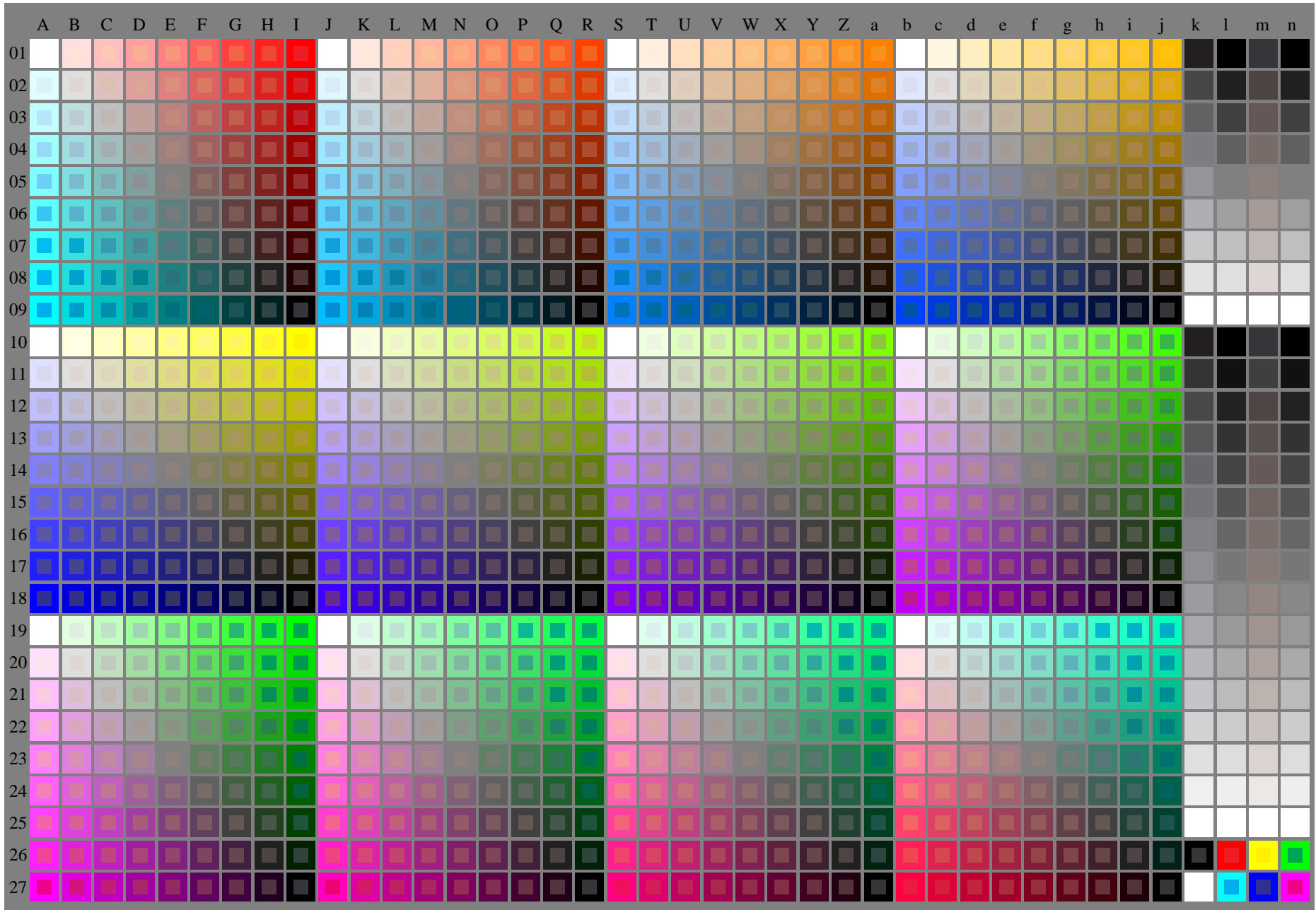


see similar files of the whole serie: <http://farbe.li.tu-berlin.de/fevs.htm>  
technical information: <http://farbe.li.tu-berlin.de> or <http://color.li.tu-berlin.de>

TUB registration: 20240201-fev5/fev510np.pdf /.ps  
application for evaluation and measurement of display or print output  
TUB material: code=rh4ta



fev50-7n, 1/3, Test chart O with 40x27=1080 colours; digital equidistant 9 or 16 step colour scales; Colour data in column (A-n):  $rgb + cmy0 (A_j + k26\_n27), 000n (k), w (l), nnn0 (m), www (n), colorm = 0, separation = A$   
 TUB-test chart fev5; Colorimetric system O  
 40x27=1080 colours for output or measurement:  
 input:  $(rgb/000n/w/nnn0/www)_d \rightarrow rgb*_d$   
 output: no change compared to input