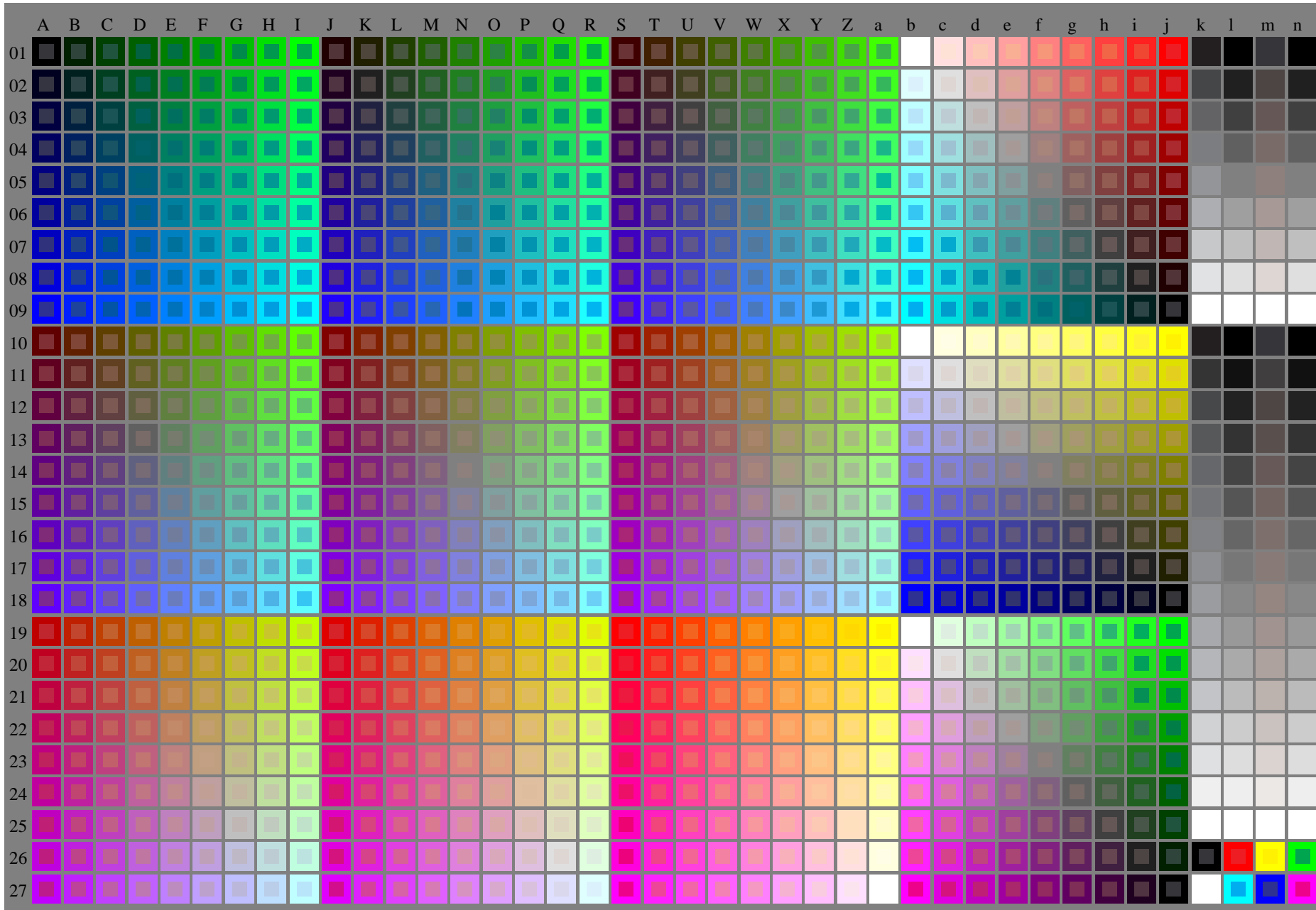


see similar files of the whole serie: <http://farbe.li.tu-berlin.de/fevs.htm>  
technical information: <http://farbe.li.tu-berlin.de> or <http://color.li.tu-berlin.de>

TUB registration: 20240201-fev6/fev610na.txt / .ps  
application for evaluation and measurement of display or print output

TUB material: code=rh4ta



fev60-7n, 1/5, Test chart G with 40x27=1080 colours; digital equidistant 9 or 16 step colour scales; Colour data in column (A-n):  $rgb + cmy0 (A_j + k26\_n27), 000n (k), w (l), nnn0 (m), www (n), colorm = 0, separation = A$

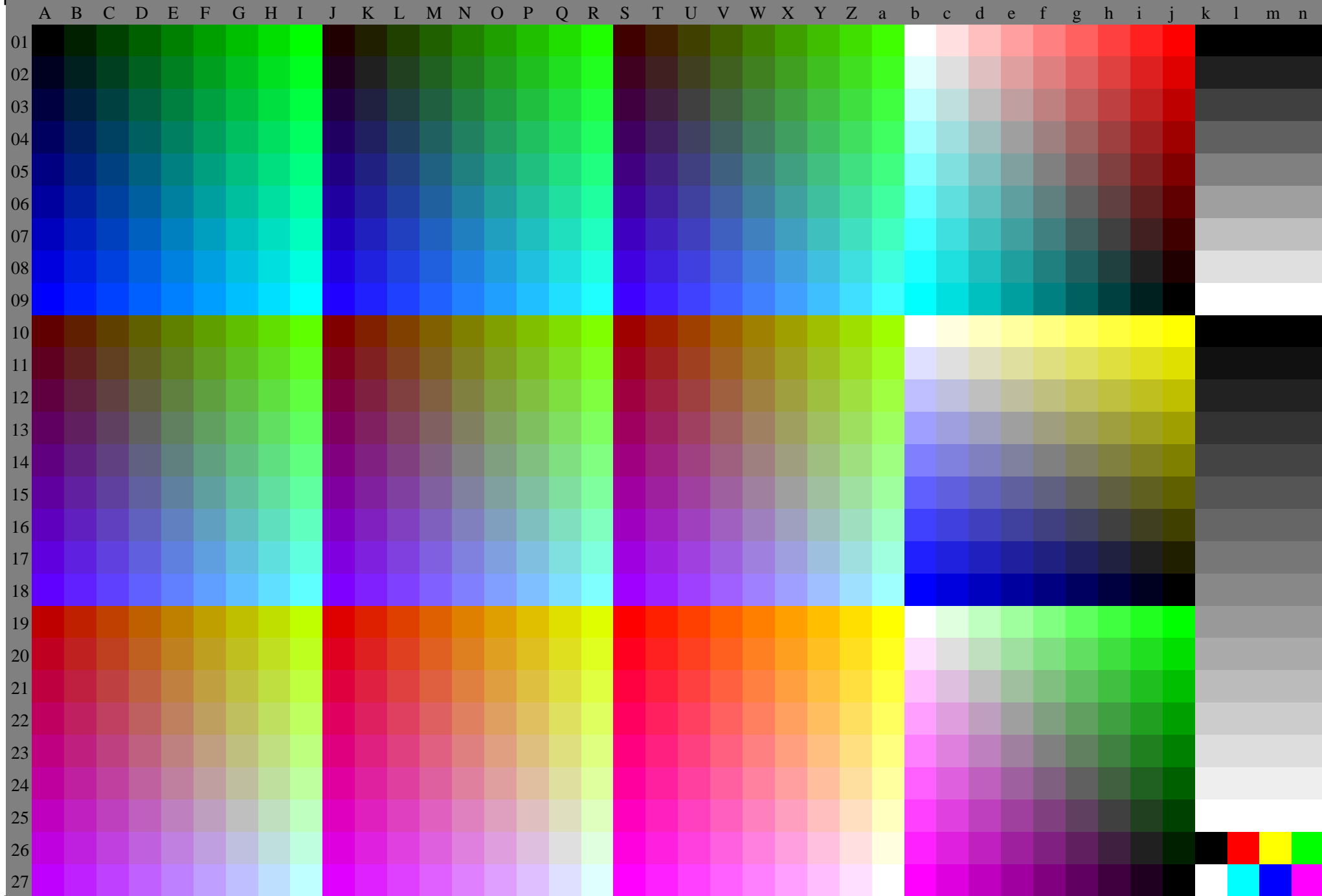
TUB-test chart fev6; Colorimetric system G

40x27=1080 colours for output or measurement:

input:  $(rgb/000n/w/nnn0/www)_d \rightarrow rgb*_d$

output: no change compared to input





row0-7n, 3/5, Test chart G with 40x27=1080 colours; digital equidistant 9 or 16 step colour scales; Colour data in column (A-n): **rgb (A\_n, colorm = 0, separation = F**



