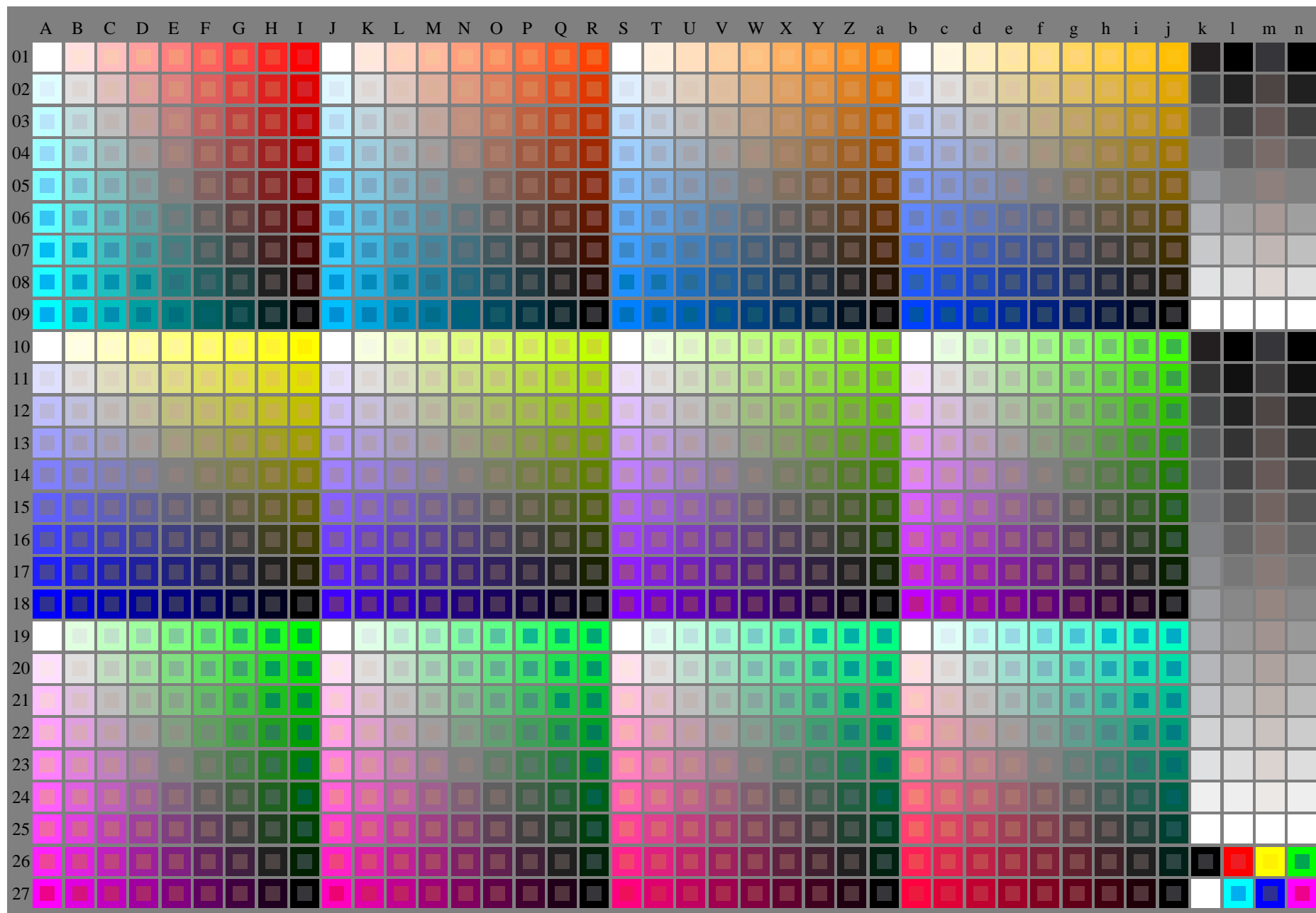


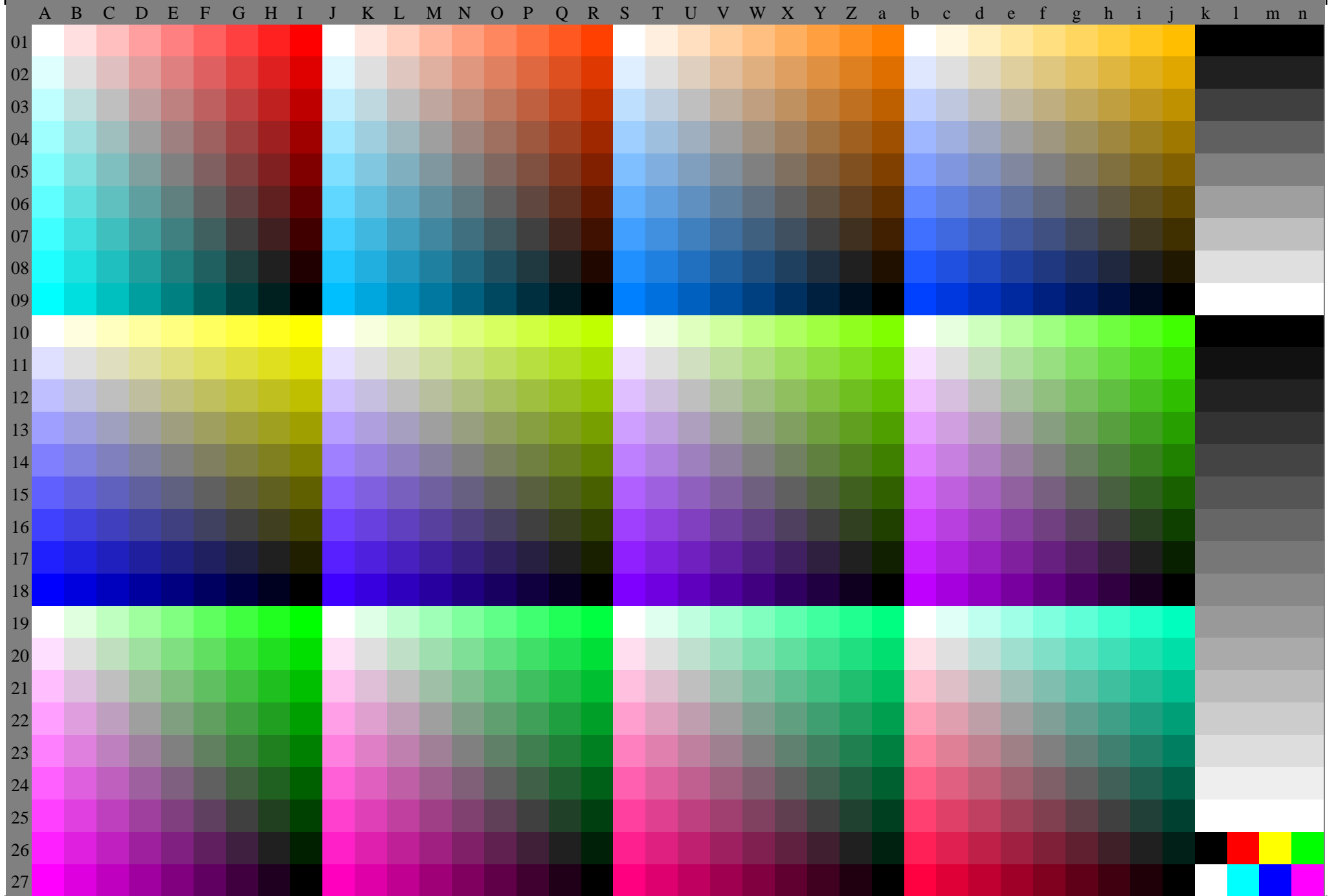
see similar files of the whole serie: <http://farbe.li.tu-berlin.de/fevs.htm>  
technical information: <http://farbe.li.tu-berlin.de> or <http://color.li.tu-berlin.de>

TUB registration: 20240201-fev9/fev910na.txt /.ps  
application for evaluation and measurement of display or print output

TUB material: code=rh4ta



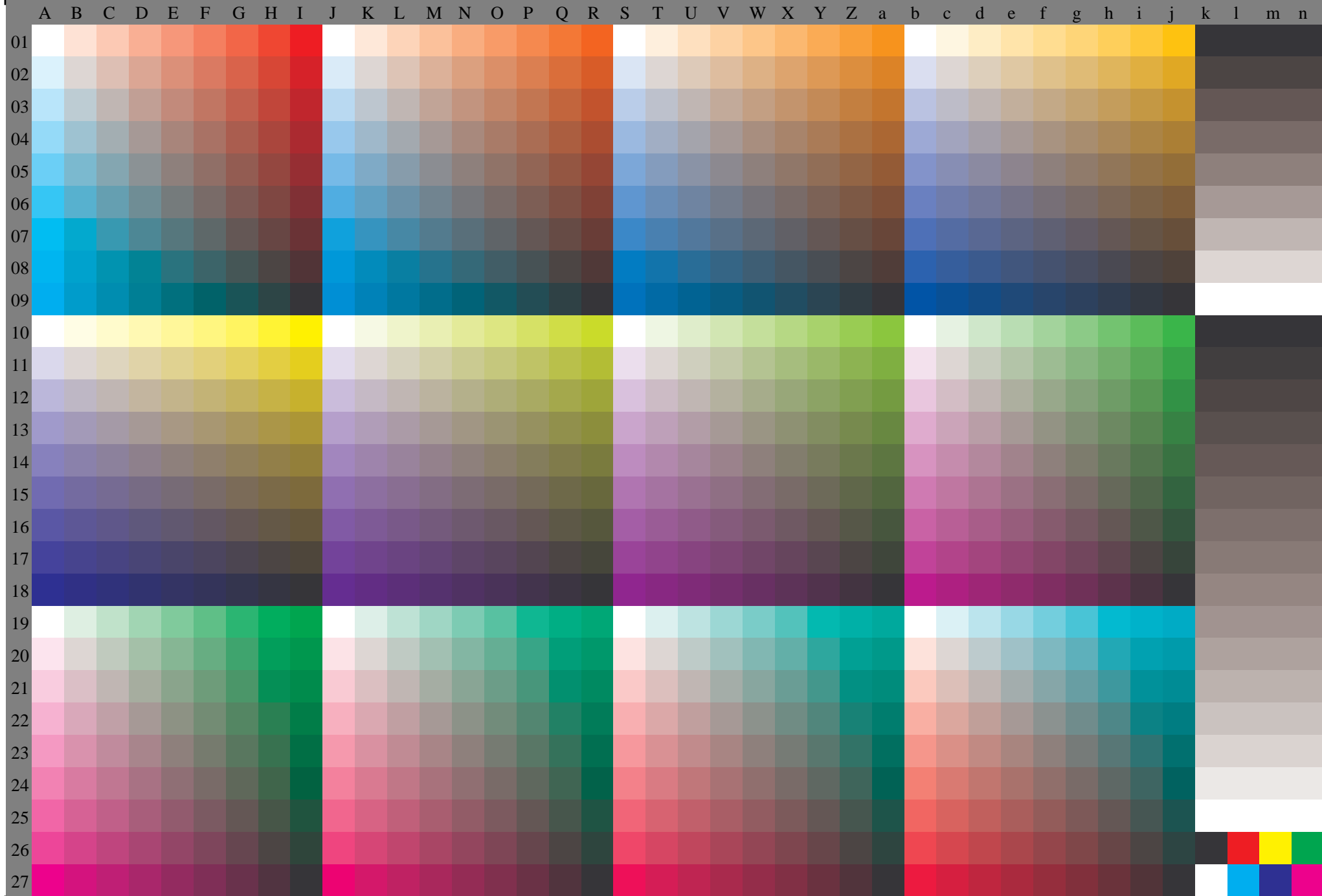




Form 90-7n, 3/11, Test chart O with 40x27=1080 colours; digital equidistant 9 or 16 step colour scales; Colour data in column (A\_n), colorm = 0, separation = F







27x27, 6/11, Test chart O with 40x27=1080 colours; digital equidistant 9 or 16 step colour scales; Colour data in column (A\_n), colorm = 0, separation = F



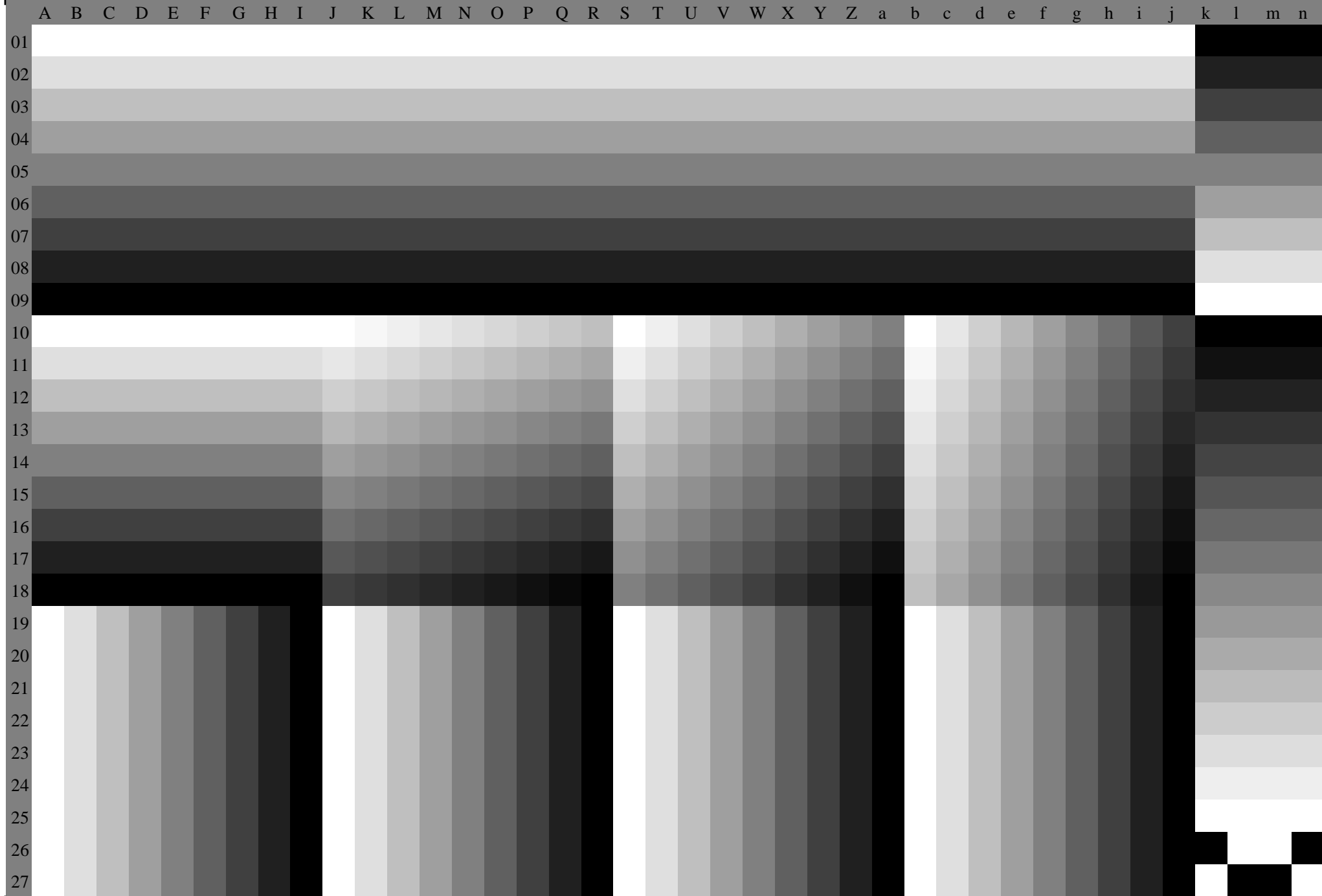
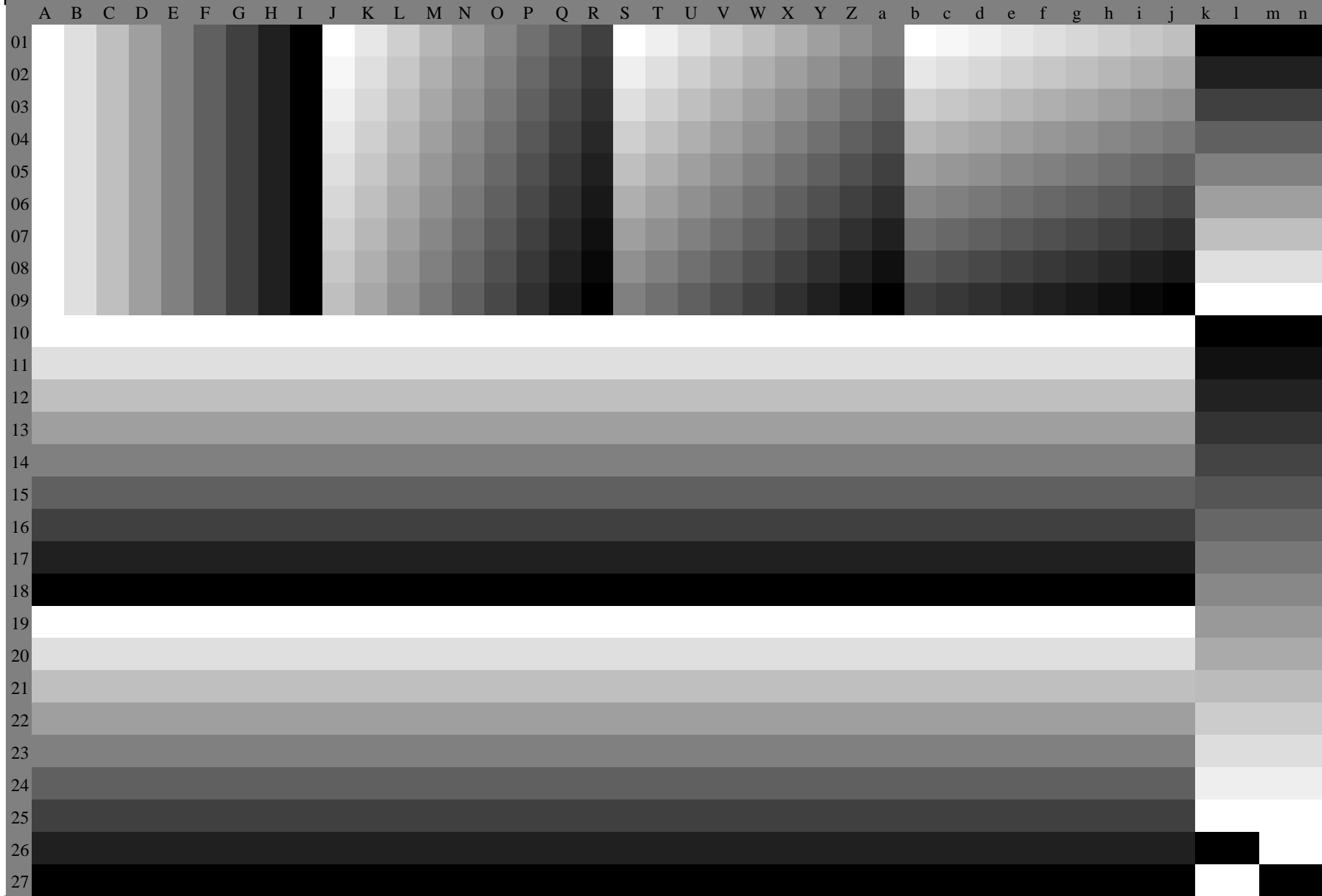


Fig. 90-7n, 8/11, Test chart O with 40x27=1080 colours; digital equidistant 9 or 16 step colour scales; Colour data in column (A-n): **c(A\_n), colorm = 0, separation = C**





For 90-7n, 9/11, Test chart O with 40x27=1080 colours; digital equidistant 9 or 16 step colour scales; Colour data in column (A-n): **m (A\_n), colorm = 0, separation = M**

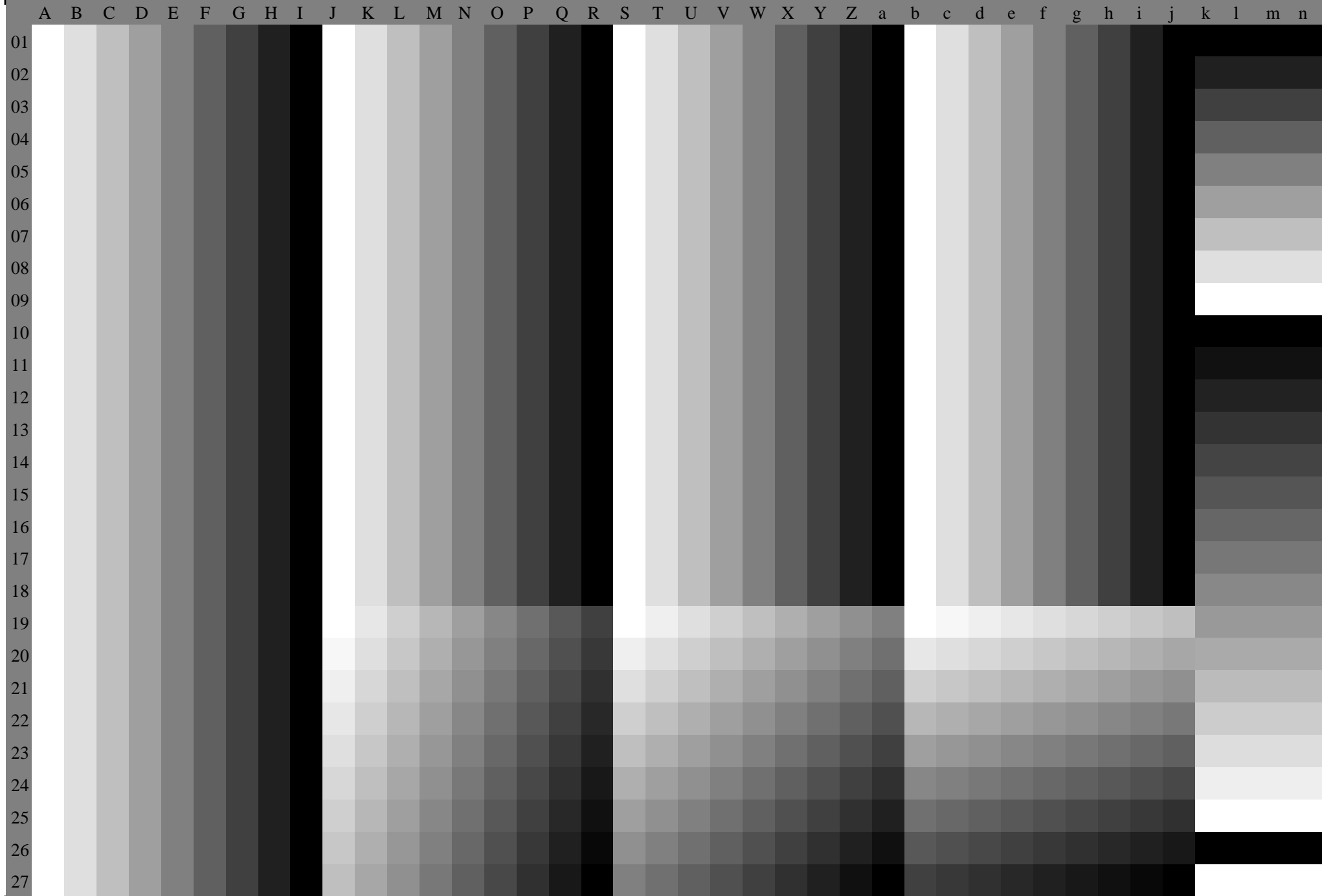


Fig. 90-7n, 10/11, Test chart O with 40x27=1080 colours; digital equidistant 9 or 16 step colour scales; Colour data in column (A-n): **y (A\_n), colorm = 0, separation = Y**

A B C D E F G H I J K L M N O P Q R S T U V W X Y Z a b c d e f g h i j k l m n

01  
02  
03  
04  
05  
06  
07  
08  
09  
10  
11  
12  
13  
14  
15  
16  
17  
18  
19  
20  
21  
22  
23  
24  
25  
26  
27