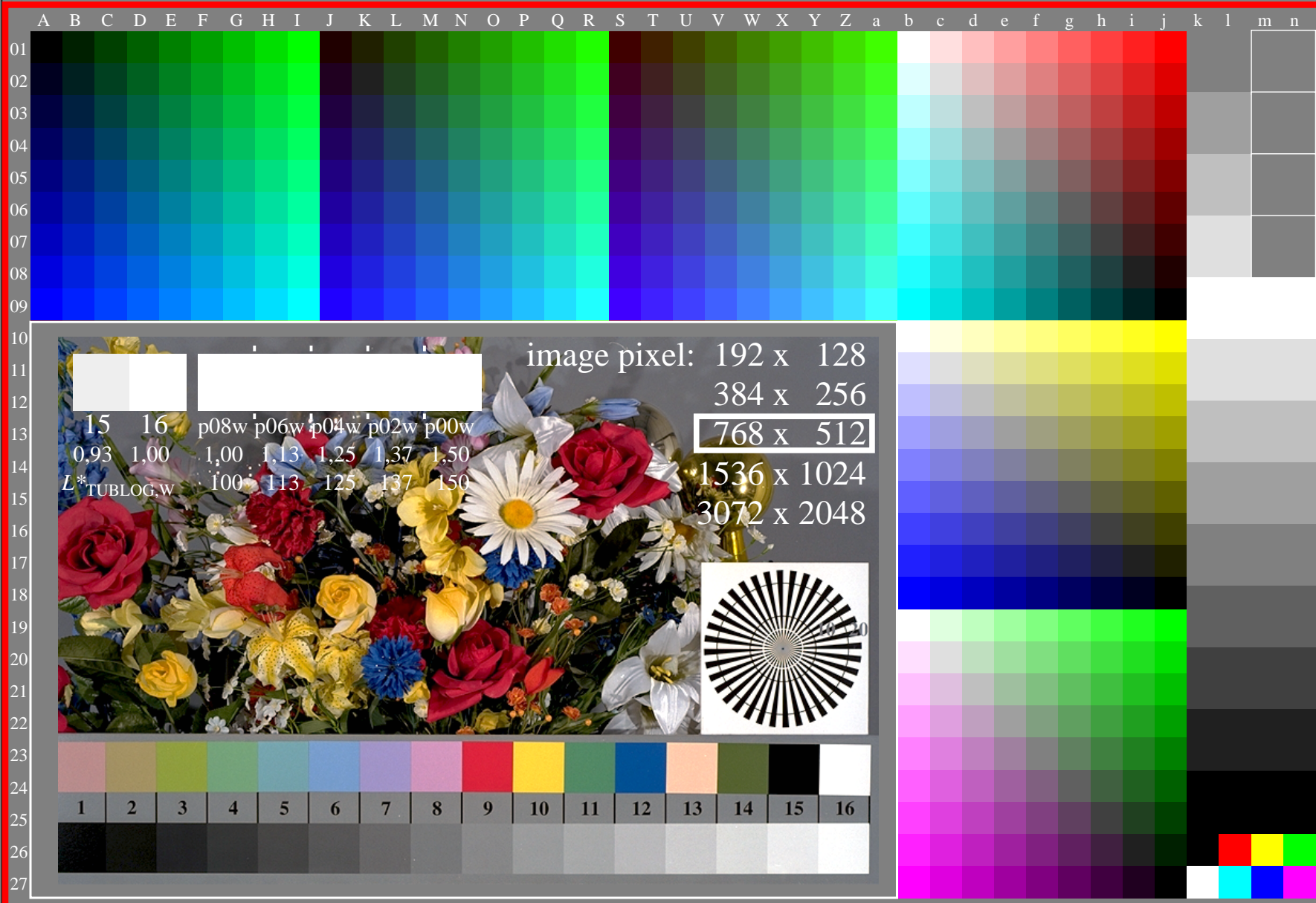


<http://farbe.li.tu-berlin.de/few1/few110na.txt> /ps; only vector graphic VG;
 see separate images of this page: <http://farbe.li.tu-berlin.de/few1/few1.htm>

see similar files of the whole serie: <http://farbe.li.tu-berlin.de/fews.htm>
 technical information: <http://farbe.li.tu-berlin.de> or <http://color.li.tu-berlin.de>

TUB registration: 20240501-few1/few110na.txt /ps
 application for evaluation and measurement of display or print output
 TUB material: code=rha4ta



code
 P₂-N
 w08n p00w
 w06n p02w
 w04n p04w
 w02n p06w
 w00n p08w
 w00n
 w02n w02n
 w04n w04n
 w06n w06n
 w08n w08n
 w10n w10n
 w12n w12n
 w14n w14n
 w16n w16n

image pixel: 192 x 128
 384 x 256
 768 x 512
 1536 x 1024
 3072 x 2048

15 16 p08w p06w p04w p02w p00w
 0,93 1,00 1,00 1,13 1,25 1,37 1,50
 L*_{TUBLOG,W} 100 113 125 137 150

1
2
3
4
5
6
7
8
9
10
11
12
13
14
15
16

few10-7n, gamma $g_a=2,400$, $g_p=1,000$,

few10-7n

TUB-test chart few1; Test charts with 5&9&16 step colour series for linearized display output
 Flower motif and 1080 colours according to ISO 9241-306; $0 \leq rgb^* \leq 1$ for display range N-W