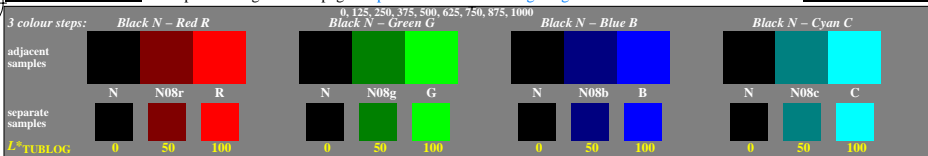
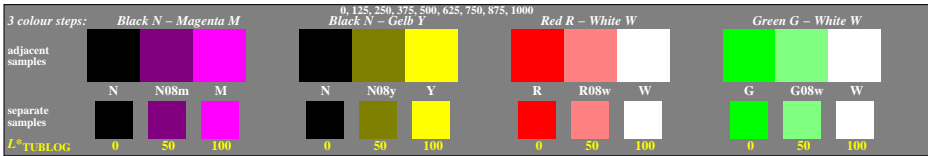


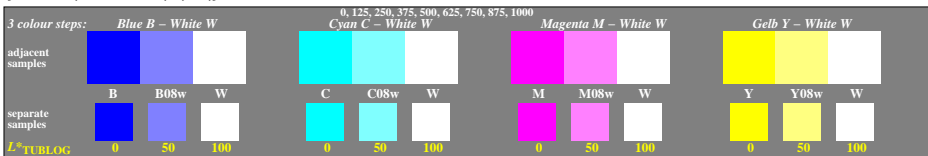
<http://farbe.li.tu-berlin.de/geo0/geo010n1.txt/ps>; only vector graphic **VM**; start output
see separate images of this page: <http://farbe.li.tu-berlin.de/geo0/geo0.htm>



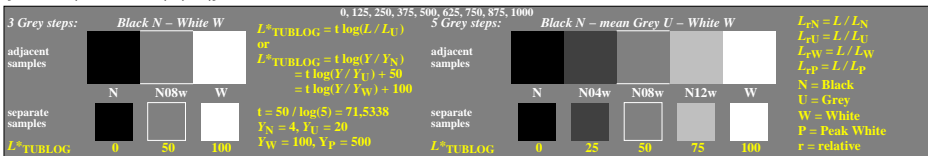
geo0-1a_R, Test samples: 13x3 and 1x5 colour steps, exp0=1, exp1=1, inv=1, xchart=0



geo0-3a_R, Test samples: 13x3 and 1x5 colour steps, exp0=1, exp1=1, inv=1, xchart=0



geo0-5a_R, Test samples: 13x3 and 1x5 colour steps, exp0=1, exp1=1, inv=1, xchart=0



geo0-7a_R, Test samples: 13x3 and 1x5 colour steps, exp0=1, exp1=1, inv=1, xchart=0

TUB-test chart geo0; Adjacent and separate colour samples for interval scaling
Three or 5 colour steps for the 14 colour series N–RGBCMYW and RGBCMY–W

see similar files of the whole serie: <http://farbe.li.tu-berlin.de/geas.htm>
technical information: <http://farbe.li.tu-berlin.de> or <http://color.li.tu-berlin.de>

TUB registration: 20240501-geo0/geo010n1.txt/ps
application for evaluation and measurement of display or print output

TUB material: code=thada