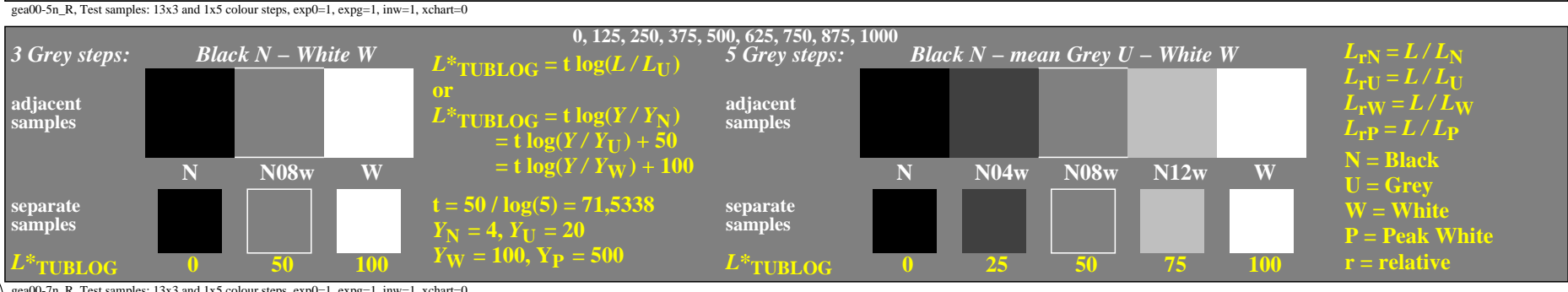
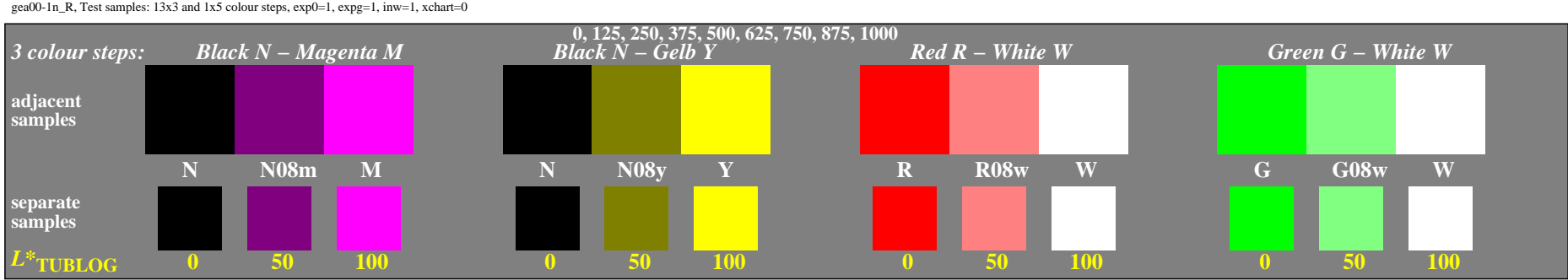
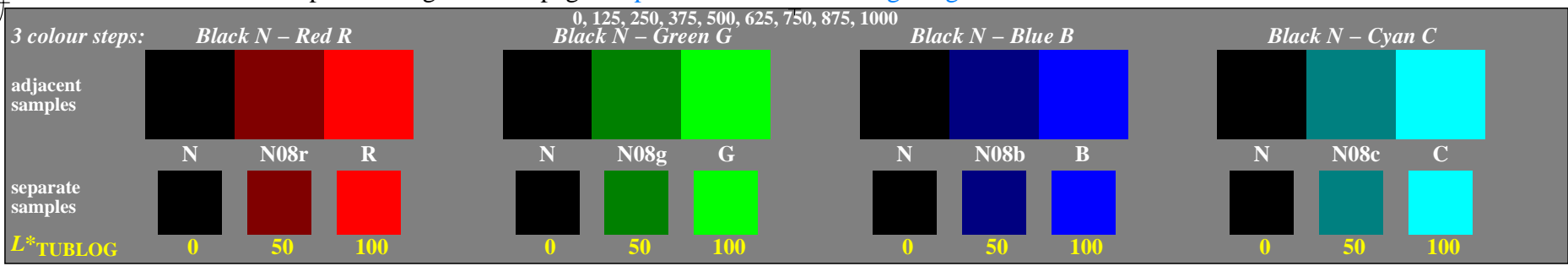


<http://farbe.li.tu-berlin.de/gea0/gea010np.pdf> /.ps; only vector graphic VG; start output
 see separate images of this page: <http://farbe.li.tu-berlin.de/gea0/gea0.htm>

TUB registration: 20240501-gea0/gea010np.pdf /.ps
 application for evaluation and measurement of display or print output
 TUB material: code=rh4ta



gea00-7n_R, Test samples: 13x3 and 1x5 colour steps, exp0=1, expg=1, inw=1, xchart=0

TUB-test chart gea0; Adjacent and separate colour samples for interval scaling
 Three or 5 colour steps for the 14 colour series N–RGBCMY and RGBCMY–W

see similar files of the whole serie: <http://farbe.li.tu-berlin.de/gea0/gea010np.pdf> /.ps
 technical information: <http://farbe.li.tu-berlin.de> or <http://color.li.tu-berlin.de>