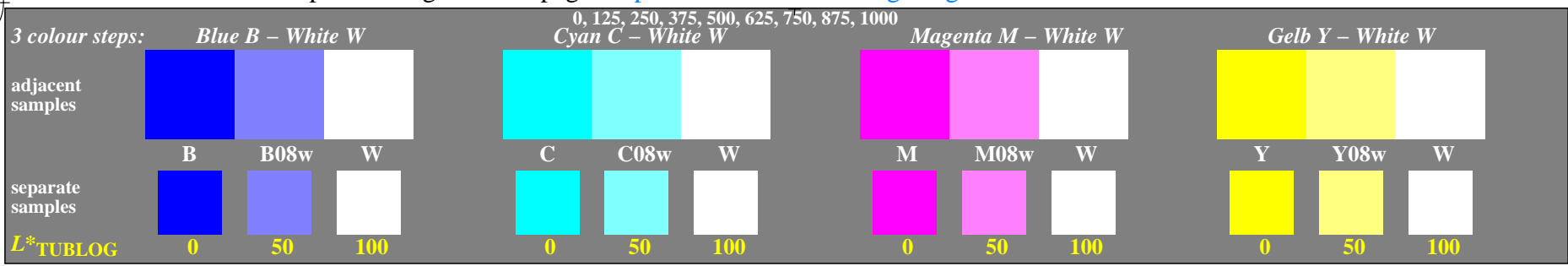


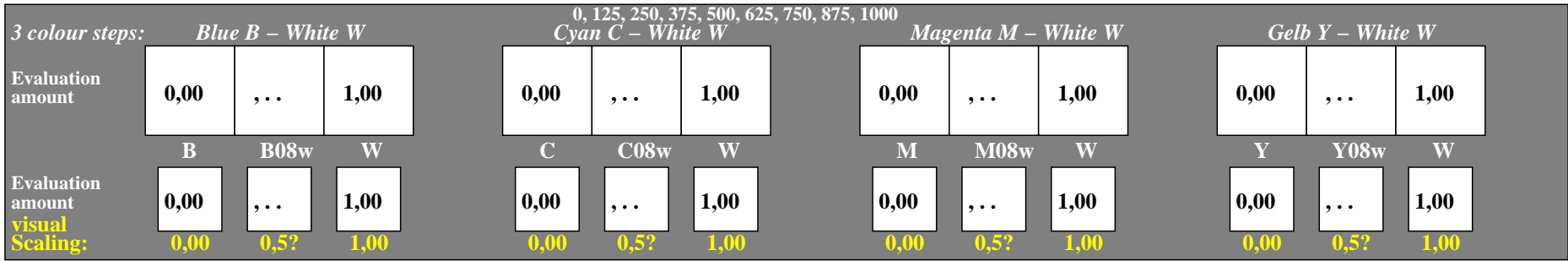
<http://farbe.li.tu-berlin.de/gea3/gea310np.pdf> / .ps; only vector graphic VG; start output  
 see separate images of this page: <http://farbe.li.tu-berlin.de/gea3/gea3.htm>

see similar files of the whole serie: <http://farbe.li.tu-berlin.de/gea3.htm>  
 technical information: <http://farbe.li.tu-berlin.de> or <http://color.li.tu-berlin.de>

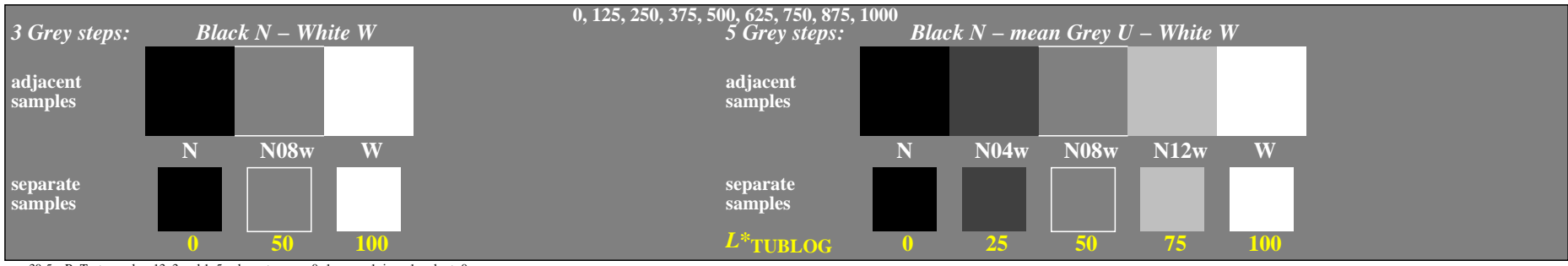
TUB registration: 20240501-gea3/gea310np.pdf / .ps  
 application for evaluation and measurement of display or print output  
 TUB material: code=rh4ta



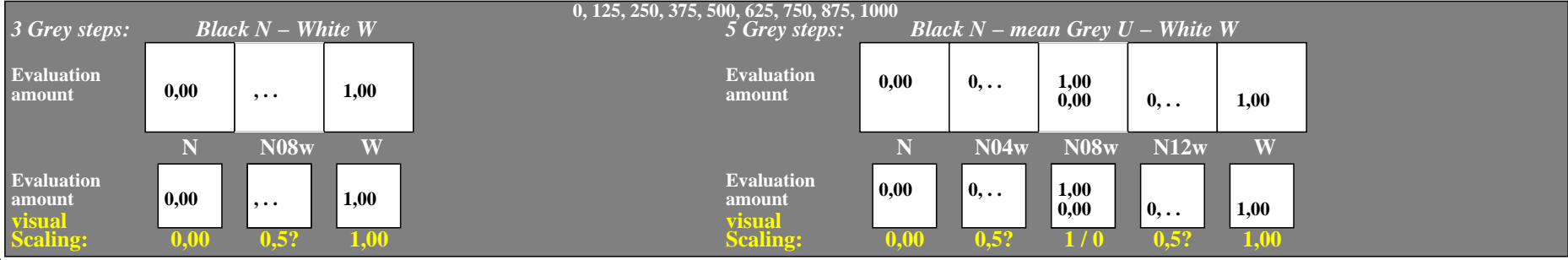
gea30-1n\_R, Test samples: 13x3 and 1x5 colour steps, exp0=1, expg=1, inw=1, xchart=0



gea30-3n\_R, Evaluation sheet: 13x3 and 1x5 colour steps, exp0=1, expg=1, inw=1, xchart=1



gea30-5n\_R, Test samples: 13x3 and 1x5 colour steps, exp0=1, expg=1, inw=1, xchart=0



gea30-7n\_R, Evaluation sheet: 13x3 and 1x5 colour steps, exp0=1, expg=1, inw=1, xchart=1

TUB-test chart gea3; Adjacent and separate colour samples for interval scaling  
 Evaluation example 3/5 colour steps for the 6 colour series BCMYN–W

