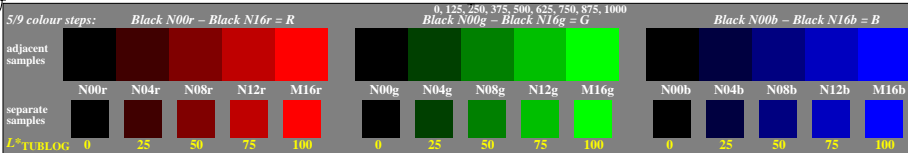
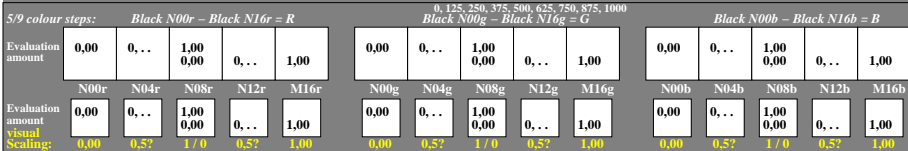


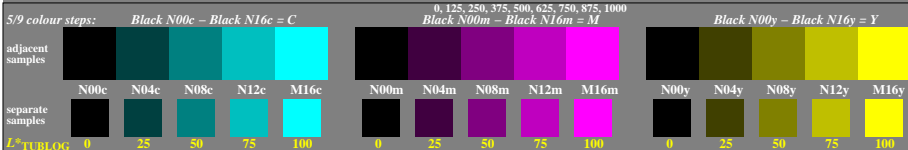
<http://farbe.li.tu-berlin.de/gea4/gea410n1.txt/ps>; only vector graphic VG; start output  
 see separate images of this page: <http://farbe.li.tu-berlin.de/gea4/gea4.htm>



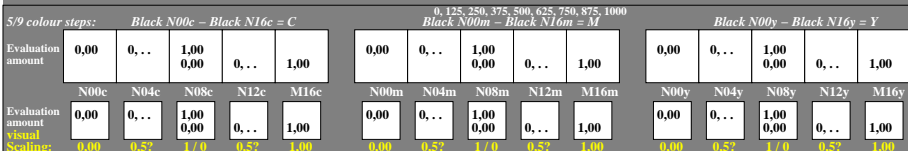
gea40-16, Test samples: 3x5 colour steps, exp0=1, exp1=1, inv=1, scharr=0



gea40-36, Evaluation sheet: 3x5 colour steps, exp0=1, exp1=1, inv=1, scharr=1



gea40-56, Test samples: 3x5 colour steps, exp0=1, exp1=1, inv=1, scharr=0



gea40-76, Evaluation sheet: 3x5 colour steps, exp0=1, exp1=1, inv=1, scharr=1

TUB-test chart gea4; Adjacent and separate colour samples for interval scaling

see similar files of the whole serie: <http://farbe.li.tu-berlin.de/gea4.htm>  
 technical information: <http://farbe.li.tu-berlin.de> or <http://color.li.tu-berlin.de>

TUB registration: 20240501-gea4/gea410n1.txt/ps  
 application for evaluation and measurement of display or print output

TUB material: code=thada