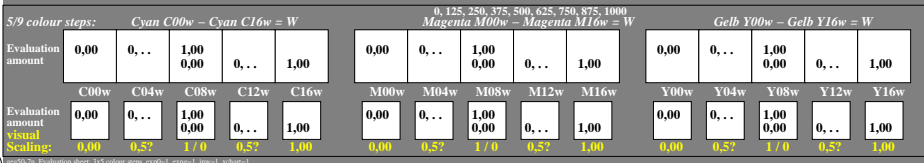
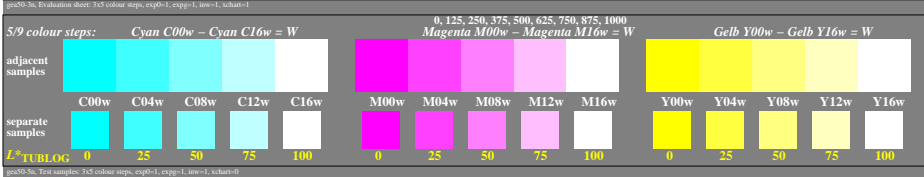
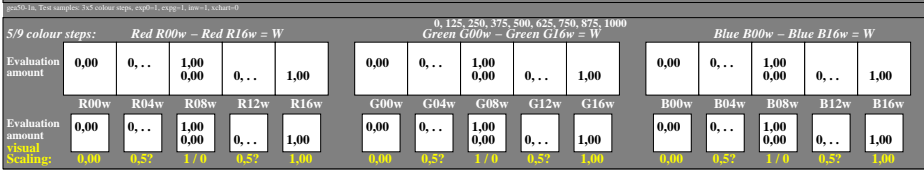
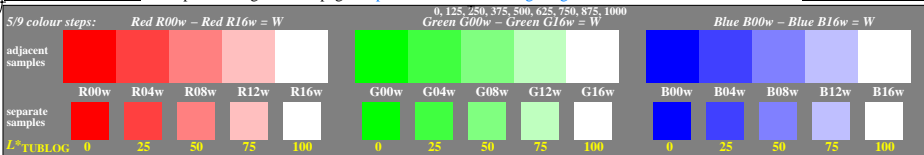


<http://farbe.li.tu-berlin.de/gea5/gea510n1.txt> /ps; only vector graphic VG; start output
 see separate images of this page: <http://farbe.li.tu-berlin.de/gea5/gea5.htm>



TUB-test chart gea5; Adjacent and separate colour samples for interval scaling

see similar files of the whole serie: <http://farbe.li.tu-berlin.de/gea5.htm>
 technical information: <http://farbe.li.tu-berlin.de> or <http://color.li.tu-berlin.de>

TUB registration: 20240501-gea5/gea510n1.txt /ps
 application for evaluation and measurement of display or print output

TUB material: code=thada