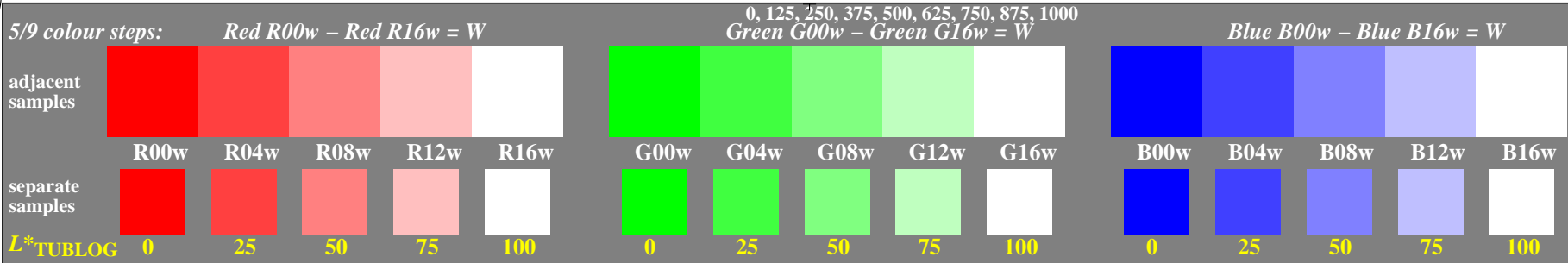


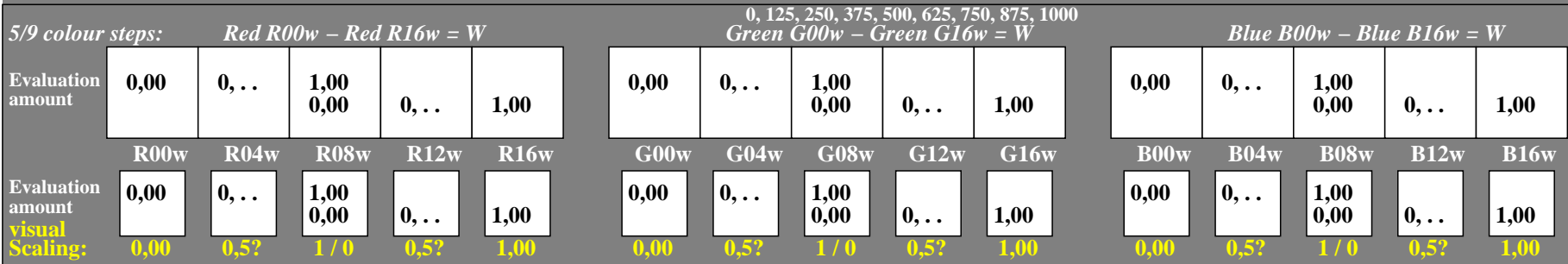
<http://farbe.li.tu-berlin.de/gea5/gea510na.txt> /.ps; only vector graphic VG; start output
 see separate images of this page: <http://farbe.li.tu-berlin.de/gea5/gea5.htm>

TUB registration: 20240501-gea5/gea510na.txt /.ps
 application for evaluation and measurement of display or print output

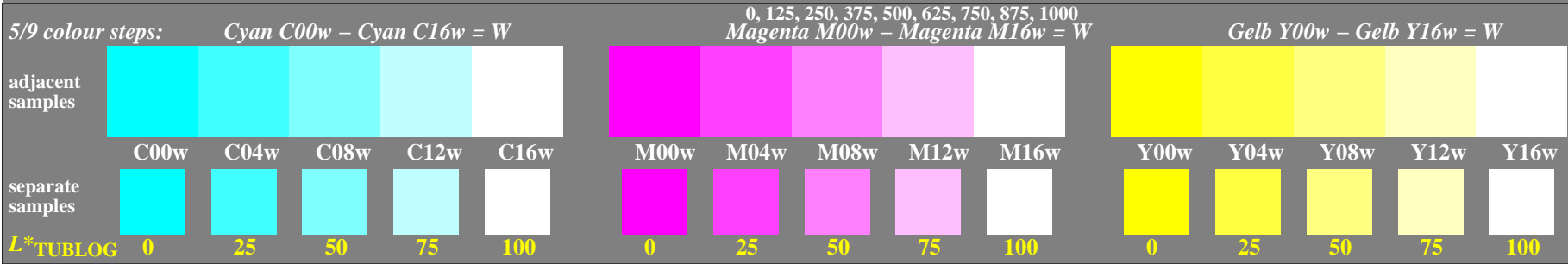
TUB material: code=rh4ta



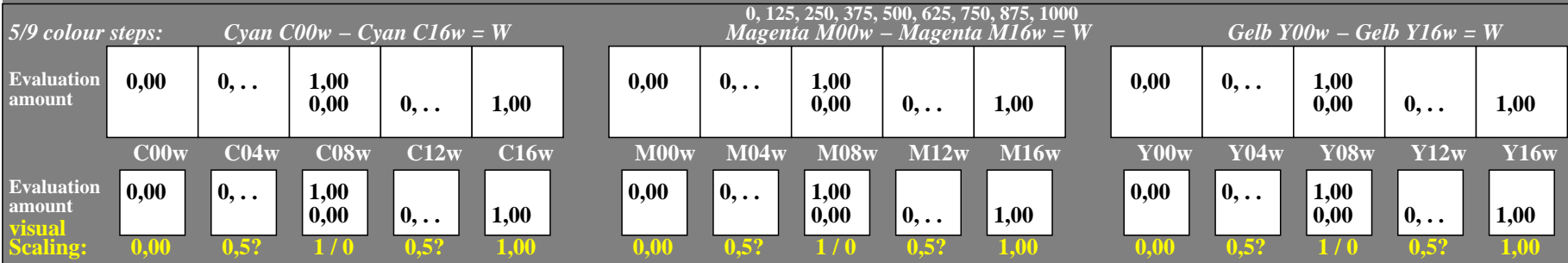
gea50-1n. Test samples: 3x5 colour steps, exp0=1, expg=1, inw=1, xchart=0



gea50-3n. Evaluation sheet: 3x5 colour steps, exp0=1, expg=1, inw=1, xchart=1



gea50-5n. Test samples: 3x5 colour steps, exp0=1, expg=1, inw=1, xchart=0



gea50-7n. Evaluation sheet: 3x5 colour steps, exp0=1, expg=1, inw=1, xchart=1

TUB-test chart gea5; Adjacent and separate colour samples for interval scaling

see similar files of the whole serie: <http://farbe.li.tu-berlin.de/gea5.htm>
 technical information: <http://farbe.li.tu-berlin.de> or <http://color.li.tu-berlin.de>