

<http://farbe.li.tu-berlin.de/gea6/gea6l0n1.txt/.ps>; only vector graphic VG; start output
 see separate images of this page: <http://farbe.li.tu-berlin.de/gea6/gea6.htm>

3 colour steps: $N00u - N16u = \text{Grey U}$
 0, 250, 500



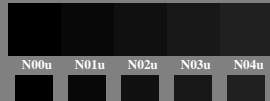
L^*_{TUBLOG} 0 25 50

2x5 colour steps: $N00u - N16u = \text{Grey U}$
 0, 125, 250, 375, 500



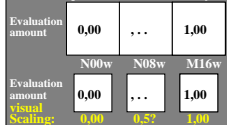
0 12 25 37 50

Black $N00u - N04u$
 0, 31, 62, 93, 125

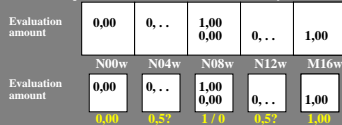


0 3 6 9 12

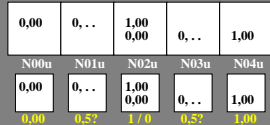
3 colour steps: $N00u - N16u = \text{Grey U}$
 0, 250, 500



2x5 colour steps: $N00u - N16u = \text{Grey U}$
 0, 125, 250, 375, 500



Black $N00u - N04u$
 0, 31, 62, 93, 125

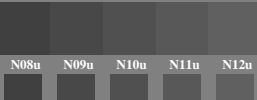


5/9 colour steps: $N04u - N08u$
 125, 156, 187, 218, 250



L^*_{TUBLOG} 12 16 19 22 25

$N08u - N12u$
 250, 281, 312, 343, 375



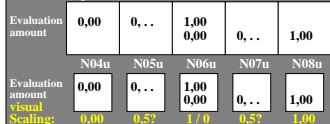
25 28 31 34 37

$N12u - N16u = \text{Grey U}$
 375, 406, 437, 468, 500

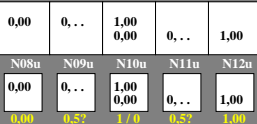


37 40 44 47 50

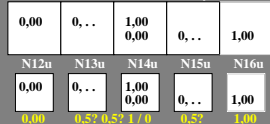
5/9 colour steps: $N04u - N08u$
 125, 156, 187, 218, 250



$N08u - N12u$
 250, 281, 312, 343, 375



$N12u - N16u = \text{Grey U}$
 375, 406, 437, 468, 500



TUB-test chart gea6; Adjacent and separate colour samples for intervall scaling
 Evaluation example and evaluation of light grey steps of the series W-U with 3 or 5 of 17 steps

see similar files of the whole serie: <http://farbe.li.tu-berlin.de/gea6.htm>
 technical information: <http://farbe.li.tu-berlin.de> or <http://color.li.tu-berlin.de>

TUB registration: 2024/201-gea6/gea6l0n1.txt/.ps
 application for evaluation and measurement of display or print output

TUB material: code=thada