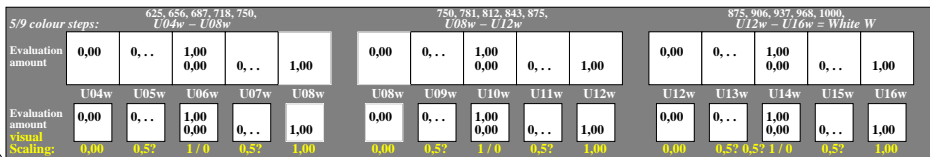
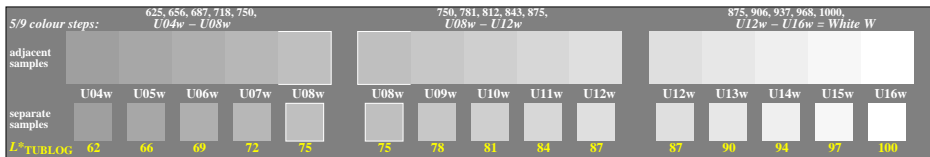
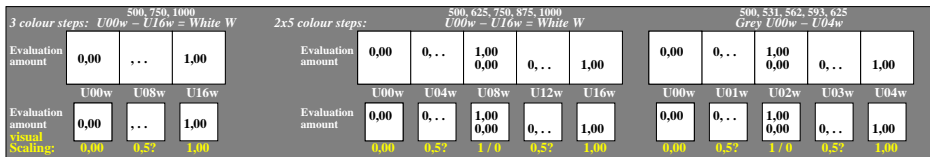
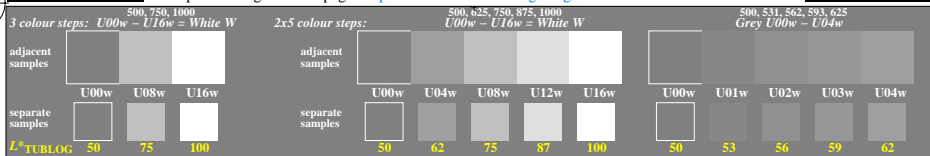


<http://farbe.li.tu-berlin.de/gea7/gea710n1.txt.ps>; only vector graphic VG; start output
 see separate images of this page: <http://farbe.li.tu-berlin.de/gea7/gea7.htm>



TUB-test chart gea7: Adjacent and separate colour samples for intervall scaling
 Evaluation example and evaluation of dark grey steps of the series U-N with 3 or 5 of 17 steps

TUB registration: 20240201-gea7/gea710n1.txt.ps
 application for evaluation and measurement of display or print output

TUB material: code=thada

see similar files of the whole serie: <http://farbe.li.tu-berlin.de/gea7.htm>
 technical information: <http://farbe.li.tu-berlin.de> or <http://color.li.tu-berlin.de>