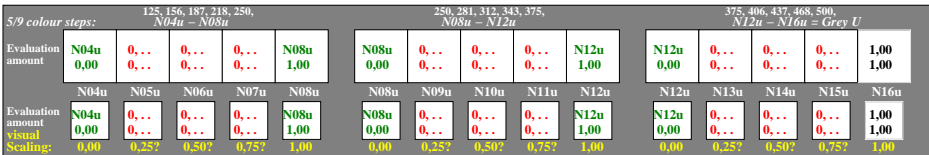
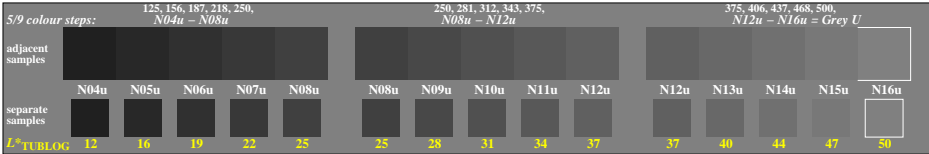
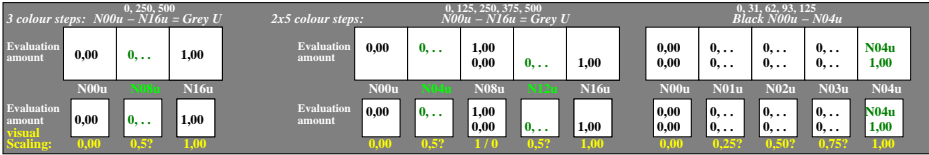
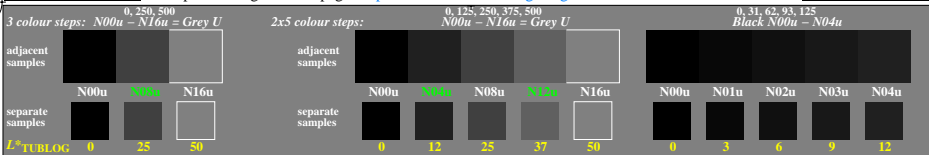


<http://farbe.li.tu-berlin.de/gea8/gea810n1.txt/ps>; only vector graphic VG; start output
 see separate images of this page: <http://farbe.li.tu-berlin.de/gea8/gea8.htm>



TUB-test chart gea8; Adjacent and separate colour samples for Gamma calculation
 Evaluation example and evaluation of light grey steps of the series W-U with 3 or 5 of 17 steps

see similar files of the whole serie: <http://farbe.li.tu-berlin.de/gea8.htm>
 technical information: <http://farbe.li.tu-berlin.de> or <http://color.li.tu-berlin.de>

TUB registration: 20240201-gea8/gea810n1.txt/ps
 application for evaluation and measurement of display or print output
 TUB material: code=thada