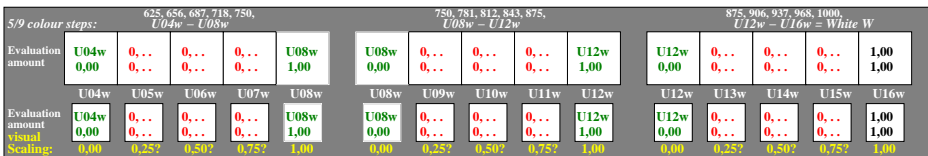
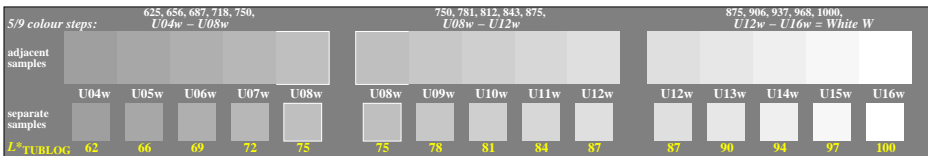
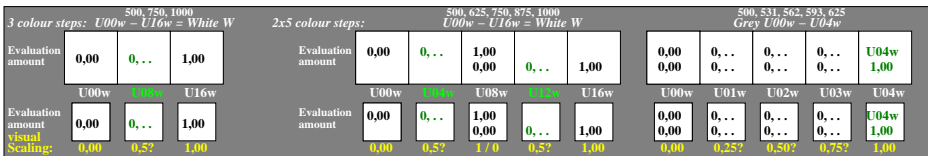
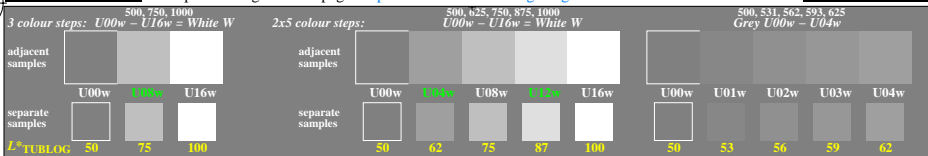


<http://farbe.li.tu-berlin.de/gea9/gea910n1.txt> /ps; only vector graphic VG; start output
 see separate images of this page: <http://farbe.li.tu-berlin.de/gea9/gea9.htm>



TUB-test chart gea9; Adjacent and separate colour samples for Gamma calculation
 Evaluation example and evaluation of dark grey steps of the series U-N with 3 or 5 of 17 steps

TUB registration: 20240201-gea9/gea910n1.txt /ps
 application for evaluation and measurement of display or print output

TUB material: code=thada

see similar files of the whole serie: <http://farbe.li.tu-berlin.de/gea9.htm>
 technical information: <http://farbe.li.tu-berlin.de> or <http://color.li.tu-berlin.de>