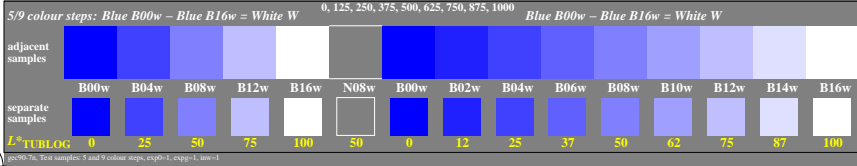
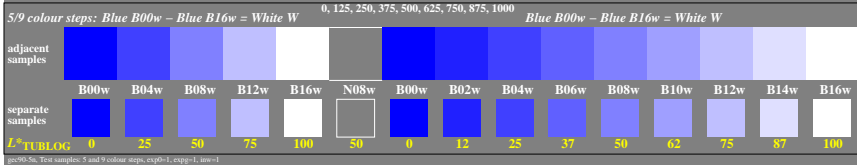
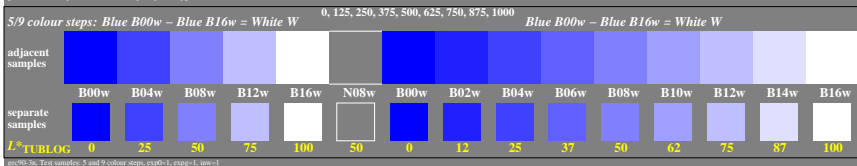
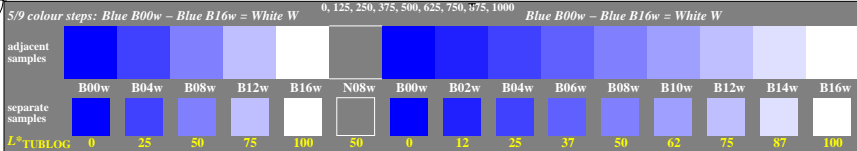


<http://farbe.li.tu-berlin.de/gec9/gec9l0n1.txt> / .ps; only vector graphic VG; start output
 see separate images of this page: <http://farbe.li.tu-berlin.de/gec9/gec9.htm>



TUB-test chart gec9; Adjacent and separate colour samples for interval scaling
 Evaluation of colour steps of the series B–W with 5 and 9 steps; surround mean Grey U=N08w

see similar files of the whole serie: <http://farbe.li.tu-berlin.de/gec9.htm>
 technical information: <http://farbe.li.tu-berlin.de> or <http://color.li.tu-berlin.de>

TUB registration: 20240601-gec9/gec9l0n1.txt / .ps
 application for evaluation and measurement of display or print output
 TUB material: code=thata

