

<http://farbe.li.tu-berlin.de/ged3/ged3l0n1.txt/.ps>; only vector graphic VG; start output
 see separate images of this page: <http://farbe.li.tu-berlin.de/ged3/ged3.htm>

5/9 colour steps: Black N00b – Black N16b = Blue B

0, 125, 250, 375, 500, 625, 750, 875, 1000

Black N00b – Black N16b = Blue B

adjacent samples



separate samples



L^* TUBLOG

0 25 50 75 100 25 0 12 25 37 50 62 75 87 100

ged30-1a, Test samples: 5 and 9 colour steps, exp0=1, exp9=1, inv=1

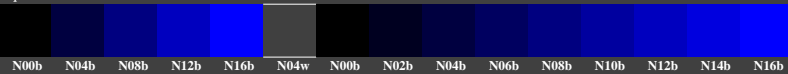
L^* TUBLOG vis
 100 ● 150?
 87 ● 137?
 75 ● 125?
 62 ● 112?
 50 ● 100?

5/9 colour steps: Black N00b – Black N16b = Blue B

0, 125, 250, 375, 500, 625, 750, 875, 1000

Black N00b – Black N16b = Blue B

adjacent samples



separate samples



L^* TUBLOG

0 25 50 75 100 25 0 12 25 37 50 62 75 87 100

ged30-3a, Test samples: 5 and 9 colour steps, exp0=1, exp9=1, inv=1

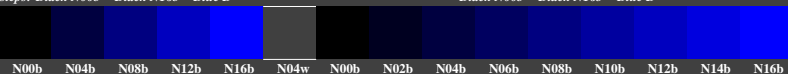
●
 ●
 ●

5/9 colour steps: Black N00b – Black N16b = Blue B

0, 125, 250, 375, 500, 625, 750, 875, 1000

Black N00b – Black N16b = Blue B

adjacent samples



separate samples



L^* TUBLOG

0 25 50 75 100 25 0 12 25 37 50 62 75 87 100

ged30-5a, Test samples: 5 and 9 colour steps, exp0=1, exp9=1, inv=1

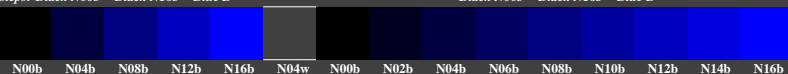
L^* TUBLOG vis
 100 ● 150?
 87 ● 137?
 75 ● 125?
 62 ● 112?
 50 ● 100?

5/9 colour steps: Black N00b – Black N16b = Blue B

0, 125, 250, 375, 500, 625, 750, 875, 1000

Black N00b – Black N16b = Blue B

adjacent samples



separate samples



L^* TUBLOG

0 25 50 75 100 25 0 12 25 37 50 62 75 87 100

ged30-7a, Test samples: 5 and 9 colour steps, exp0=1, exp9=1, inv=1

●
 ●
 ●
 ●

TUB-test chart ged3; Adjacent and separate colour samples for intervall scaling
 Evaluation of colour steps of the series N-B with 5 and 9 steps; surround dark Grey D=N04w

see similar files of the whole serie: <http://farbe.li.tu-berlin.de/geds.htm>
 technical information: <http://farbe.li.tu-berlin.de> or <http://color.li.tu-berlin.de>

TUB registration: 20240601-ged3/ged3l0n1.txt/.ps
 application for evaluation and measurement of display or print output
 TUB material: code=thata