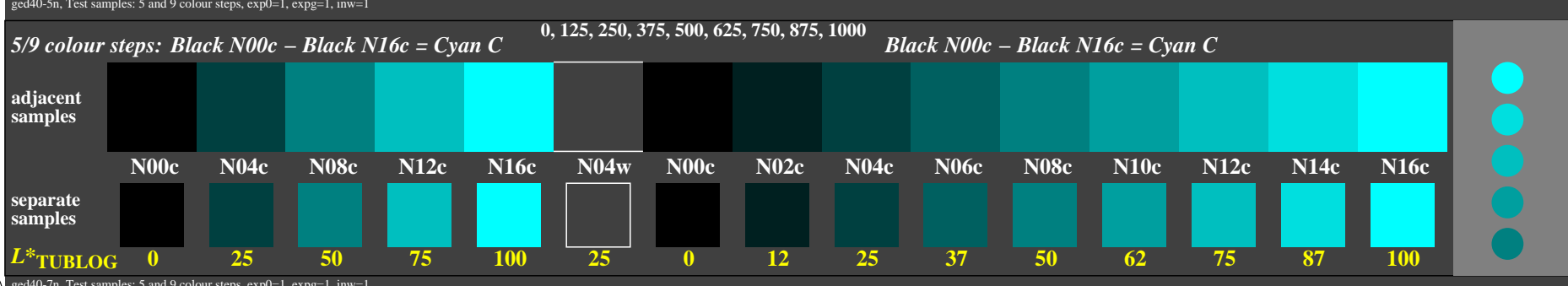
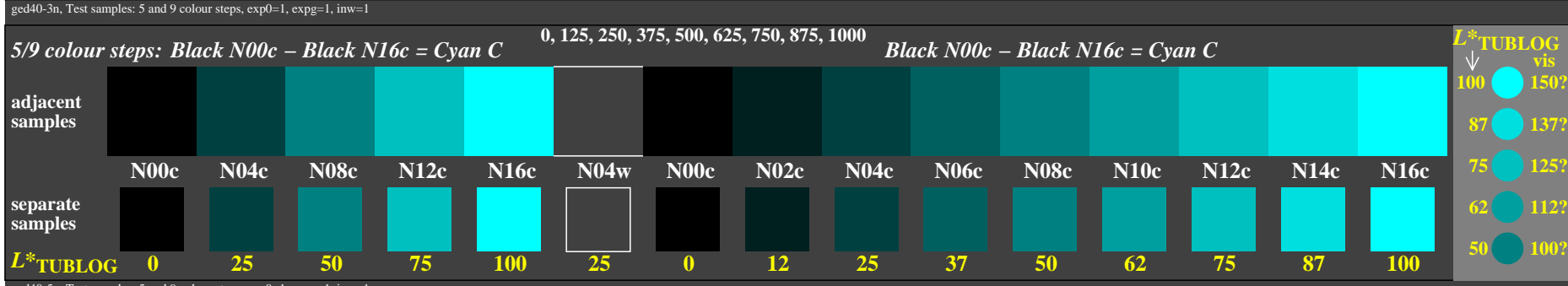
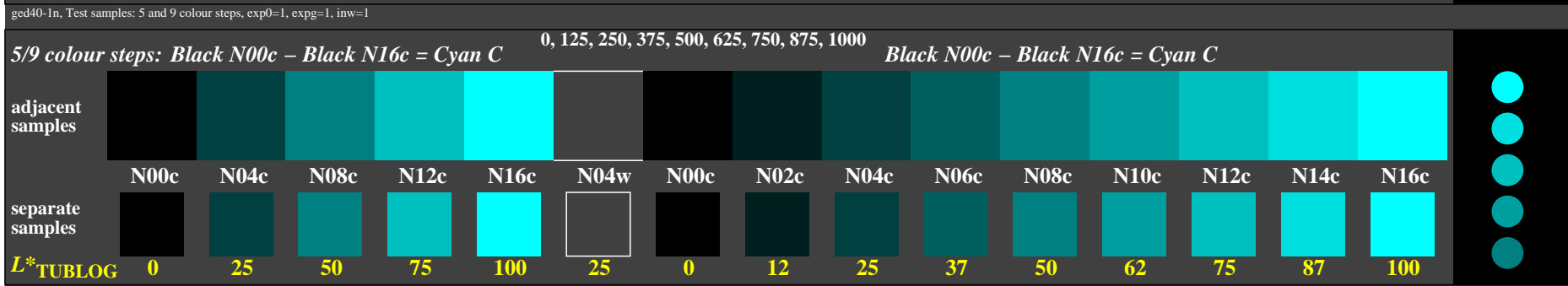
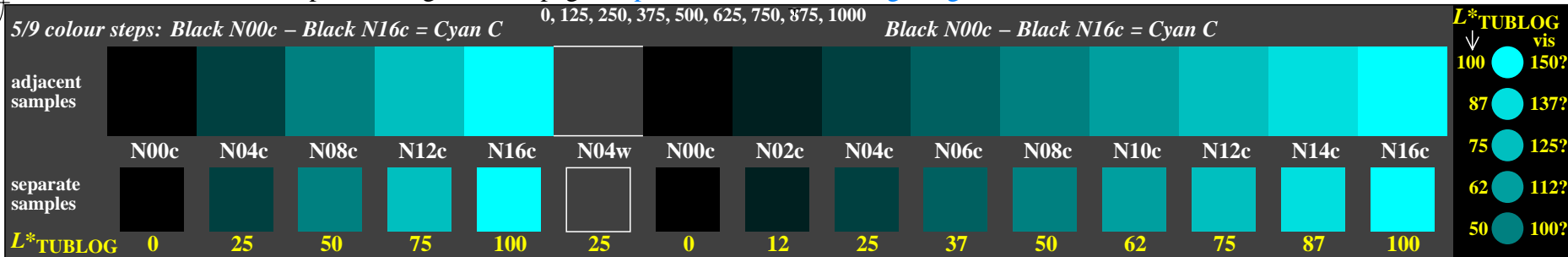


<http://farbe.li.tu-berlin.de/ged4/ged4l0np.pdf> / .ps; only vector graphic VG; start output
 see separate images of this page: <http://farbe.li.tu-berlin.de/ged4/ged4.htm>



TUB-test chart ged4; Adjacent and separate colour samples for intervall scaling
 Evaluation of colour steps of the series N–C with 5 and 9 steps; surround dark Grey D=N04w

see similar files of the whole serie: <http://farbe.li.tu-berlin.de/geds.htm>
 technical information: <http://farbe.li.tu-berlin.de> or <http://color.li.tu-berlin.de>

TUB registration: 20240601-ged4/ged4l0np.pdf / .ps
 application for evaluation and measurement of display or print output

TUB material: code=rh4ta