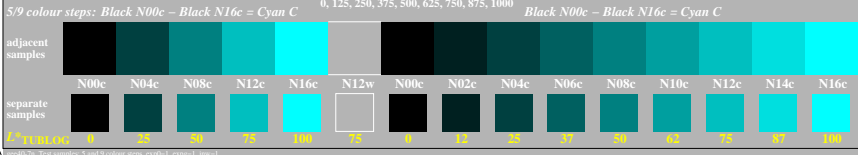
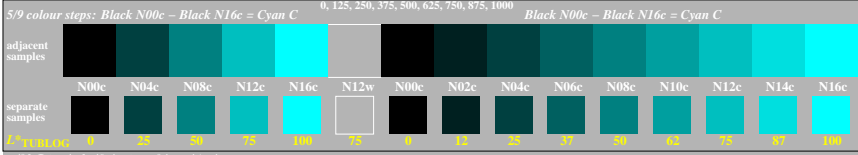
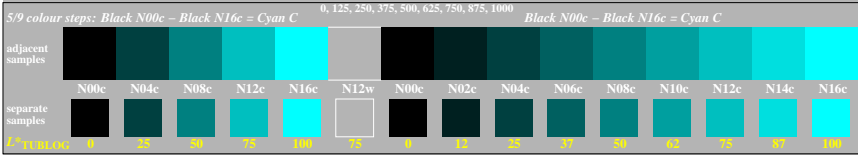
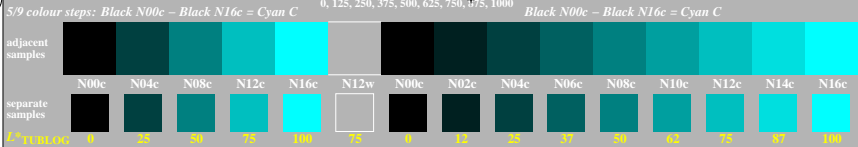


<http://farbe.li.tu-berlin.de/gee4/gee4l0n1.txt /ps>; only vector graphic VG; start output
 see separate images of this page: <http://farbe.li.tu-berlin.de/gee4/gee4.htm>



TUB-test chart gee4; Adjacent and separate colour samples for interval scaling
 Evaluation of colour steps of the series N–C with 5 and 9 steps; surround light Grey H=N12w

see similar files of the whole serie: <http://farbe.li.tu-berlin.de/gees.htm>
 technical information: <http://farbe.li.tu-berlin.de> or <http://color.li.tu-berlin.de>

TUB registration: 20240601-gee4/gee4l0n1.txt / ps
 application for evaluation and measurement of display or print output

TUB material: code=thata