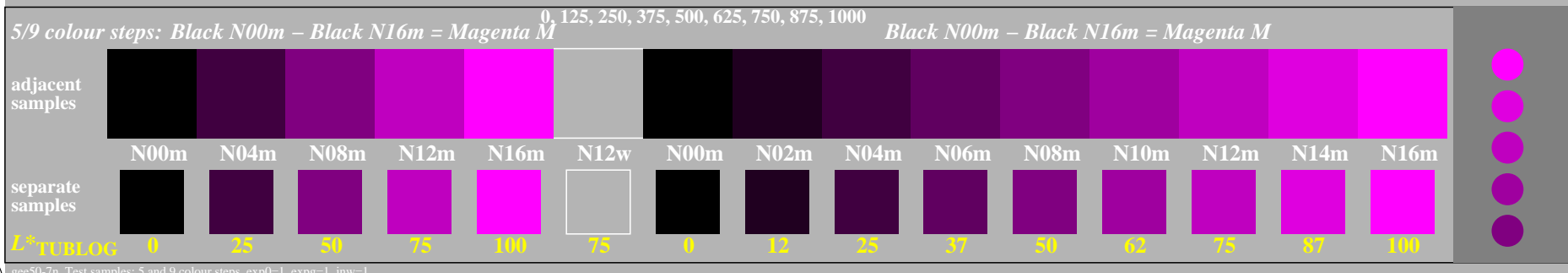
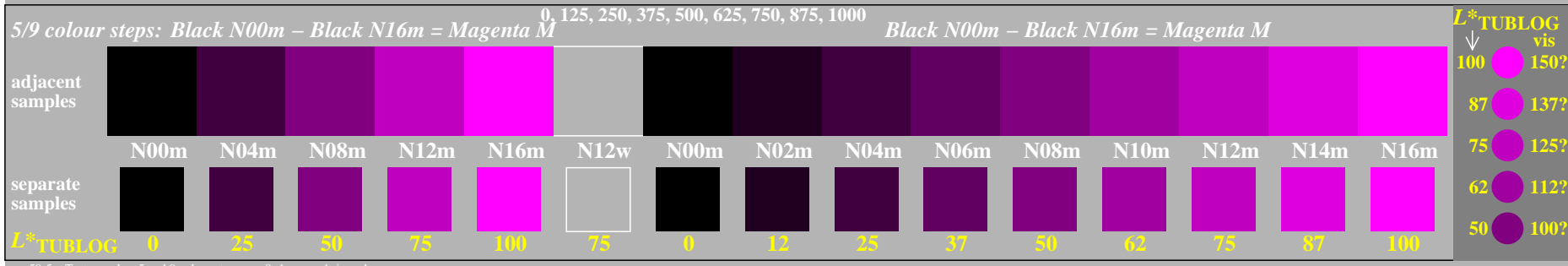
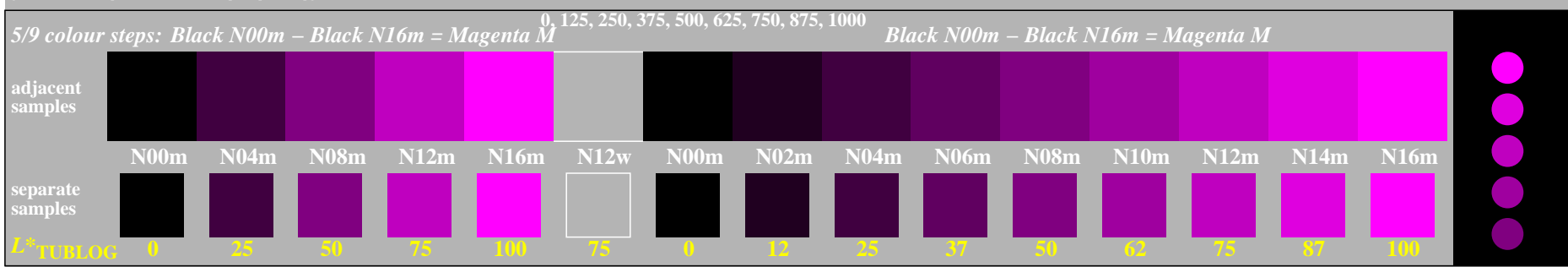
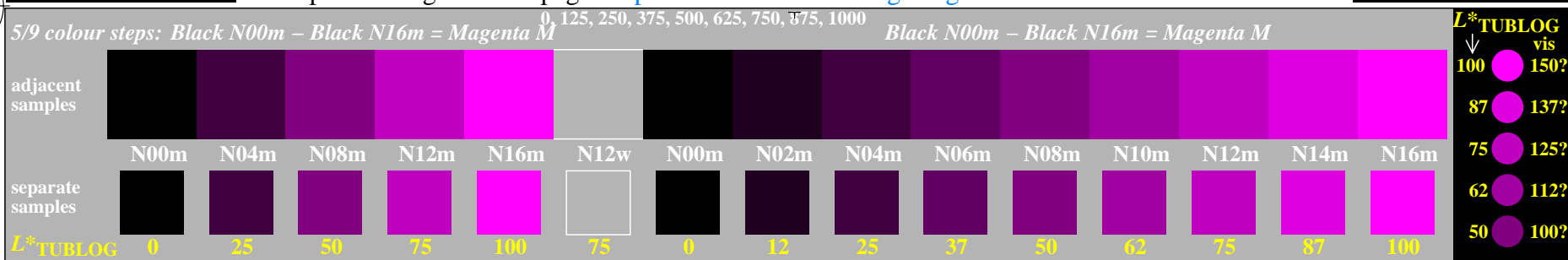


see similar files of the whole serie: <http://farbe.li.tu-berlin.de/gee5/gee510np.pdf> / .ps  
 application for evaluation and measurement of display or print output  
<http://farbe.li.tu-berlin.de> or <http://color.li.tu-berlin.de>

TUB registration: 20240601-gee5/gee510np.pdf / .ps  
 TUB material: code=rh4ta



TUB-test chart gee5; Adjacent and separate colour samples for intervall scaling  
 Evaluation of colour steps of the series N–M with 5 and 9 steps; surround light Grey H=N12w