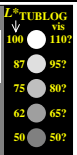


<http://farbe.li.tu-berlin.de/geg0/geg0l0n1.txt/.ps>; only vector graphic VG; start output
 see separate images of this page: <http://farbe.li.tu-berlin.de/geg0/geg0.htm>

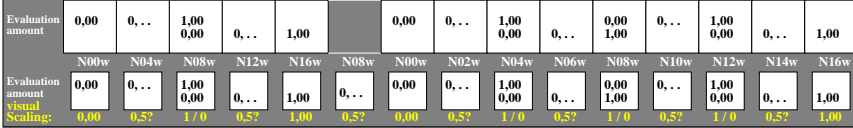
5/9 colour steps: Black N00w – Black N16w = White W 0, 125, 250, 375, 500, 625, 750, 875, 1000 Black N00w – Black N16w = White W



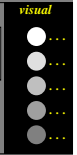
geg00-1a. Test samples: 5 and 9 colour steps, exp0=1, expg=1, inv=1, schart=0



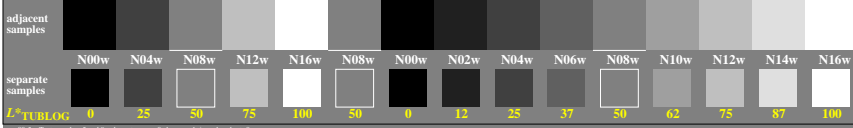
5/9 colour steps: Black N00w – Black N16w = White W 0, 125, 250, 375, 500, 625, 750, 875, 1000 Black N00w – Black N16w = White W



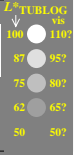
geg00-3a. Evaluation sheet: 5 and 9 colour steps, exp0=1, expg=1, inv=1, schart=1



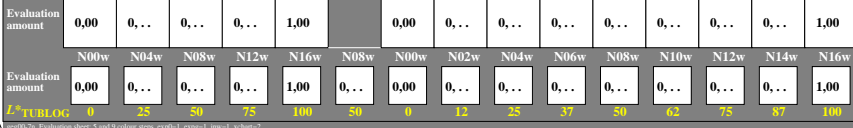
5/9 colour steps: Black N00w – Black N16w = White W 0, 125, 250, 375, 500, 625, 750, 875, 1000 Black N00w – Black N16w = White W



geg00-5a. Test samples: 5 and 9 colour steps, exp0=1, expg=1, inv=1, schart=0



5/9 colour steps: Black N00w – Black N16w = White W 0, 125, 250, 375, 500, 625, 750, 875, 1000 Black N00w – Black N16w = White W



geg00-7a. Evaluation sheet: 5 and 9 colour steps, exp0=1, expg=1, inv=1, schart=2



TUB-test chart geg0; Adjacent and separate colour samples for interval scaling, Evaluation example and evaluation of colour steps of the series N–W with 5 and 9 steps; surround mean Grey U=N08w

see similar files of the whole serie: <http://farbe.li.tu-berlin.de/geg0.htm>
 technical information: <http://farbe.li.tu-berlin.de> or <http://color.li.tu-berlin.de>

TUB registration: 20240601-geg0/geg0l0n1.txt/.ps
 application for evaluation and measurement of display or print output
 TUB material: code=thata