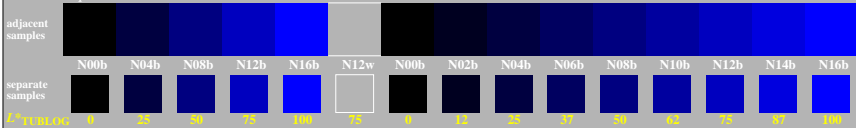


<http://farbe.li.tu-berlin.de/gei3/gei3l0n1.txt> /.ps; only vector graphic VG; start output see separate images of this page: <http://farbe.li.tu-berlin.de/gei3/gei3.htm>

0, 125, 250, 375, 500, 625, 750, 875, 1000

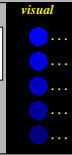
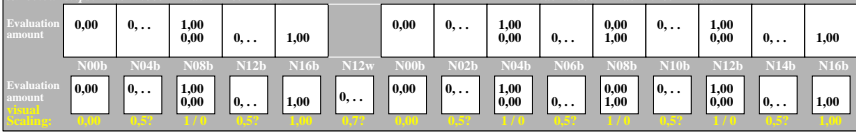
5/9 colour steps: Black N00b – Black N16b = Blue B

Black N00b – Black N16b = Blue B



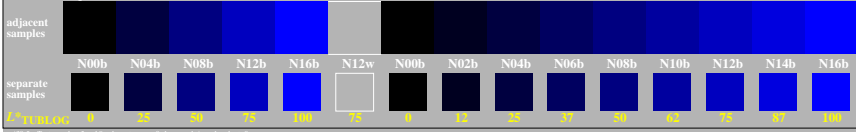
5/9 colour steps: Black N00b – Black N16b = Blue B

Black N00b – Black N16b = Blue B



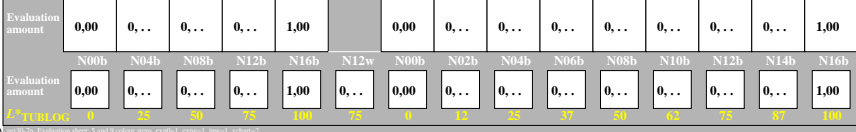
5/9 colour steps: Black N00b – Black N16b = Blue B

Black N00b – Black N16b = Blue B



5/9 colour steps: Black N00b – Black N16b = Blue B

Black N00b – Black N16b = Blue B



TUB-test chart gei3; Adjacent and separate colour samples for intervall scaling, Evaluation example and evaluation of colour steps of the series N–B with 5 and 9 steps; surround light Grey H=N12w

see similar files of the whole serie: <http://farbe.li.tu-berlin.de/gei3.htm>
technical information: <http://farbe.li.tu-berlin.de> or <http://color.li.tu-berlin.de>

TUB registration: 20240601-gei3/gei3l0n1.txt /.ps
application for evaluation and measurement of display or print output
TUB material: code=thata