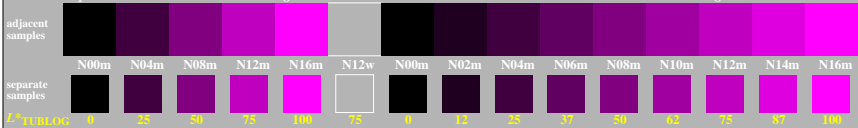


<http://farbe.li.tu-berlin.de/gei5/gei5I0n1.txt> / .ps; only vector graphic VG; start output  
 see separate images of this page: <http://farbe.li.tu-berlin.de/gei5/gei5.htm>

0, 125, 250, 375, 500, 625, 750, 875, 1000

5/9 colour steps: Black N00m – Black N16m = Magenta M

Black N00m – Black N16m = Magenta M



see similar files of the whole serie: <http://farbe.li.tu-berlin.de/gei5.htm>  
 technical information: <http://farbe.li.tu-berlin.de> or <http://color.li.tu-berlin.de>

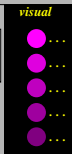
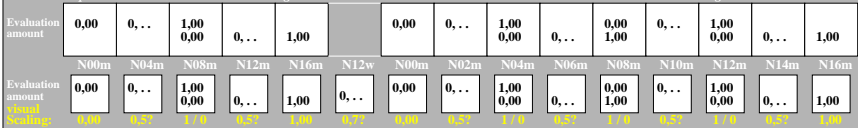
TUB registration: 20240601-gei5/gei5I0n1.txt / .ps  
 application for evaluation and measurement of display or print output

TUB material: code=thata

0, 125, 250, 375, 500, 625, 750, 875, 1000

5/9 colour steps: Black N00m – Black N16m = Magenta M

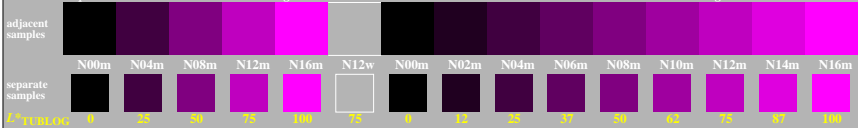
Black N00m – Black N16m = Magenta M



0, 125, 250, 375, 500, 625, 750, 875, 1000

5/9 colour steps: Black N00m – Black N16m = Magenta M

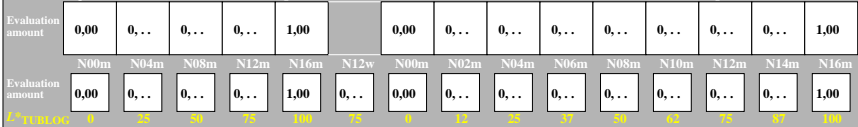
Black N00m – Black N16m = Magenta M



0, 125, 250, 375, 500, 625, 750, 875, 1000

5/9 colour steps: Black N00m – Black N16m = Magenta M

Black N00m – Black N16m = Magenta M



TUB-test chart gei5; Adjacent and separate colour samples for intervall scaling, Evaluation example and evaluation of colour steps of the series N–M with 5 and 9 steps; surround light Grey H=N12w