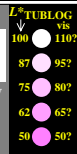
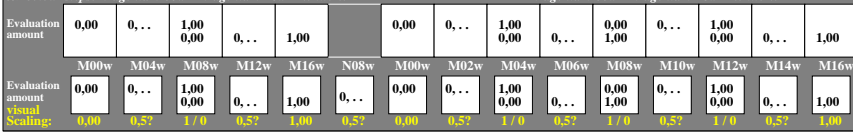


<http://farbe.li.tu-berlin.de/gej2/gej2l0n1.txt> / .ps; only vector graphic VG; start output
 see separate images of this page: <http://farbe.li.tu-berlin.de/gej2/gej2.htm>

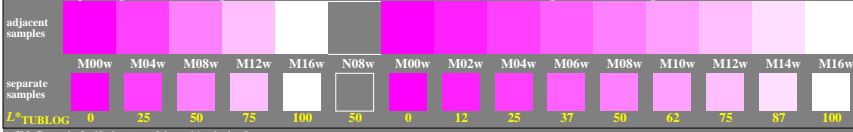
5/9 colour steps: Magenta M00w – Magenta M16w = White W 0, 125, 250, 375, 500, 625, 750, 875, 1000
 Magenta M00w – Magenta M16w = White W



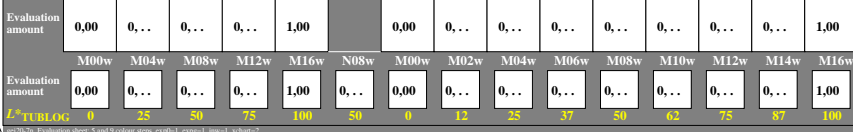
5/9 colour steps: Magenta M00w – Magenta M16w = White W 0, 125, 250, 375, 500, 625, 750, 875, 1000
 Magenta M00w – Magenta M16w = White W



5/9 colour steps: Magenta M00w – Magenta M16w = White W 0, 125, 250, 375, 500, 625, 750, 875, 1000
 Magenta M00w – Magenta M16w = White W



5/9 colour steps: Magenta M00w – Magenta M16w = White W 0, 125, 250, 375, 500, 625, 750, 875, 1000
 Magenta M00w – Magenta M16w = White W



TUB-test chart gej2; Adjacent and separate colour samples for interval scaling, Evaluation example and evaluation of colour steps ; surround mean Grey U=N08w

see similar files of the whole serie: <http://farbe.li.tu-berlin.de/gej2/gej2.htm>
 technical information: <http://farbe.li.tu-berlin.de> or <http://color.li.tu-berlin.de>

TUB registration: 20240601-gej2/gej2l0n1.txt / .ps
 application for evaluation and measurement of display or print output
 TUB material: code=thata