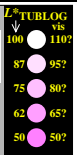
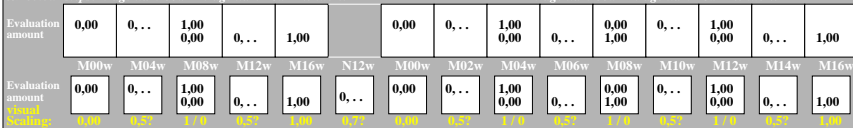


<http://farbe.li.tu-berlin.de/gej8/gej8l0n1.txt> / .ps; only vector graphic VG; start output see separate images of this page: <http://farbe.li.tu-berlin.de/gej8/gej8.htm>

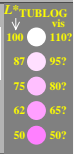
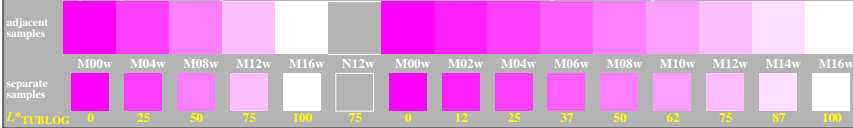
5/9 colour steps: Magenta M00w – Magenta M16w = White W Magenta M00w – Magenta M16w = White W



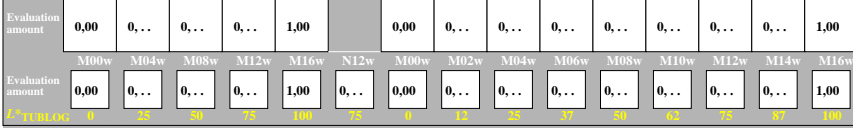
5/9 colour steps: Magenta M00w – Magenta M16w = White W Magenta M00w – Magenta M16w = White W



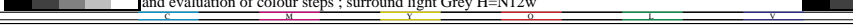
5/9 colour steps: Magenta M00w – Magenta M16w = White W Magenta M00w – Magenta M16w = White W



5/9 colour steps: Magenta M00w – Magenta M16w = White W Magenta M00w – Magenta M16w = White W



5/9 colour steps: Magenta M00w – Magenta M16w = White W Magenta M00w – Magenta M16w = White W



TUB-test chart gej8; Adjacent and separate colour samples for interval scaling, Evaluation example and evaluation of colour steps ; surround light Grey H=N12w

see similar files of the whole serie: <http://farbe.li.tu-berlin.de/gej8.htm> technical information: <http://farbe.li.tu-berlin.de> or <http://color.li.tu-berlin.de>

TUB registration: 20240601-gej8/gej8l0n1.txt / .ps application for evaluation and measurement of display or print output

TUB material: code=thata