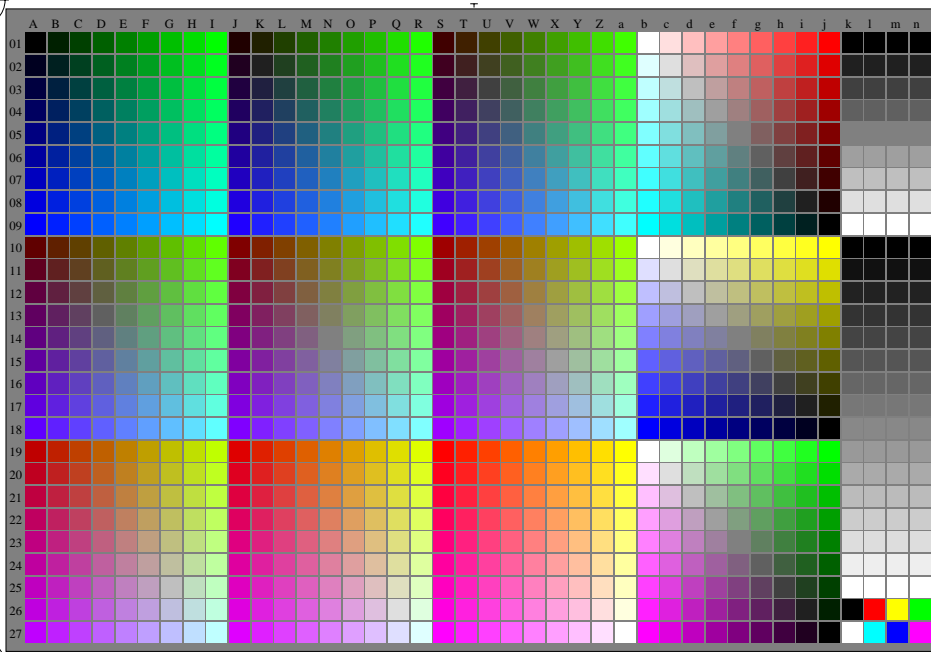


<http://farbe.li.tu-berlin.de/gek2/gek2l0n1.txt/.ps>; only vector graphic VG; start output
see separate images of this page: <http://farbe.li.tu-berlin.de/gek2/gek2.htm>

see similar files of the whole serie: <http://farbe.li.tu-berlin.de/geks.htm>
technical information: <http://farbe.li.tu-berlin.de> or <http://color.li.tu-berlin.de>



gek20-7N, 1/16

TUB-test chart gek2; Change of <http://standards.iso.org/iso/9241/306/ed-2/AE49/AE49L0NP.PDF>
The luminance is constant for achromatic colours, and increases for chromatic colours in 8 steps