

<http://farbe.li.tu-berlin.de/gem9/gem9l0n1.txt/.ps>; only vector graphic VG; start output
 see separate images of this page: <http://farbe.li.tu-berlin.de/gem9/gem9.htm>

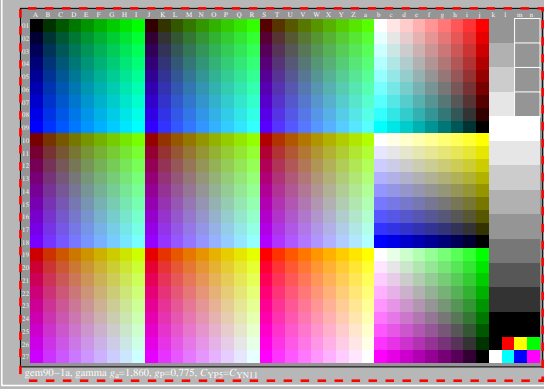
see similar files of the whole series: <http://farbe.li.tu-berlin.de/gem9.htm>
 technical information: <http://farbe.li.tu-berlin.de> or <http://color.li.tu-berlin.de>



code
 N-P₂
 N08w W08p
 N10w W06p
 N12w W04p
 N14w W02p
 N16w W00p
 N16w

TUB registration: 20240701_gem9/gem9l0n1.txt/.ps
 application for evaluation and measurement of display or print output

TUB material: code=rh4ta



gem9-1a, gamma $g_a=1,860$, $g_p=0,775$, $C_{Yp5}=C_{YN11}$

code
 N-P₂
 N08w W08p
 N10w W06p
 N12w W04p
 N14w W02p
 N16w W00p
 N16w
 N14w N14w
 N12w N12w
 N10w N10w
 N08w N08w
 N06w N06w
 N04w N04w
 N02w N02w
 N00w N00w

gem9-1a, gamma $g_a=1,140$, $g_p=0,475$, $C_{Yp1}=C_{YN15}$

TUB-test chart gem9; Test charts with 5 and 9 step colours for linearized display output, Gamma optimization for 15 ambient display reflections according to ISO 9241-306; with image; $0,48 < \gamma_{rel} < 2,1$