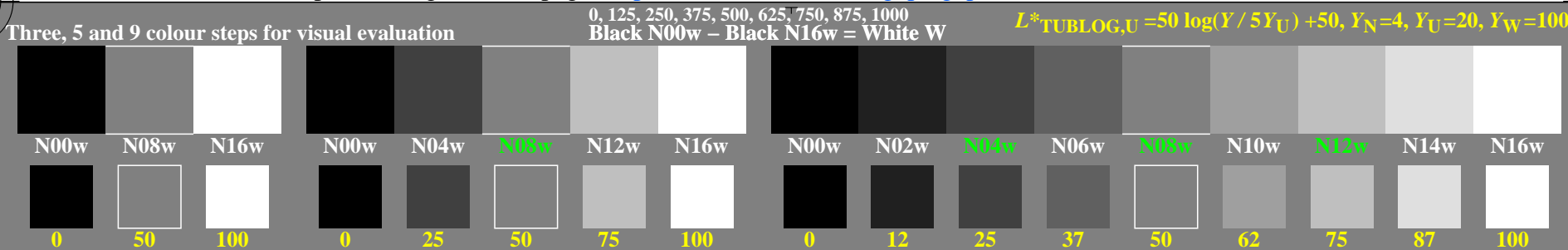
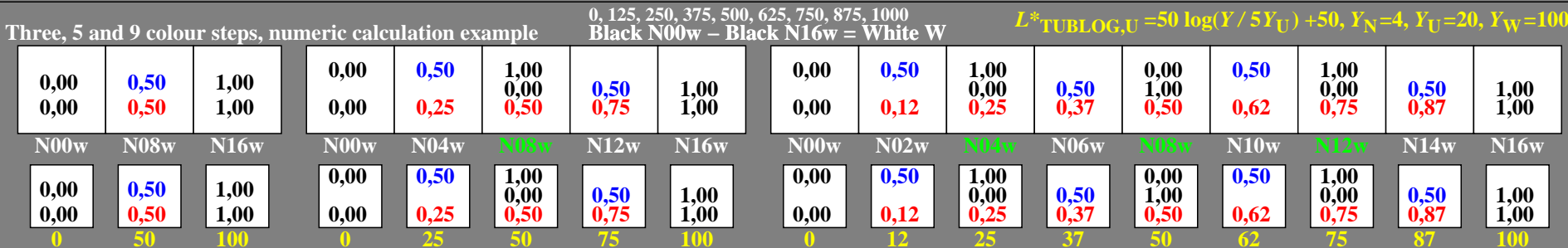


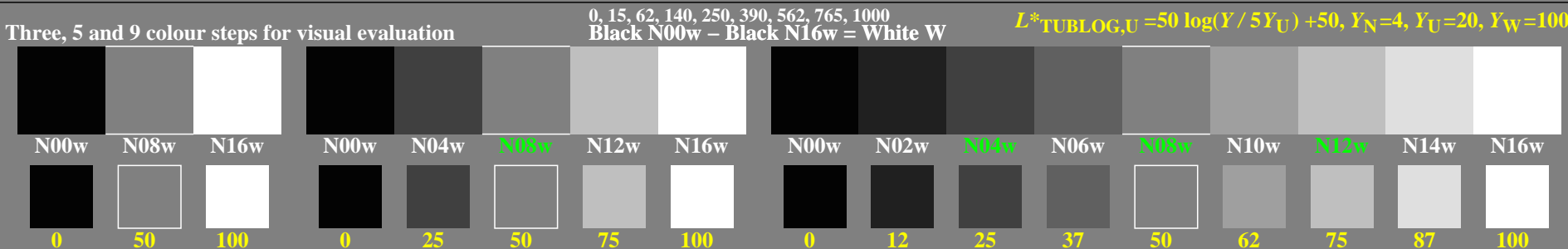
<http://farbe.li.tu-berlin.de/gep3/gep310np.pdf> / .ps; only vector graphic VG; start output
 see separate images of this page: <http://farbe.li.tu-berlin.de/gep3/gep3.htm>



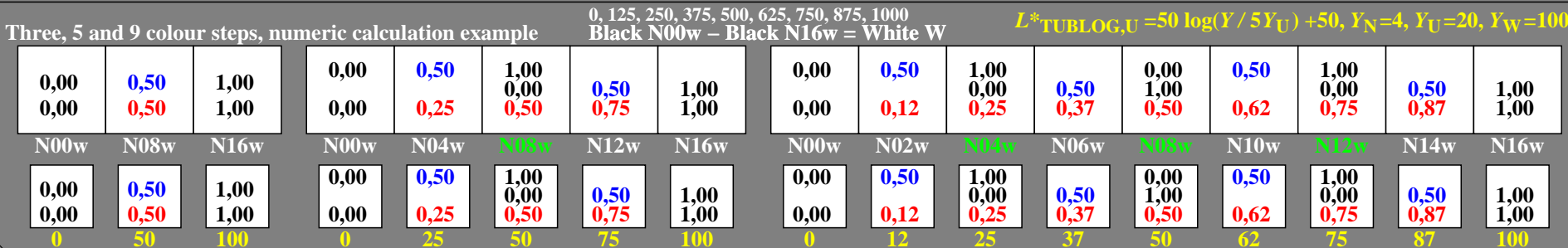
gep30-1n, Test samples: 3, 5 and 9 colour steps, greu=0.500, expu=1.000, expa=1.000



gep30-3n, Test samples: 3, 5 and 9 colour steps, greu=0.500, expu=1.000, expa=1.000



gep30-5n, Test samples: 3, 5 and 9 colour steps, greu=0.500, expu=2.000, expa=2.000



gep30-7n, Test samples: 3, 5 and 9 colour steps, greu=0.500, expu=1.000, expa=1.000

TUB-test chart gep3; Linearization code in FrameFile (FF) and Gamma (one line) in four files
 inverse Gamma values 1 and 0,5 of the series N–W with 3, 5 and 9 steps; evaluation linear

see similar files of the whole serie: <http://farbe.li.tu-berlin.de/geps.htm>
 technical information: <http://farbe.li.tu-berlin.de> or <http://color.li.tu-berlin.de>

TUB registration: 20240701-gep3/gep310np.pdf / .ps
 application for evaluation and measurement of display or print output

TUB material: code=rh4ta