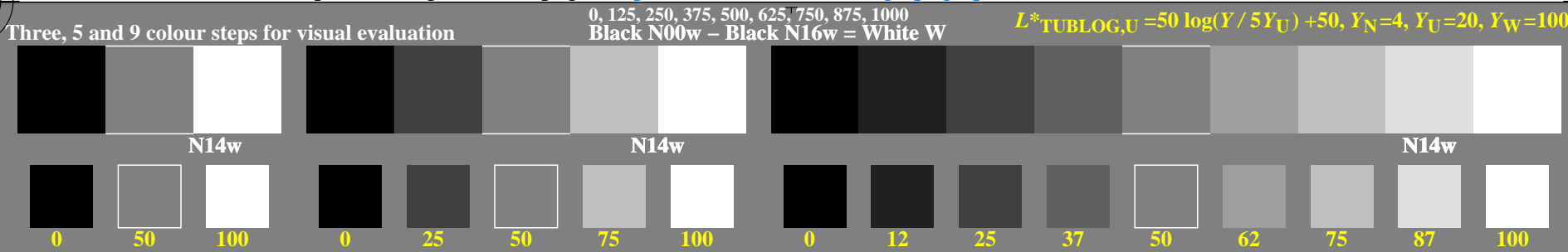
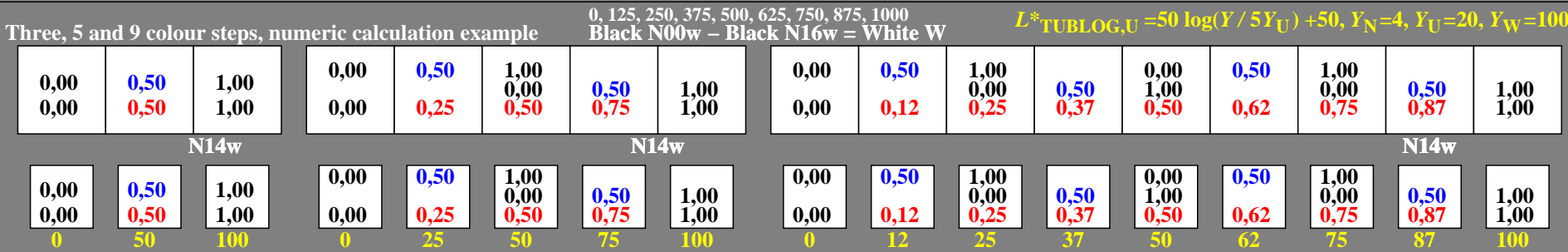


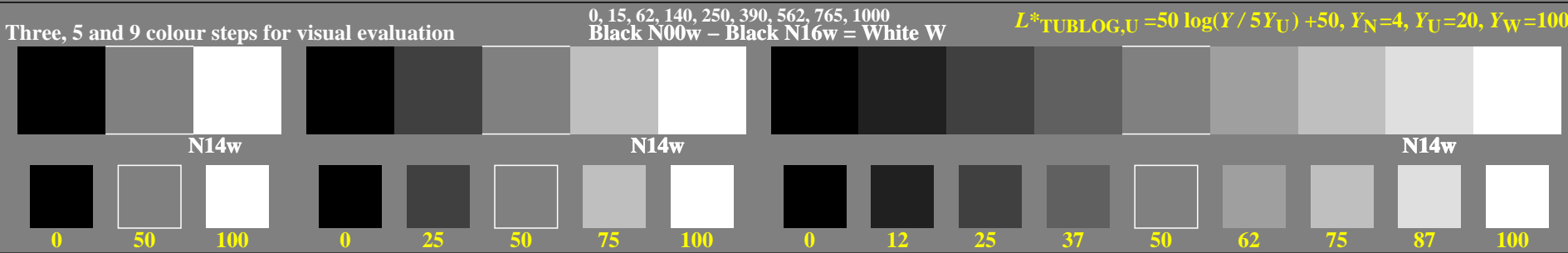
<http://farbe.li.tu-berlin.de/geq3/geq310np.pdf> / .ps; only vector graphic VG; start output
 see separate images of this page: <http://farbe.li.tu-berlin.de/geq3/geq3.htm>



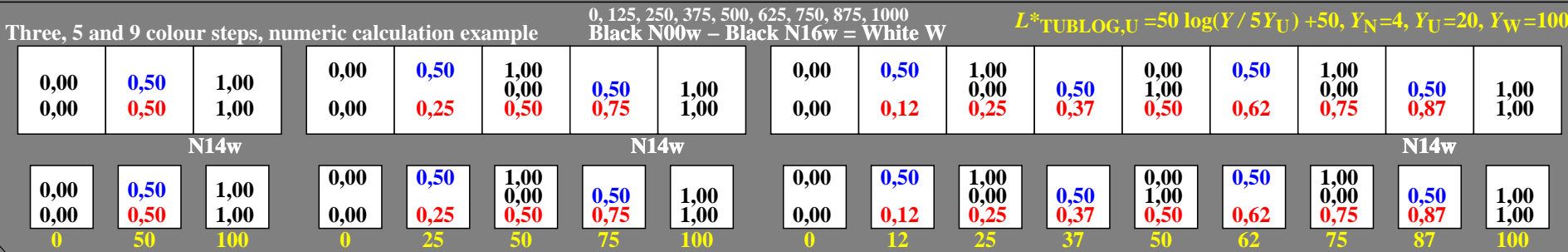
geq30-1n, Test samples: 3, 5 and 9 colour steps, greu=0.500, expu=1.000, expa=1.000



geq30-3n, Test samples: 3, 5 and 9 colour steps, greu=0.500, expu=1.000, expa=1.000



geq30-5n, Test samples: 3, 5 and 9 colour steps, greu=0.500, expu=2.000, expa=2.000



geq30-7n, Test samples: 3, 5 and 9 colour steps, greu=0.500, expu=1.000, expa=1.000

TUB-test chart geq3; File-(F)-Linearization code *IMR-0000F* and Gamma (71 lines) in four files
 inverse Gamma values 1 and 0,5 of the series N–W with 3, 5 and 9 steps; evaluation linear

see similar files of the whole serie: <http://farbe.li.tu-berlin.de/geqs.htm>
 technical information: <http://farbe.li.tu-berlin.de> or <http://color.li.tu-berlin.de>

TUB registration: 20240701-geq3/geq310np.pdf / .ps
 application for evaluation and measurement of display or print output
 TUB material: code=rh4ta