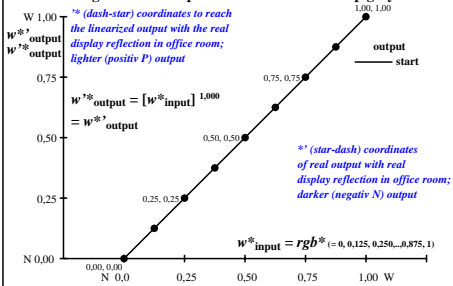
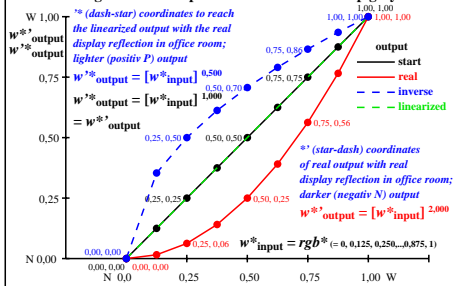


Colour management for output linearization of a 9 step grey scale

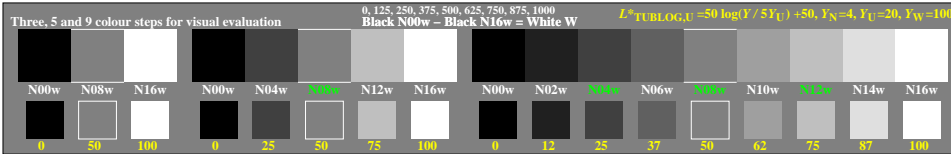


ger50-3n

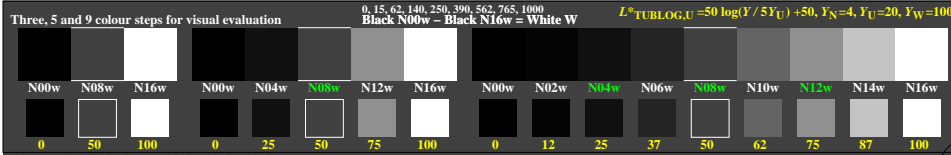
Colour management for output linearization of a 9 step grey scale



ger51-3n



ger50-5a, Test samples: 3, 5 and 9 colour steps, greu=0.500, expu=1.000, expu=1.000



ger50-7a, Test samples: 3, 5 and 9 colour steps, greu=0.500, expu=2.000, expu=2.000

TUB-test chart ger5; This is an example text for many applications

see similar files of the whole serie: <http://farbe.li.tu-berlin.de/gers.htm>
 technical information: <http://farbe.li.tu-berlin.de> or <http://color.li.tu-berlin.de>

TUB registration: 20240701-ger5/ger510n1.txt /ps
 application for evaluation and measurement of display or print output

TUB material: code=thata