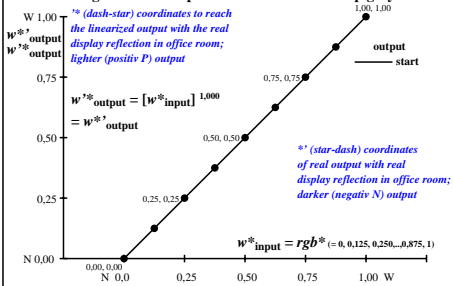
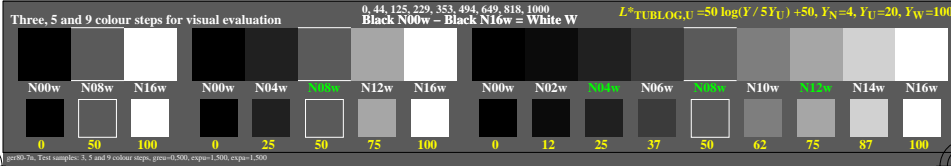
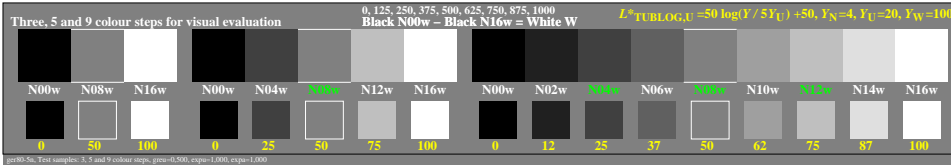
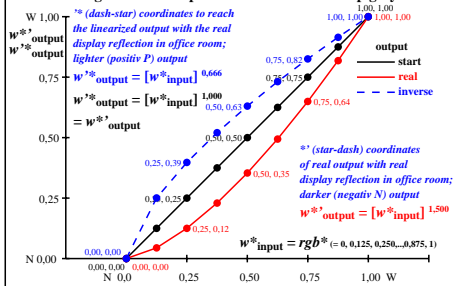


Colour management for output linearization of a 9 step grey scale



Colour management for output linearization of a 9 step grey scale



TUB-test chart ger8; This is an example text for many applications

see similar files of the whole serie: <http://farbe.li.tu-berlin.de/gers.htm>
 technical information: <http://farbe.li.tu-berlin.de> or <http://color.li.tu-berlin.de>

TUB registration: 20240701-ger8/ger810n1.txt /ps
 application for evaluation and measurement of display or print output

TUB material: code=thata