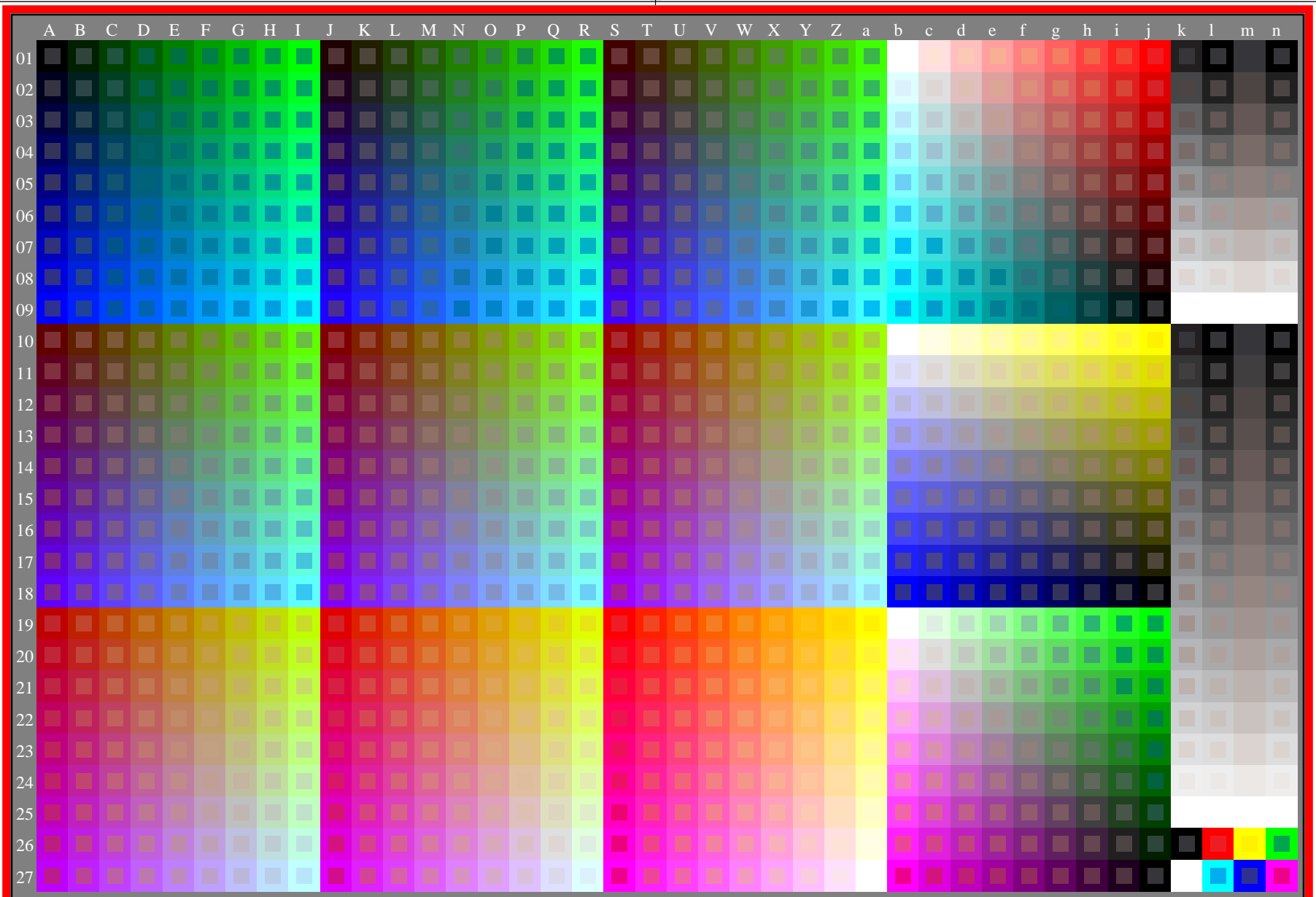


<http://farbe.li.tu-berlin.de/get7/get7l0na.txt> /.ps; only vector graphic VG; start output  
compare TUB-test chart for  $\gamma_{rel}=1,000$ , <http://color.li.tu-berlin.de/eem5/eem5l0np.pdf>, page 1/1

see gamma software and links to ISO-test charts <http://color.li.tu-berlin.de/eem1/eem1l0np.pdf>  
technical information: <http://farbe.li.tu-berlin.de> or <http://color.li.tu-berlin.de>

TUB registration: 20230615-get7/get7l0na.txt /.ps  
application for evaluation and measurement of display or print output

TUB material: code=rh4ta



get70-7n, gamma values:  $g_{rel}=1,000$ ,  $g_{IEC\_sRGB}=2,4$ ,  $g_a=2,400$ ,  $rgb^*$  &  $w^*$  data, 1080 colours

TUB-test chart get7; Test charts with 9 step colour series for ergonomic linearized display output  
Gamma optimization for 15 ambient display reflections according to ISO 9241-306;  $\gamma_{rel}=1,000$

