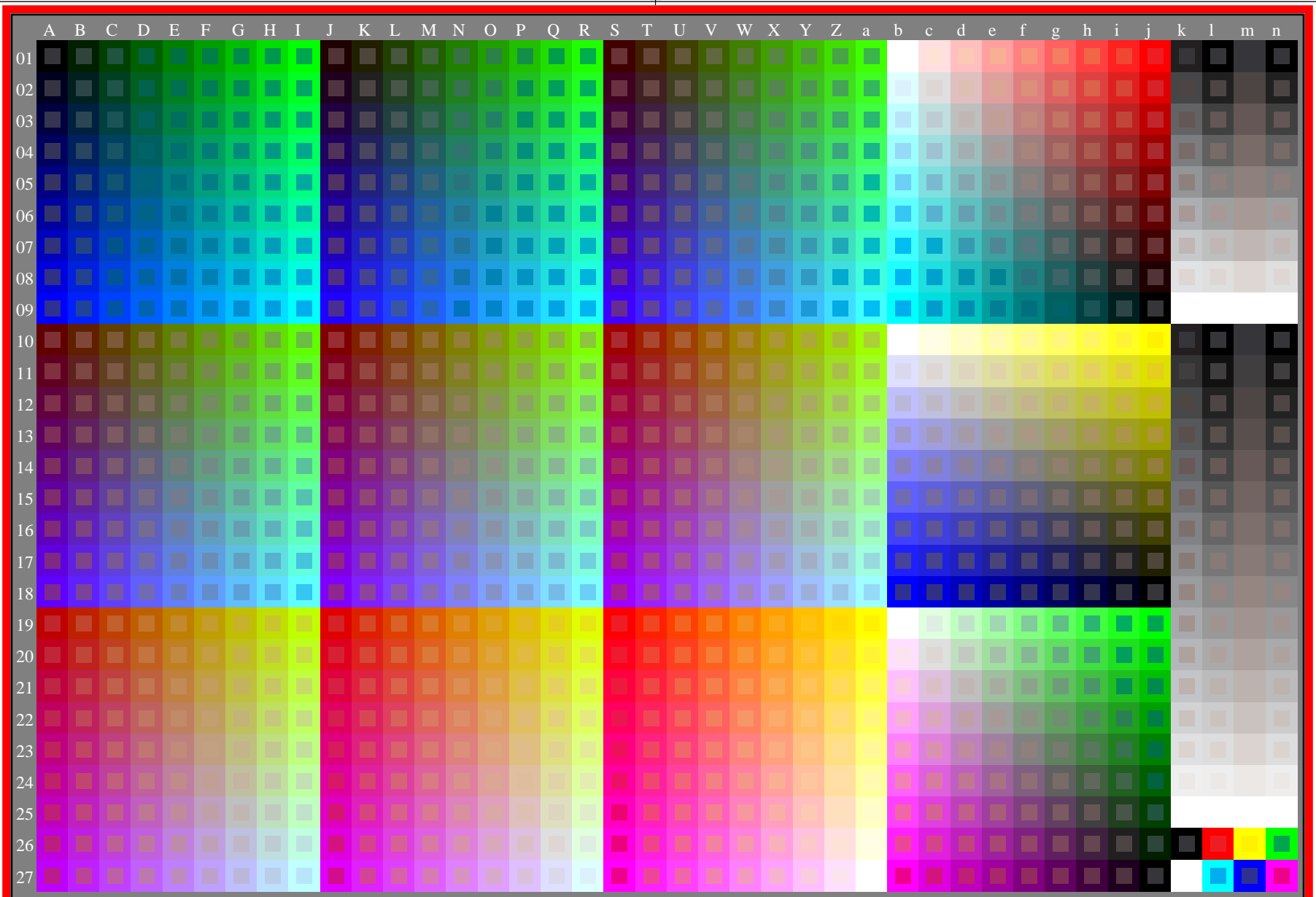


see gamma software and links to ISO-test charts <http://color.li.tu-berlin.de/eem1/eem1l0np.pdf>
technical information: <http://farbe.li.tu-berlin.de> or <http://color.li.tu-berlin.de>

TUB registration: 20230615-get7/get7l0np.pdf /.ps
application for evaluation and measurement of display or print output

TUB material: code=rh4ta



get70-7n, gamma values: $g_{rel}=1,000$, $g_{IEC_sRGB}=2,4$, $g_a=2,400$, rgb^* & w^* data, 1080 colours