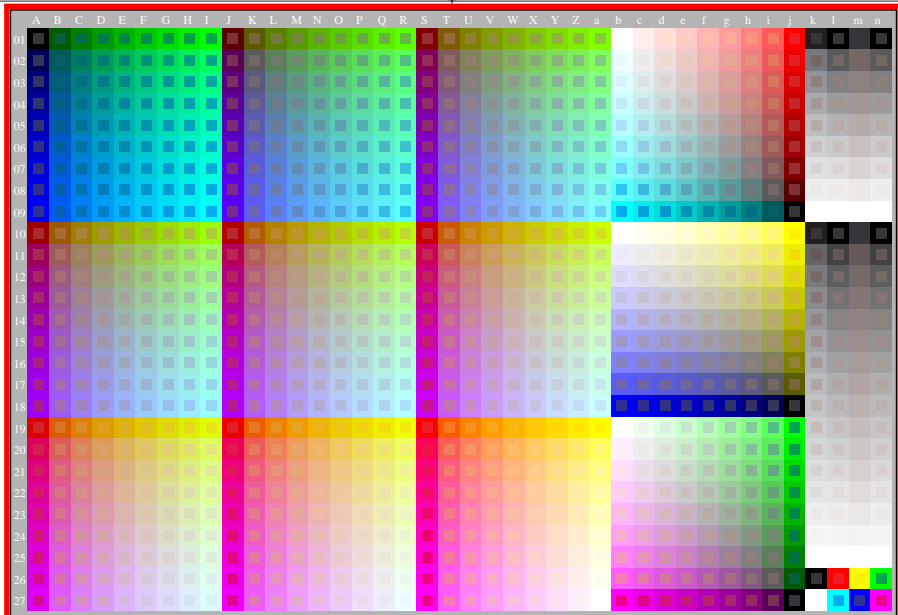


see gamma software and links to ISO-test charts <http://color.li.tu-berlin.de/eem1/eem1l0np.pdf>
technical information: <http://farbe.li.tu-berlin.de> or <http://color.li.tu-berlin.de>

TUB registration: 20230615-get9/get9l0n1.txt /.ps
application for evaluation and measurement of display or print output

TUB material: code=thata



get90-7n