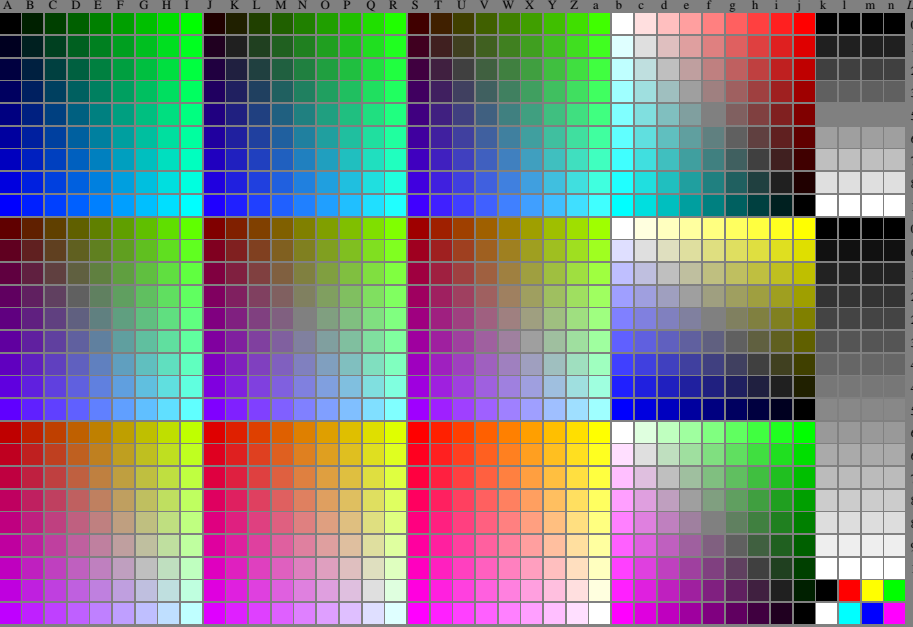


<http://farbe.li.tu-berlin.de/geu4/geu4l0n1.txt/.ps>; only vector graphic VG; start output
see separate images of this page: <http://farbe.li.tu-berlin.de/geu4/geu4.htm>



see similar files of the whole serie: <http://farbe.li.tu-berlin.de/geus.htm>
technical information: <https://farbe.li.tu-berlin.de/> or <http://color.li.tu-berlin.de>



$L^*_{F0.04/2}$
0,00
12,50
25,00
37,50
50,00
62,50
75,00
87,50
100,00
0,00
6,66
13,33
20,00
26,66
33,33
40,00
46,66
53,33
60,00
66,66
73,33
80,00
86,66
93,33
100,00

TUB registration: 20240201-geu4/geu4l0n1.txt/.ps
application for evaluation and measurement of display or print output
TUB material: code=rhadrta



geu40-7N, 1/16, colorm=0, kk=0, nk=0, xchart=2, kx(kk)=1.0

TUB-test chart geu4; Change of <http://standards.iso.org/iso/9241/306/ed-2/AE49/AE49L0NP.PDF>
Grey sample lightness decreases by a factor $R=1.0$, no change of RGBCMY, all values on next page

