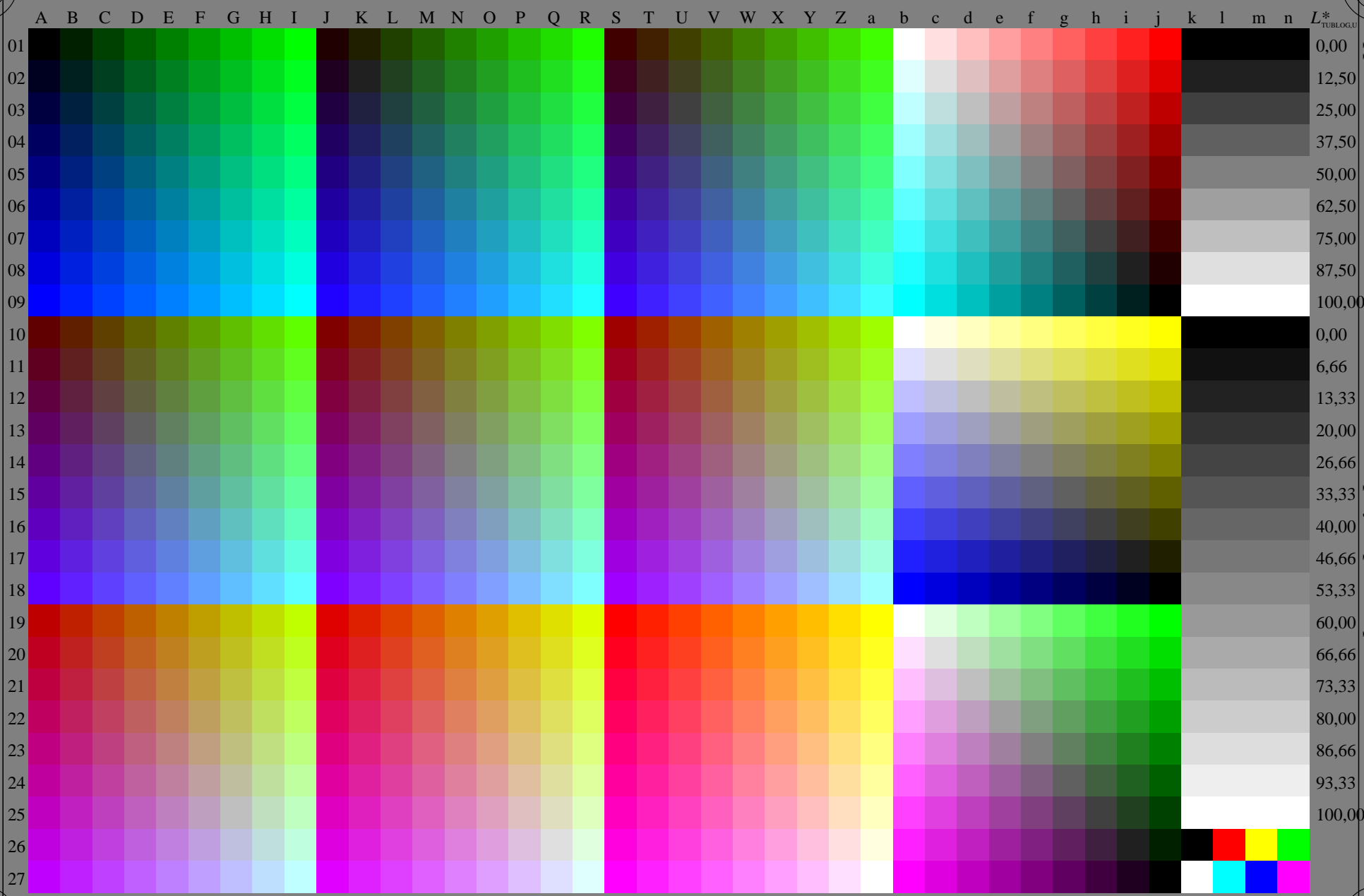


see similar files of the whole serie: <http://farbe.li.tu-berlin.de/geus.htm>
technical information: <http://farbe.li.tu-berlin.de> or <http://color.li.tu-berlin.de>



TUB registration: 20240201-geu6/geu6l0np.pdf /.ps
application for evaluation and measurement of display or print output
TUB material: code=rh4ta

geu60-7N, 1/16, colorm=0, kk=0, nk=0, xchartl=2, kx(kk)=1.0

A B C D E F G H I J K L M N O P Q R S T U V W X Y Z a b c d e f g h i j k l m n L*
10.00

Table with 28 columns (A-L*) and 28 rows (01-27). Each cell contains a numerical value representing color data for the geu60-7N color chart. The values are arranged in a grid that shows a gradient of colors across the chart.

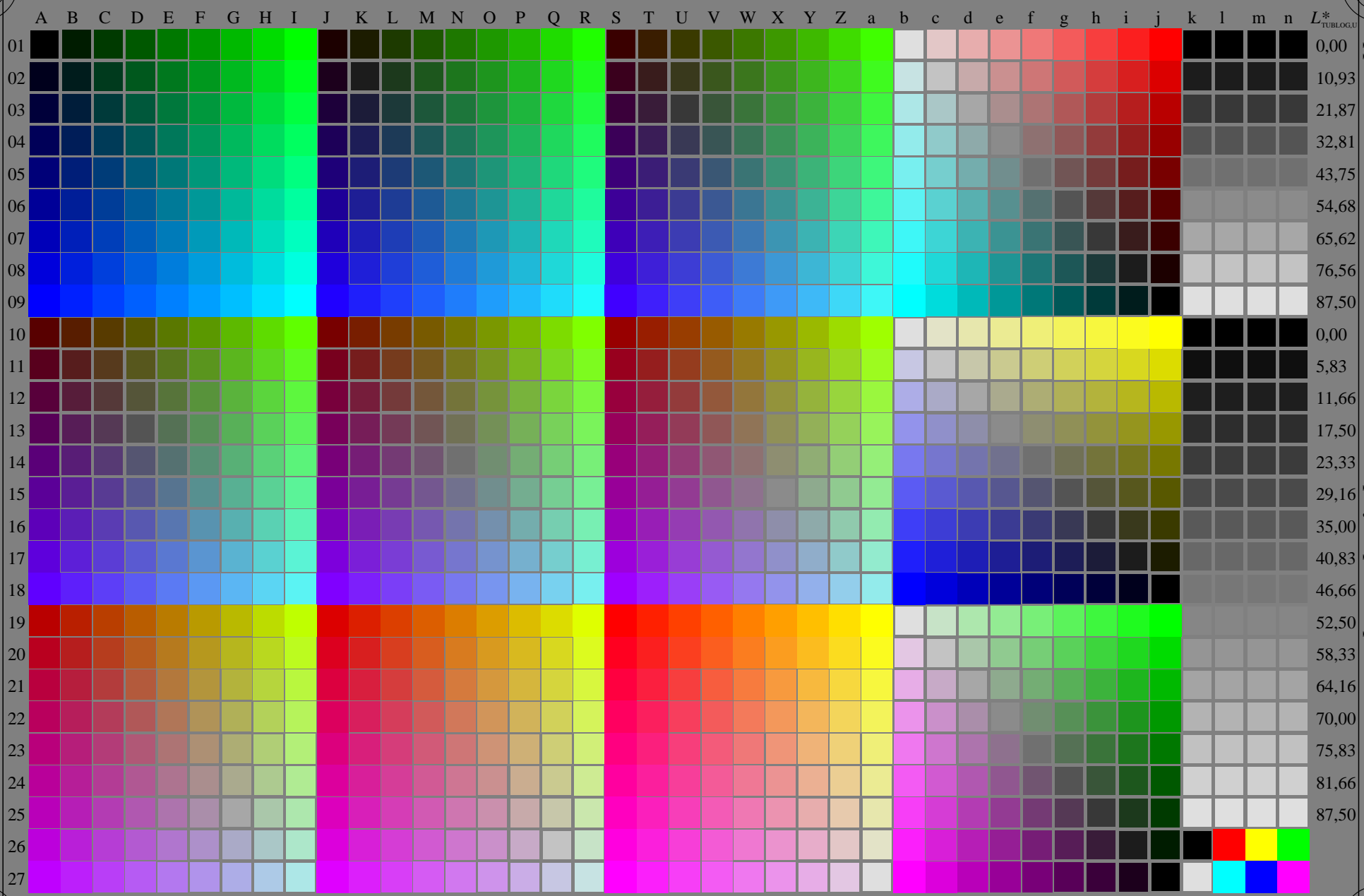
geu60-7N, 2/16, color=0, kk=0, nk=1, xchart=3, kx(kk)=1.0

TUB test chart geu6; Change of http://standards.info.org/924/306/ed-2/AE49/AE49L0NP.PDF
Grey sample lightness decreases by a factor R=1.020, no change of RGBCMY, all values on next page

see similar files of the whole series: http://farbe.li.tu-berlin.de/geus.htm
technical information: http://farbe.li.tu-berlin.de OR http://color.li.tu-berlin.de

TUB registration: 2024020-geu6/geu610np.pdf / .ps
Application for evaluation and measurement of display or print output
TUB material: code=thafata

see similar files of the whole serie: <http://farbe.li.tu-berlin.de/geus.htm>
technical information: <http://farbe.li.tu-berlin.de> or <http://color.li.tu-berlin.de>



TUB registration: 20240201-geu6/geu6l0np.pdf / .ps
application for evaluation and measurement of display or print output
TUB material: code=rha4ta

geu60-7N, 3/16, colorm=0, kk=1, nk=0, xchartl=2, kx(kk)=0.875

TUB-test chart geu6; Change of <http://standards.iso.org/iso/9241/306/ed-2/AE49/AE49L0NP.PDF>
Grey sample lightness decreases by a factor $R=0,875$, no change of RGBCMY, all values on next page

1=000200=F0

see similar files of the whole series: http://farbe.li.tu-berlin.de/geus.htm
technical information: http://farbe.li.tu-berlin.de or http://color.li.tu-berlin.de

Table with 26 columns (A-Z) and 26 rows (01-26). Each cell contains a 26-character alphanumeric string representing color data for a specific row and column intersection.

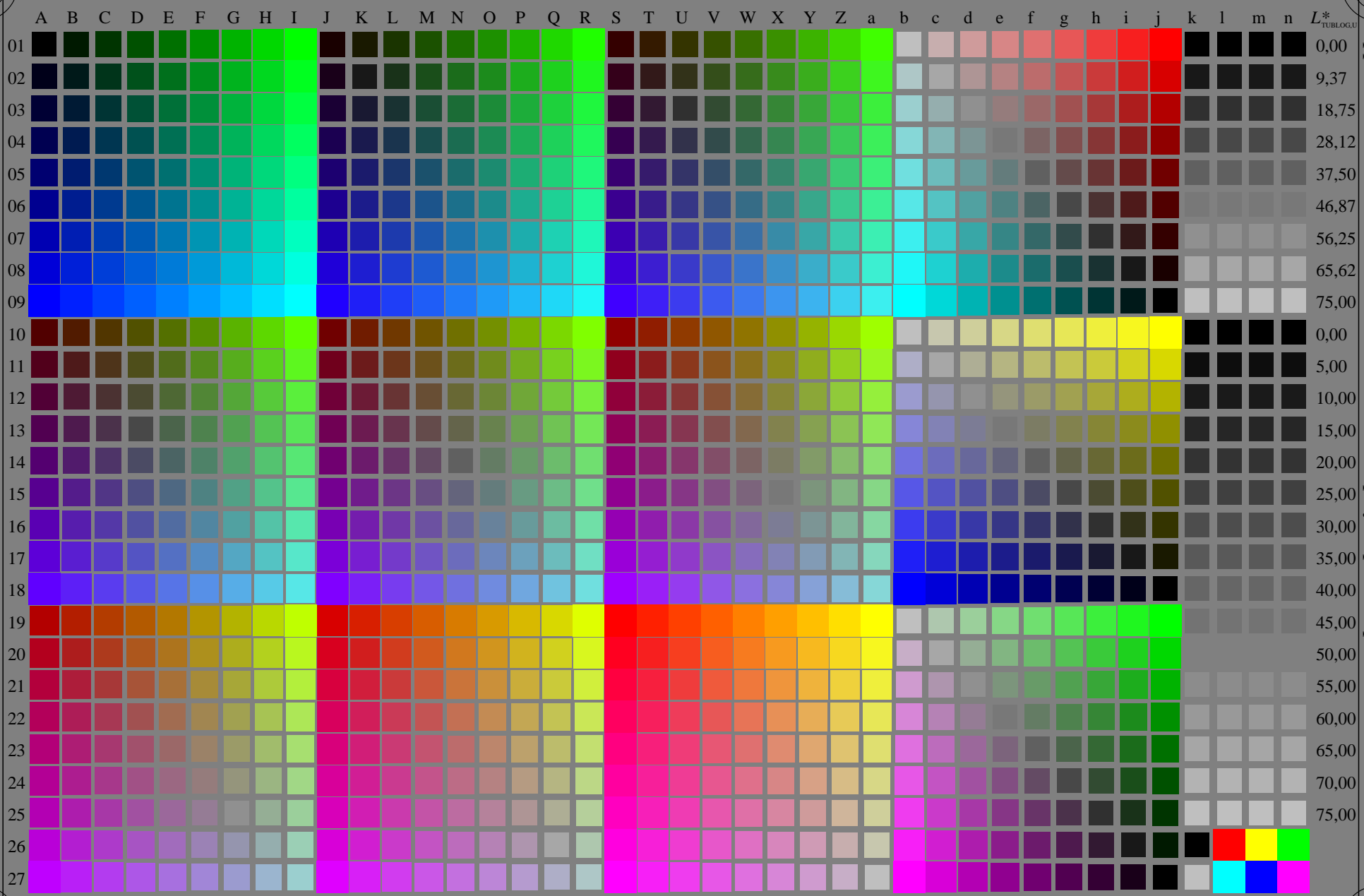
TUBLOGU
Application for evaluation and measurement of display or print output
TRB material: code=trifata

geu60-7N, 4/16, colorm=0, kk=1, nk=1, xchart=3, kx(kk)=0-875

TU test chart geu6; Change of http://standards.iso.org/9241/306/ed-2/AE49/AE49LNP.PDF

Full range lightness decreases by a factor R=0.875, no change of RGBCMY, all values on next page

see similar files of the whole serie: <http://farbe.li.tu-berlin.de/geus.htm>
technical information: <http://farbe.li.tu-berlin.de> or <http://color.li.tu-berlin.de>



TUB registration: 20240201-geu6/geu6l0np.pdf / .ps
application for evaluation and measurement of display or print output
TUB material: code=rh4ta

geu60-7N, 5/16, colorm=0, kk=2, nk=0, xchartl=2, kx(kk)=0.75

A B C D E F G H I J K L M N O P Q R S T U V W X Y Z a b c d e f g h i j k l m n L* TUBLOGU

Table with 26 columns (A-L*) and 26 rows (01-27). Each cell contains a numerical value representing color data for the 'geu6' series. The values are organized in a grid format, with some cells containing multiple values separated by spaces or commas.

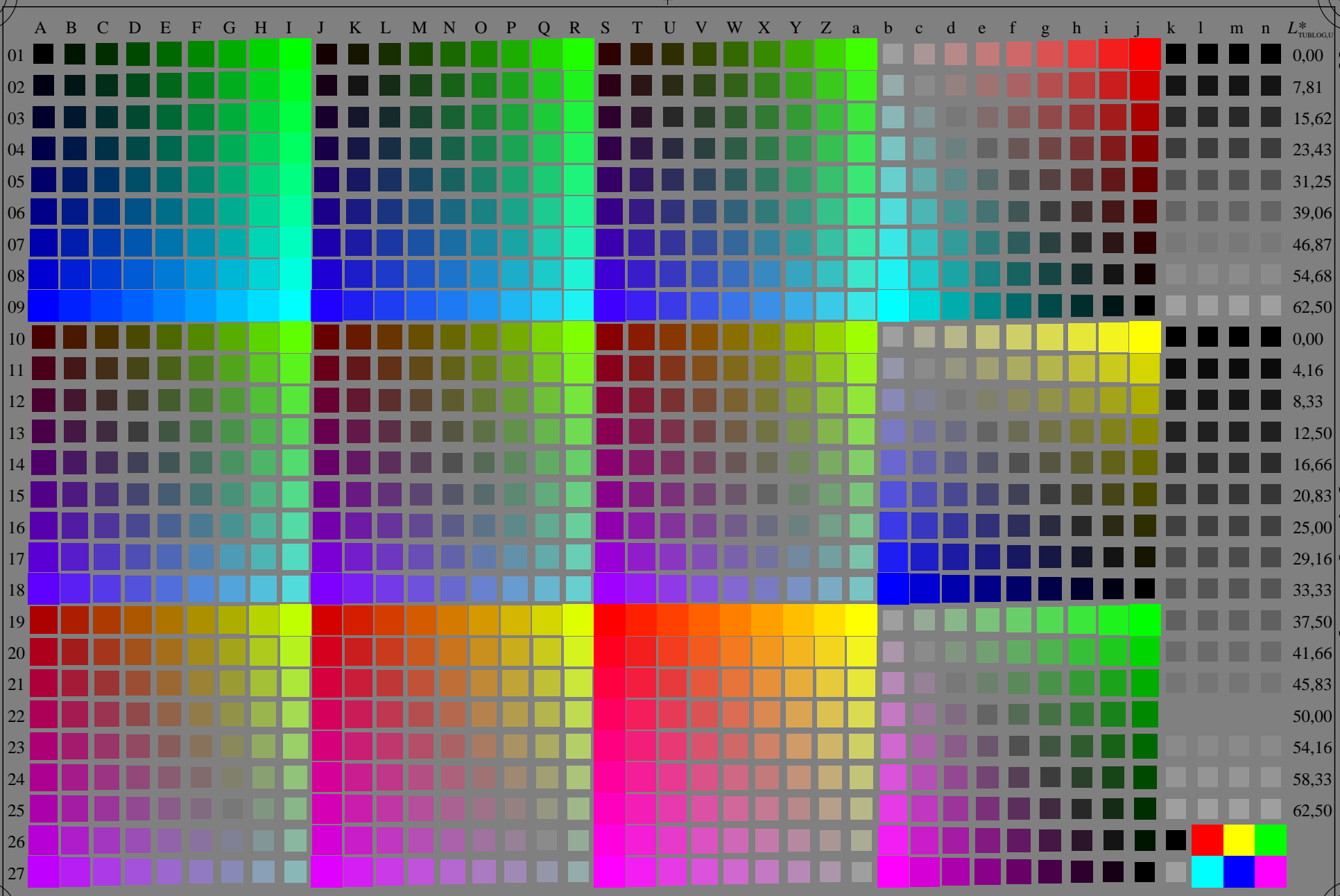
TUB test chart geu6; Change of http://standards.iso.org/924/3/06/ed-2/AE49/AE49L/ANP.PDF

Grey sample lightness decreases by a factor R=0.750, no change of RGBCMY, all values on next page

see similar files of the whole serie: http://farbe.li.u-tu-berlin.de/geus.htm technical information: http://farbe.li.u-tu-berlin.de/or http://color.li.u-tu-berlin.de

TUB registration: 2022-06-10 -geu6/geu601np.pdf / ps application for evaluation and measurement of display or print output TUB material: code=thifata

see similar files of the whole serie: <http://farbe.li.tu-berlin.de/geus.htm>
technical information: <http://farbe.li.tu-berlin.de> or <http://color.li.tu-berlin.de>



TUB registration: 20240201-geu6/geu6l0np.pdf / .ps
application for evaluation and measurement of display or print output
TUB material: code=rha4ta

geu60-7N, 7/16, colorm=0, kk=3, nk=0, xchartl=2, kx(kk)=0.625

TUB-test chart geu6; Change of <http://standards.iso.org/iso/9241/306/ed-2/AE49/AE49L0NP.PDF>
Grey sample lightness decreases by a factor $R=0,625$, no change of RGBCMY, all values on next page

1=000600=F0

A B C D E F G H I J K L M N O P Q R S T U V W X Y Z a b c d e f g h i j k l m n L* Tubulocolor

Table with 26 columns (A-L*) and 26 rows (01-26). Each cell contains a 26-character alphanumeric string representing color data for the geu6 color space. The strings are organized in a grid, with each row corresponding to a primary color and each column to a secondary color.

see similar files of the whole series: http://farbe.li.it-berlin.de/geus.htm technical information: http://farbe.li.it-berlin.de/or http://color.li.it-berlin.de/

TUB registration: 2024/020-10-geu6/geu601npp.pdf / ps application for evaluation and measurement of display or print output TUB material: code=thiata

geu60-7N, 8/16, colorm=0, kk=3, nk=1, xchart=3, kx(kk)=0.625

