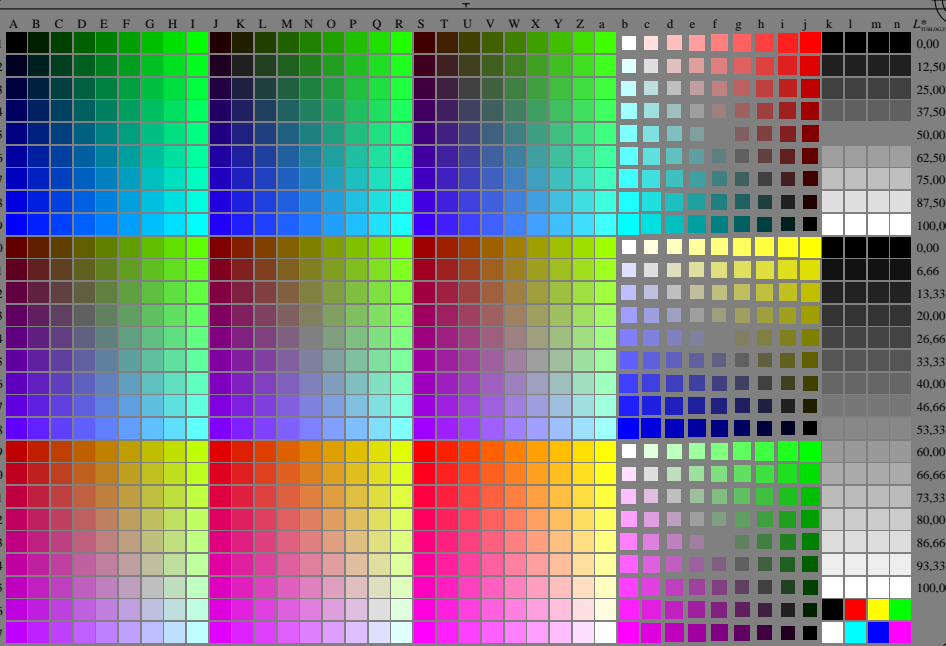


<http://farbe.li.tu-berlin.de/geu7/geu7l0n1.txt/.ps>; only vector graphic VG; start output  
see separate images of this page: <http://farbe.li.tu-berlin.de/geu7/geu7.htm>

see similar files of the whole serie: <http://farbe.li.tu-berlin.de/geus.htm>  
technical information: <http://farbe.li.tu-berlin.de> or <http://color.li.tu-berlin.de>



TUB registration: 20240201-geu7/geu7l0n1.txt/.ps  
application for evaluation and measurement of display or print output  
TUB material: code=thada

geu70-7N, 1/16, colorm=0, kk=0, nk=0, xchart=2, kx(kk)=1.0

TUB-test chart geu7; Change of <http://standards.iso.org/iso/9241/306/ed-2/AE49/AE49L0NP.PDF>  
Grey sample lightness decreases by a factor  $R=1.0$ , no change of RGBCMY, all values on next page