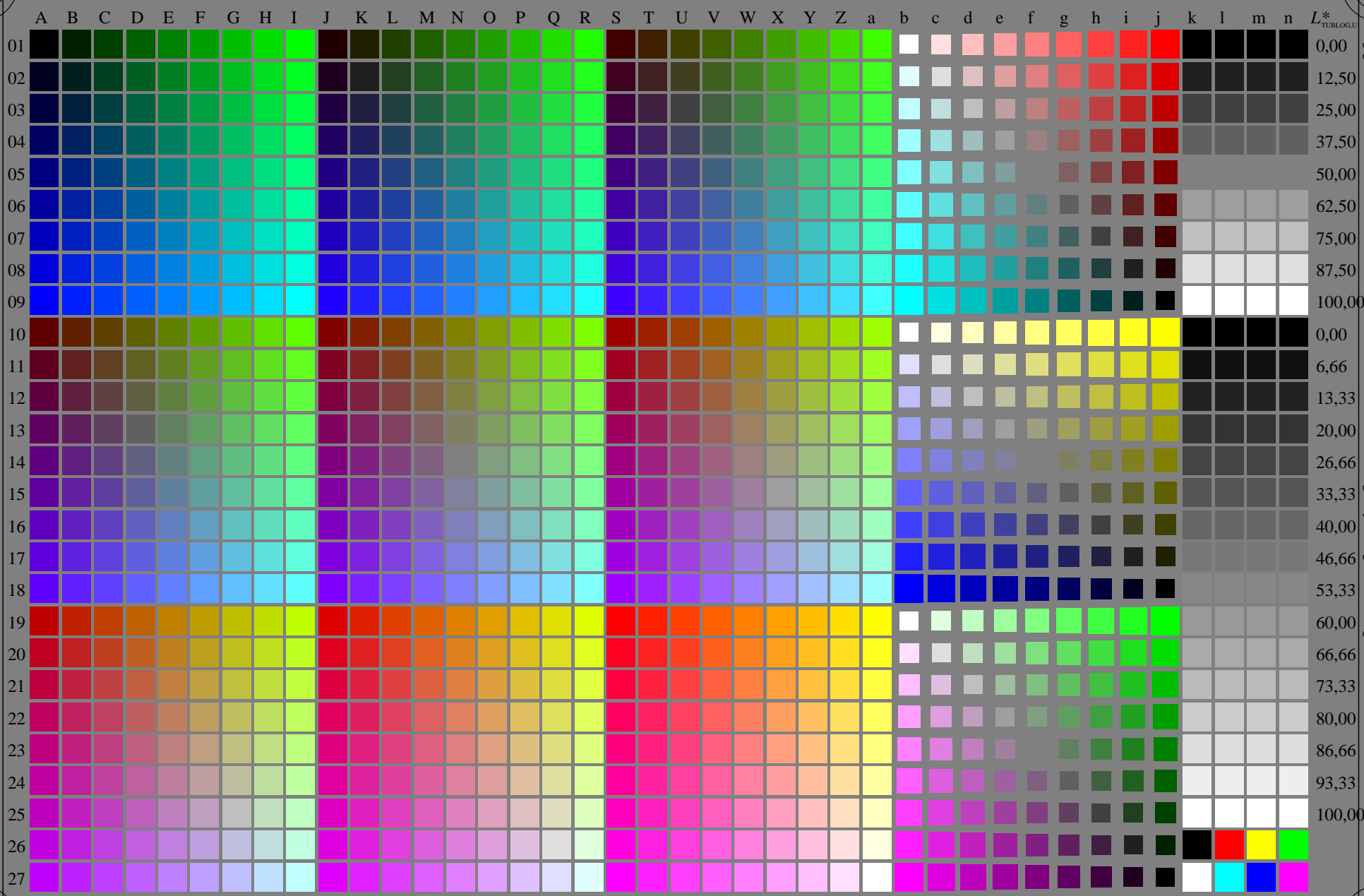


<http://farbe.li.tu-berlin.de/geu7/geu7l0np.pdf> / .ps; only vector graphic VG; start output
see separate images of this page: <http://farbe.li.tu-berlin.de/geu7/geu7.htm>

see similar files of the whole serie: <http://farbe.li.tu-berlin.de/geus.htm>
technical information: <http://farbe.li.tu-berlin.de> or <http://color.li.tu-berlin.de>



TUB registration: 20240201-geu7/geu7l0np.pdf / .ps
application for evaluation and measurement of display or print output
TUB material: code=rha4ta

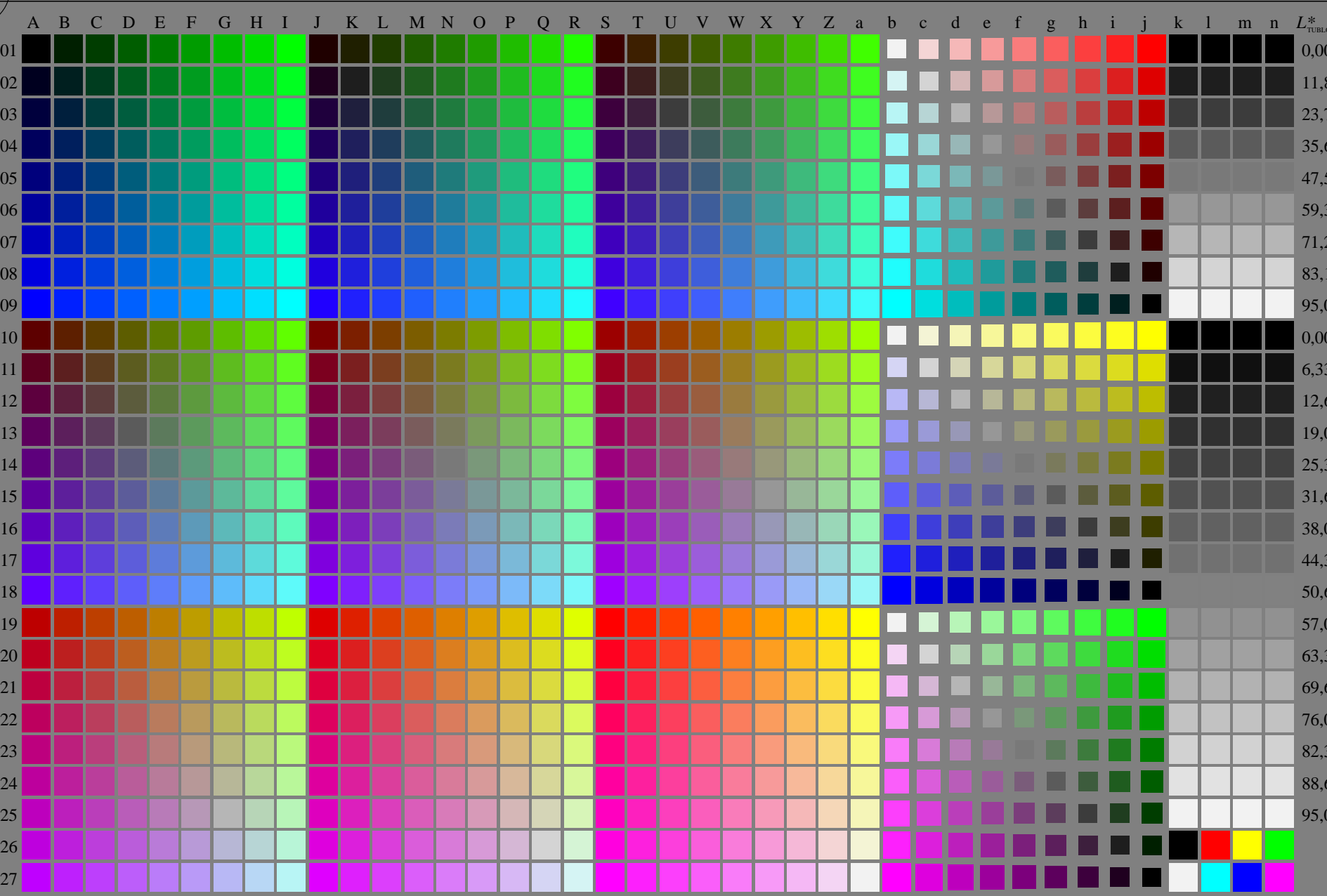
geu70-7N, 1/16, colorm=0, kk=0, nk=0, xchartl=2, kx(kk)=1.0

TUB-test chart geu7; Change of <http://standards.iso.org/iso/9241/306/ed-2/AE49/AE49L0NP.PDF>
Grey sample lightness decreases by a factor $R=1.0$, no change of RGBCMY, all values on next page

<http://farbe.li.tu-berlin.de/geu7/geu7l0np.pdf> / .ps; only vector graphic VG;
see separate images of this page: <http://farbe.li.tu-berlin.de/geu7/geu7.htm>

see similar files of the whole serie: <http://farbe.li.tu-berlin.de/geus.htm>
technical information: <http://farbe.li.tu-berlin.de> or <http://color.li.tu-berlin.de>

TUB registration: 20240201-geu7/geu7l0np.pdf / .ps
application for evaluation and measurement of display or print output
TUB material: code=rha4ta



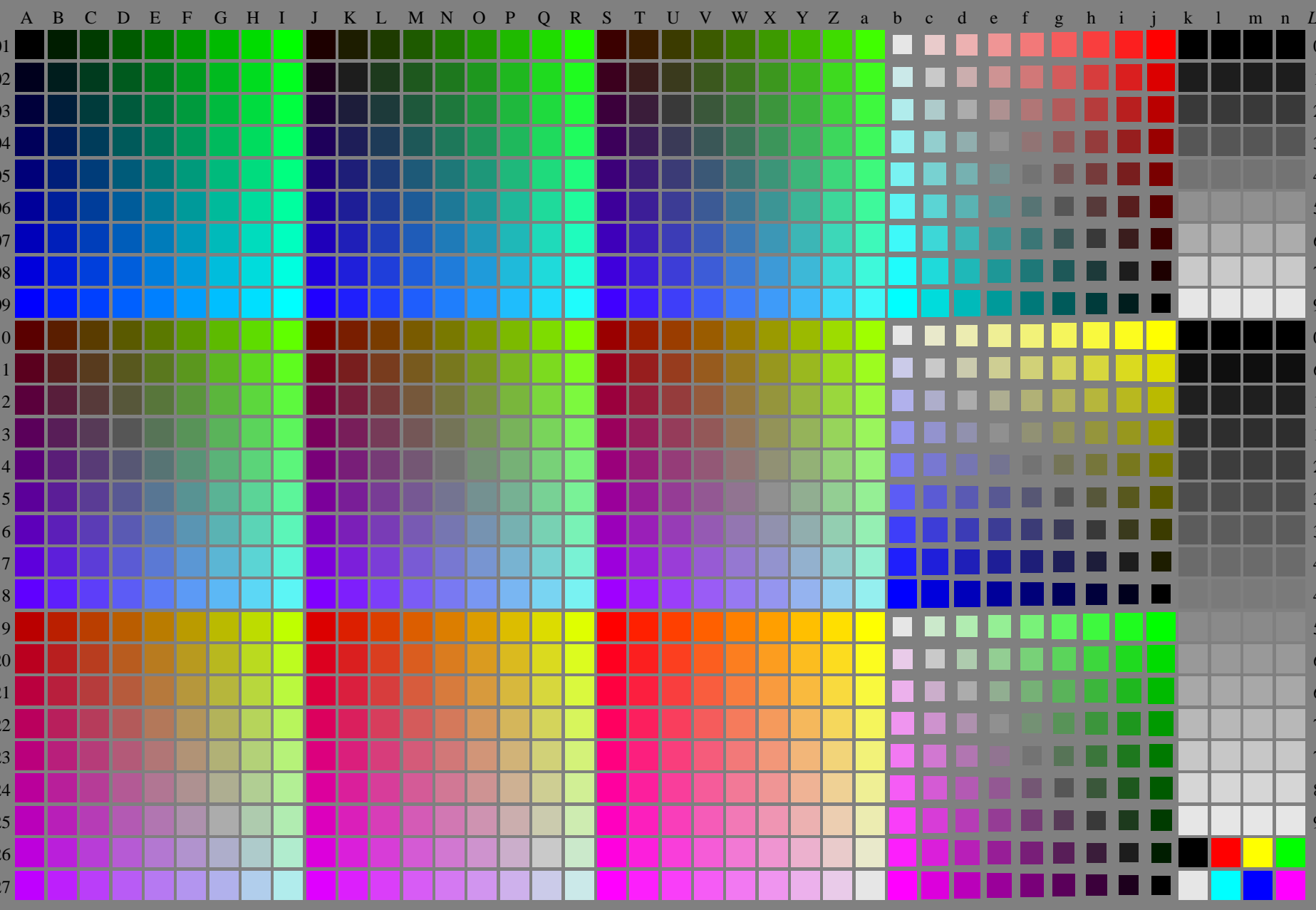
geu70-7N, 3/16, colorm=0, kk=1, nk=0, xchartl=2, kx(kk)=0.95

TUB-test chart geu7; Change of <http://standards.iso.org/iso/9241/306/ed-2/AE49/AE49L0NP.PDF>
Grey sample lightness decreases by a factor $R=0.95$, no change of RGBCMY, all values on next page

1=000200=F0

<http://farbe.li.tu-berlin.de/geu7/geu7l0np.pdf> / .ps; only vector graphic VG;
see separate images of this page: <http://farbe.li.tu-berlin.de/geu7/geu7.htm>

see similar files of the whole serie: <http://farbe.li.tu-berlin.de/geus.htm>
technical information: <http://farbe.li.tu-berlin.de> or <http://color.li.tu-berlin.de>



TUB registration: 20240201-geu7/geu7l0np.pdf / .ps
application for evaluation and measurement of display or print output
TUB material: code=rha4ta

geu70-7N, 5/16, colorm=0, kk=2, nk=0, xchartl=2, kx(kk)=0.9

TUB-test chart geu7; Change of <http://standards.iso.org/iso/9241/306/ed-2/AE49/AE49L0NP.PDF>
Grey sample lightness decreases by a factor $R=0.9$, no change of RGBCMY, all values on next page

1=000400=F0

<http://farbe.li.tu-berlin.de/geu7/geu7120np.pdf>; /ps; only vector graphic /G;
 see separate images of this page: <http://farbe.li.tu-berlin.de/geu7/geu7.htm>

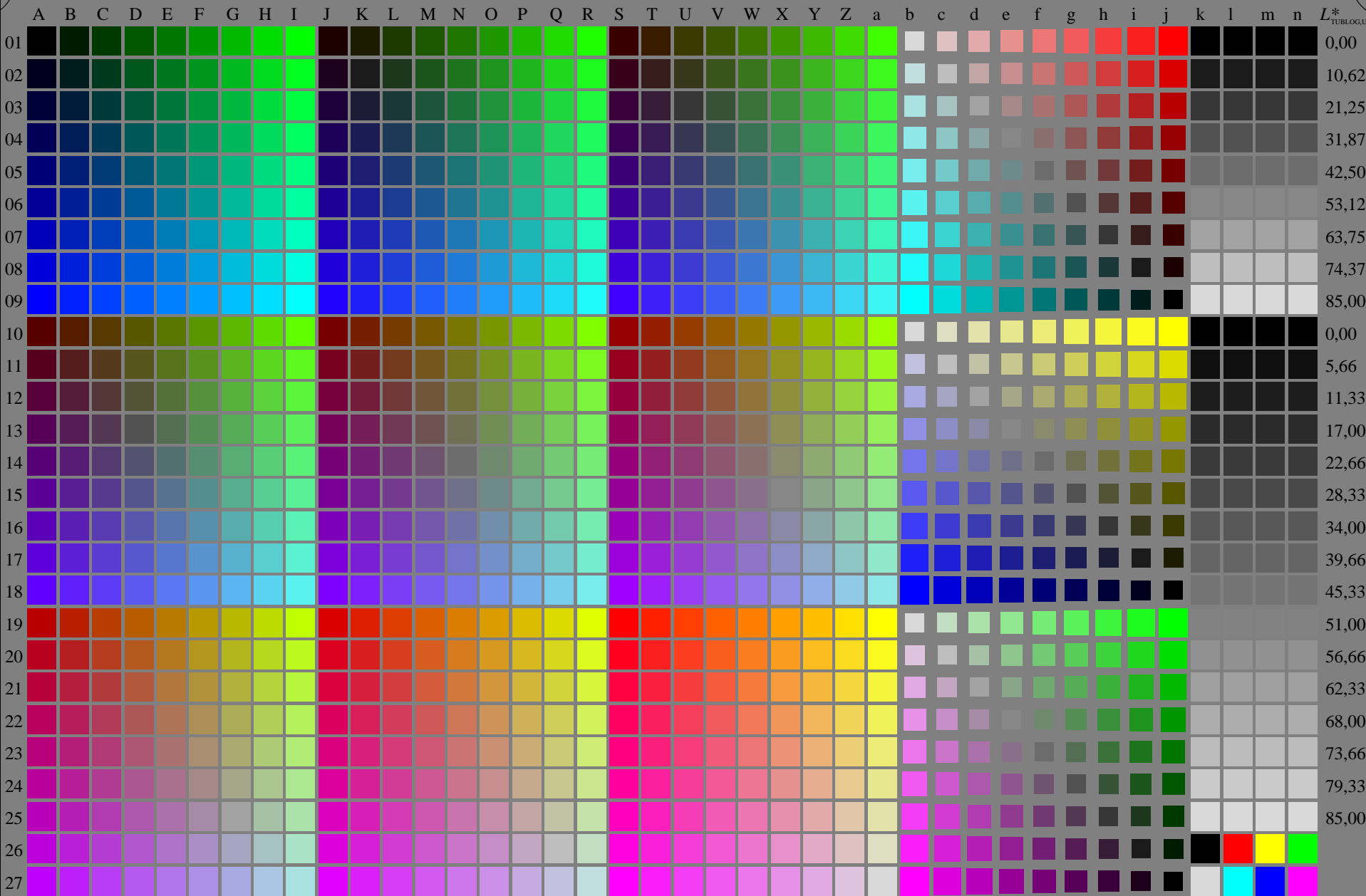
	A	B	C	D	E	F	G	H	I	J	K	L	M	N	O	P	Q	R	S	T	U	V	W	X	Y	Z	a	b	c	d	e	f	g	h	i	j	k	l	m	n	L*																																																																								
01	0000 001	0000 001	0018 001	0027 001	0036 001	0045 001	0054 001	0063 001	0072 001	0081 001	0090 001	0099 001	0108 001	0117 001	0126 001	0135 001	0144 001	0153 001	0162 001	0171 001	0180 001	0189 001	0198 001	0207 001	0216 001	0225 001	0234 001	0243 001	0252 001	0261 001	0270 001	0279 001	0288 001	0297 001	0306 001	0315 001	0324 001	0333 001	0342 001	0351 001	0360 001	0369 001	0378 001	0387 001	0396 001	0405 001	0414 001	0423 001	0432 001	0441 001	0450 001	0459 001	0468 001	0477 001	0486 001	0495 001	0504 001	0513 001	0522 001	0531 001	0540 001	0549 001	0558 001	0567 001	0576 001	0585 001	0594 001	0603 001	0612 001	0621 001	0630 001	0639 001	0648 001	0657 001	0666 001	0675 001	0684 001	0693 001	0702 001	0711 001	0720 001	0729 001	0738 001	0747 001	0756 001	0765 001	0774 001	0783 001	0792 001	0801 001	0810 001	0819 001	0828 001	0837 001	0846 001	0855 001	0864 001	0873 001	0882 001	0891 001	0900 001	0909 001	0918 001	0927 001	0936 001	0945 001	0954 001	0963 001	0972 001	0981 001	0990 001	0999 001	1000 001

see similar files of the whole serie: <http://farbe.li.tu-berlin.de>
 technical information: <http://farbe.li.tu-berlin.de/ftp://color.li.tu-berlin.de>

TUB registration: 2024-04-01
 application for evaluation and measurement of display or print output
 TUB materia: code=thata

<http://farbe.li.tu-berlin.de/geu7/geu7l0np.pdf> / .ps; only vector graphic VG;
 see separate images of this page: <http://farbe.li.tu-berlin.de/geu7/geu7.htm>

see similar files of the whole serie: <http://farbe.li.tu-berlin.de/geus.htm>
 technical information: <http://farbe.li.tu-berlin.de> or <http://color.li.tu-berlin.de>



TUB registration: 20240201-geu7/geu7l0np.pdf / .ps
 application for evaluation and measurement of display or print output
 TUB material: code=rha4ta

geu70-7N, 7/16, colorm=0, kk=3, nk=0, xchartl=2, kx(kk)=0.85

TUB-test chart geu7; Change of <http://standards.iso.org/iso/9241/306/ed-2/AE49/AE49L0NP.PDF>
 Grey sample lightness decreases by a factor $R=0.85$, no change of RGB/CMY, all values on next page

1=000600-E0

Large grid of numbers and characters, likely a barcode or data matrix, with a grid of 28 rows and 100 columns.

<http://farbe.li.tu-berlin.de/geu7/geu711Onp.pdf>; only vector graphic **VG**;
see separate images of this page: <http://farbe.li.tu-berlin.de/geu7/geu7.htm>

see similar files of the whole serie: <http://farbe.li.tu-berlin.de>
technical information: <http://farbe.li.tu-berlin.de/ftp/color.li.tu-berlin.de>

TUB registration: 20240201-geu7/geu711Onp.pdf / ps
application for evaluation and measurement of display or print output

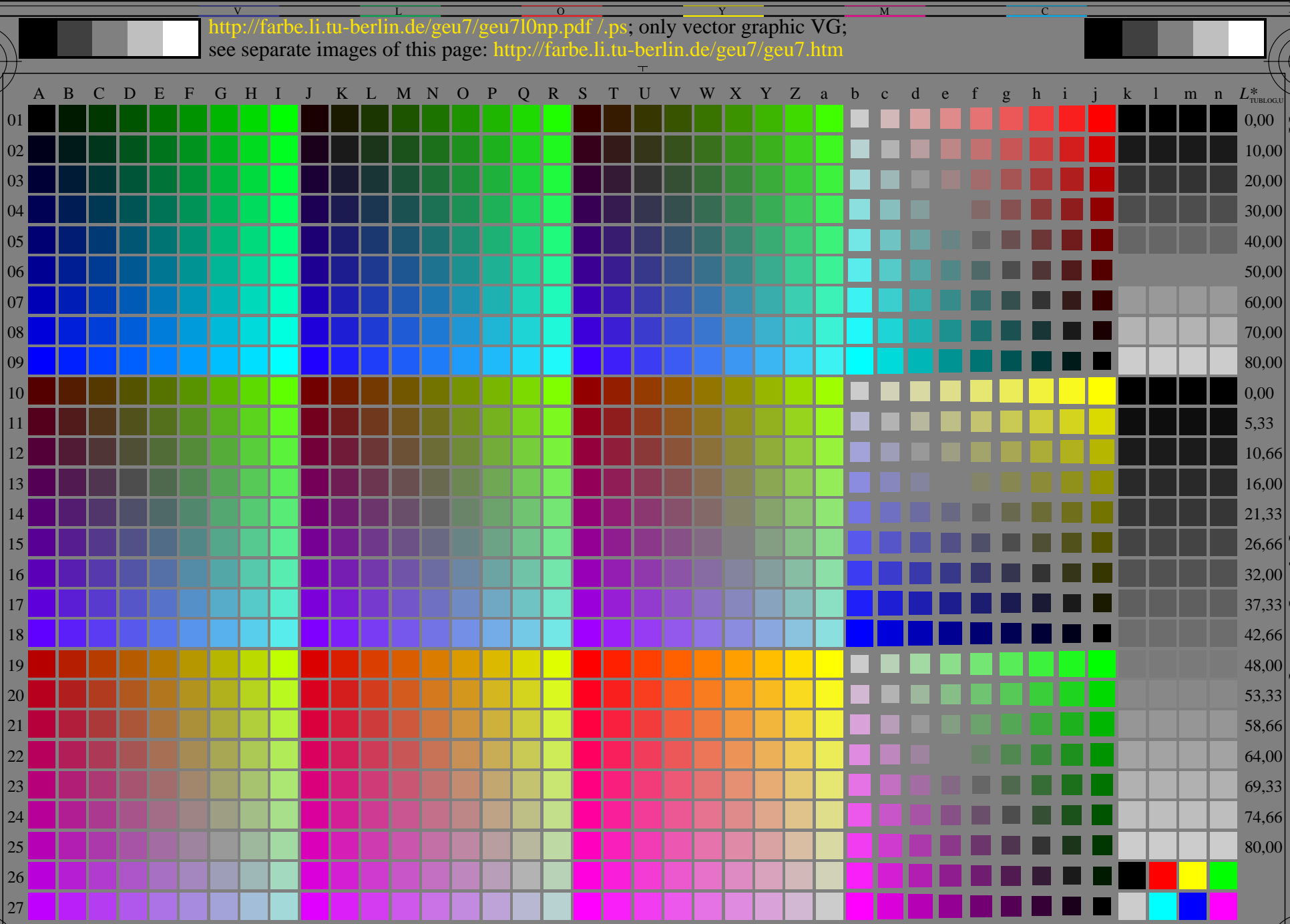
TUB materia: code=fihaata

TUB registration: 20240201-geu7/geu711Onp.pdf / ps
application for evaluation and measurement of display or print output
TUB materia: code=fihaata

geu70-7N, 8/16, colorm=0, k=3, nk=1, xchart=13, kx(k)=0.85
TUB test chart geu7 / Change of <http://standards.iso.org/iso/9242/306/e2/AE49/AE49LONP.pdf>
Grey sample lightness decreases by a factor R=0.85, no change of RGBCMY, all values on next page

<http://farbe.li.tu-berlin.de/geu7/geu7l0np.pdf> / .ps; only vector graphic VG;
see separate images of this page: <http://farbe.li.tu-berlin.de/geu7/geu7.htm>

see similar files of the whole serie: <http://farbe.li.tu-berlin.de/geus.htm>
technical information: <http://farbe.li.tu-berlin.de> or <http://color.li.tu-berlin.de>



TUB registration: 20240201-geu7/geu7l0np.pdf / .ps
application for evaluation and measurement of display or print output
TUB material: code=rha4ta

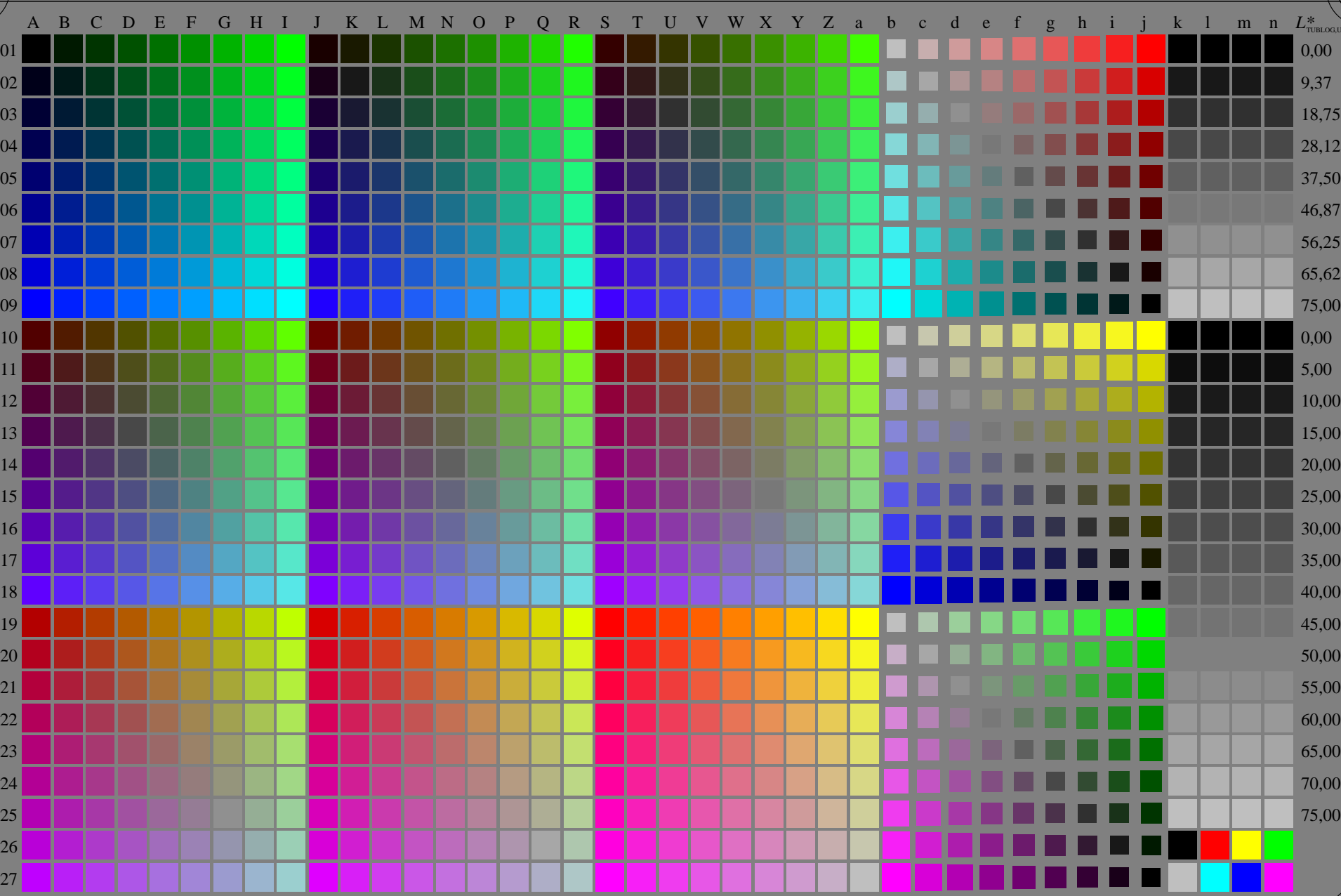
geu70-7N, 9/16, colorm=0, kk=4, nk=0, xchartl=2, kx(kk)=0.8

TUB-test chart geu7; Change of <http://standards.iso.org/iso/9241/306/ed-2/AE49/AE49L0NP.PDF>
Grey sample lightness decreases by a factor $R=0.8$, no change of RGBCMY, all values on next page

1=000800=F0

<http://farbe.li.tu-berlin.de/geu7/geu7l0np.pdf> /.ps; only vector graphic VG;
see separate images of this page: <http://farbe.li.tu-berlin.de/geu7/geu7.htm>

see similar files of the whole serie: <http://farbe.li.tu-berlin.de/geus.htm>
technical information: <http://farbe.li.tu-berlin.de> or <http://color.li.tu-berlin.de>



TUB registration: 20240201-geu7/geu7l0np.pdf /.ps
application for evaluation and measurement of display or print output
TUB material: code=rha4ta

geu70-7N, 11/16, colorm=0, kk=5, nk=0, xchart=2, kx(kk)=0.75

TUB-test chart geu7; Change of <http://standards.iso.org/iso/9241/306/ed-2/AE49/AE49L0NP.PDF>
Grey sample lightness decreases by a factor $R=0.75$, no change of RGBCMY, all values on next page

1=0001000=F0

http://farbe.li/... only vector graphic Vg; see separate images of this page: http://farbe.li/...

TUB registration: 20240201-geu7/110np.pdf / ps application for evaluation and measurement of display or print output

see similar files of the whole serie: http://farbe.li/... technical information: http://farbe.li/...

Table with columns A through L* and rows 01 through 27. Each cell contains a numerical value representing color data for different printing conditions.

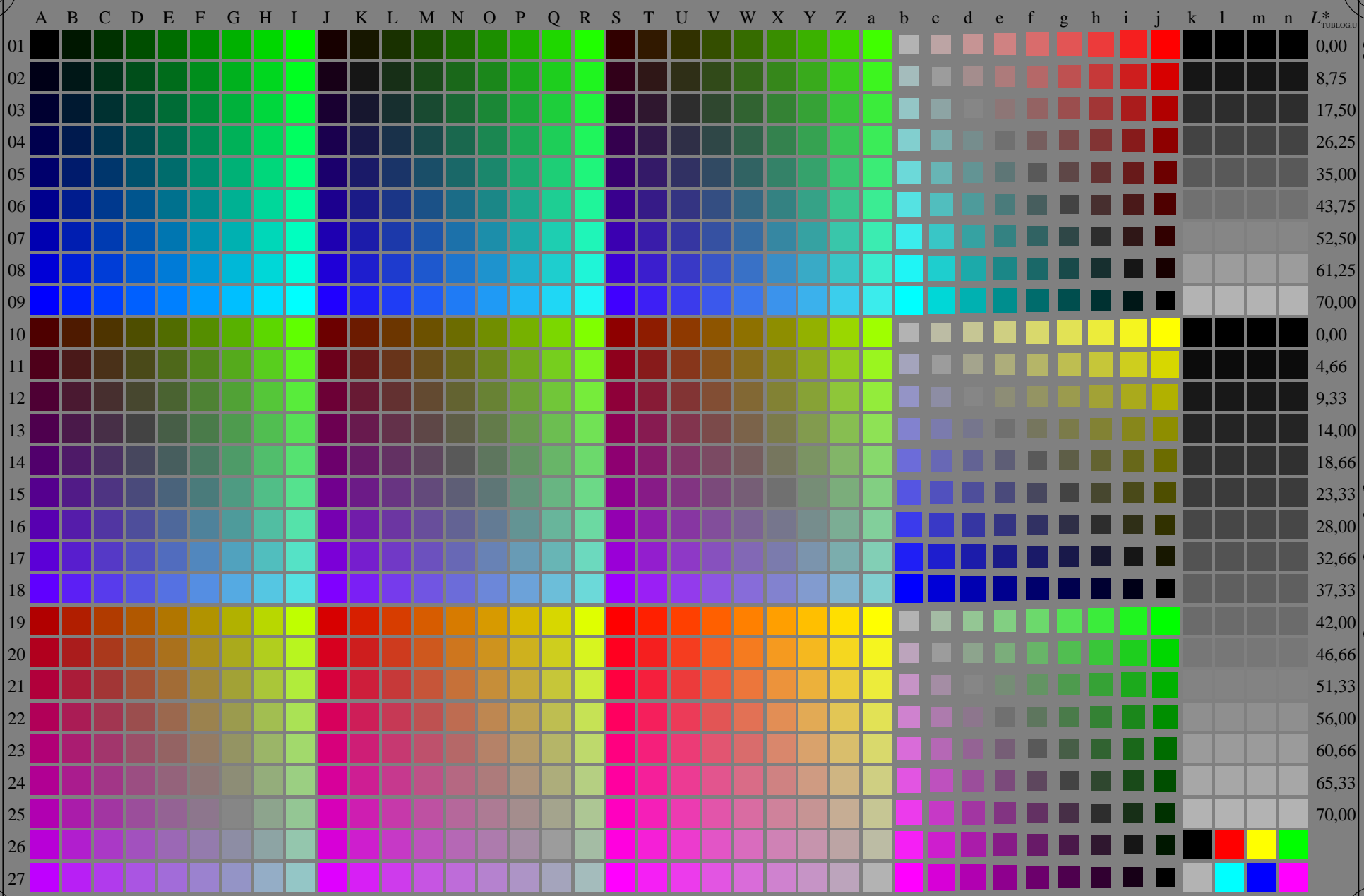
geu70-7N, 1216, colorm=0, kk=5, nk=1, xchart=3, kx(kk)=0.75

TUB test chart geu7; Change of http://standards.iso.org/iso/9244/306-e2/AE49/AE49LONP.PDF Grey sample lightness decreases by a factor 10.0 to 0.75, no change of RGBCM, all values on next page

0001100=100=100=100

<http://farbe.li.tu-berlin.de/geu7/geu7l0np.pdf> /.ps; only vector graphic VG;
see separate images of this page: <http://farbe.li.tu-berlin.de/geu7/geu7.htm>

see similar files of the whole serie: <http://farbe.li.tu-berlin.de/geus.htm>
technical information: <http://farbe.li.tu-berlin.de> or <http://color.li.tu-berlin.de>



TUB registration: 20240201-geu7/geu7l0np.pdf /.ps
application for evaluation and measurement of display or print output
TUB material: code=rha4ta

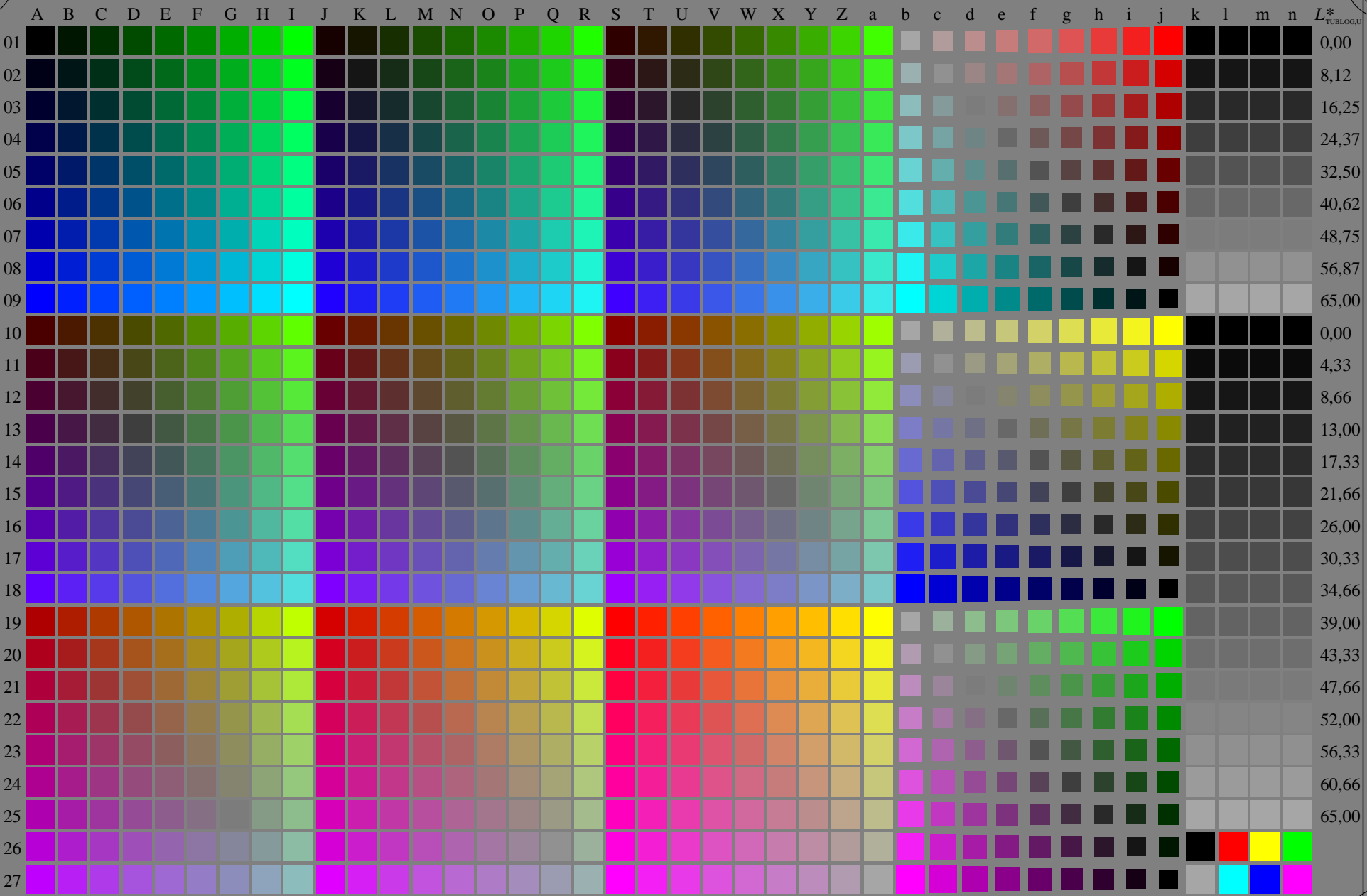
geu70-7N, 13/16, colorm=0, kk=6, nk=0, xchart=2, kx(kk)=0.7

TUB-test chart geu7; Change of <http://standards.iso.org/iso/9241/306/ed-2/AE49/AE49L0NP.PDF>
Grey sample lightness decreases by a factor $R=0.7$, no change of RGBCMY, all values on next page

1=0001200=F0

<http://farbe.li.tu-berlin.de/geu7/geu7l0np.pdf> / .ps; only vector graphic VG;
see separate images of this page: <http://farbe.li.tu-berlin.de/geu7/geu7.htm>

see similar files of the whole serie: <http://farbe.li.tu-berlin.de/geus.htm>
technical information: <http://farbe.li.tu-berlin.de> or <http://color.li.tu-berlin.de>



TUB registration: 20240201-geu7/geu7l0np.pdf / .ps
application for evaluation and measurement of display or print output
TUB material: code=rha4ta

geu70-7N, 15/16, colorm=0, kk=7, nk=0, xchart=2, kx(kk)=0.65

TUB-test chart geu7; Change of <http://standards.iso.org/iso/9241/306/ed-2/AE49/AE49L0NP.PDF>
Grey sample lightness decreases by a factor $R=0.65$, no change of RGBCMY, all values on next page

1=0001400=F0

http://farbe.li.tu-berlin.de/geu7/geu114Onp.pdf / ps; only vector graphic V G; see separate images of this page: http://farbe.li.tu-berlin.de/geu7/geu7.htm

see similar files of the whole serie: http://farbe.li.tu-berlin.de/geus.htm technical information: http://farbe.li.tu-berlin.de OR http://color.li.tu-berlin.de

Table with columns A through L* and rows 01 through 27. Each cell contains a numerical value representing color data for a specific row and column combination.

TUB-test chart geu7; Change of http://standards.iso.org/iso/9241/306ed-2/AE49/AE49LONP.PDF Grey sample lightness decreases by a factor R=0.65, no change of RGB/MY, all values on next page

TUB registration: 202404101-geu710npp.pdf / ps application for evaluation and measurement of display or print output TUB materia: code=phiata

0.00

16.25

24.37

32.50

40.62

48.75

56.87

65.00

0.00

4.33

8.66

13.00

17.33

21.66

26.00

30.33

34.66

39.00

43.33

47.66

52.00

56.33

60.66

65.00