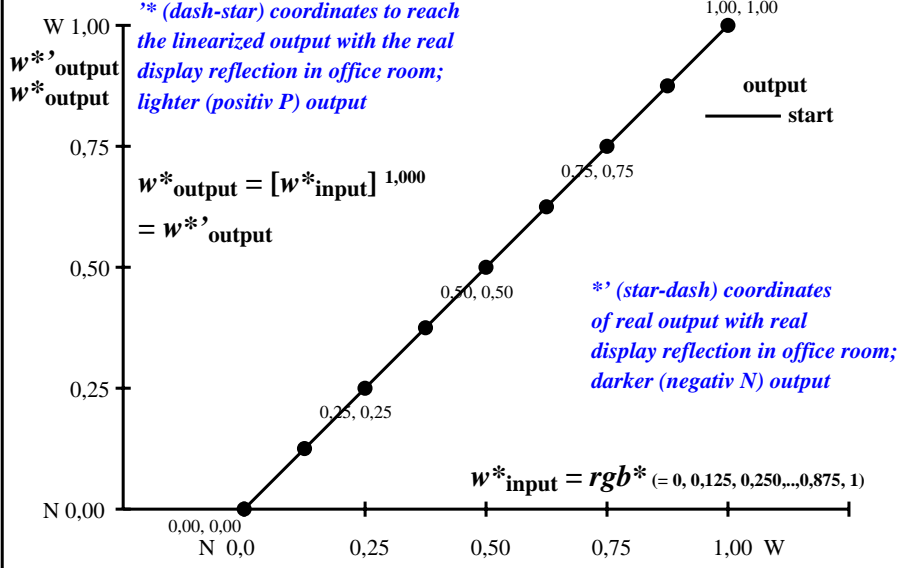
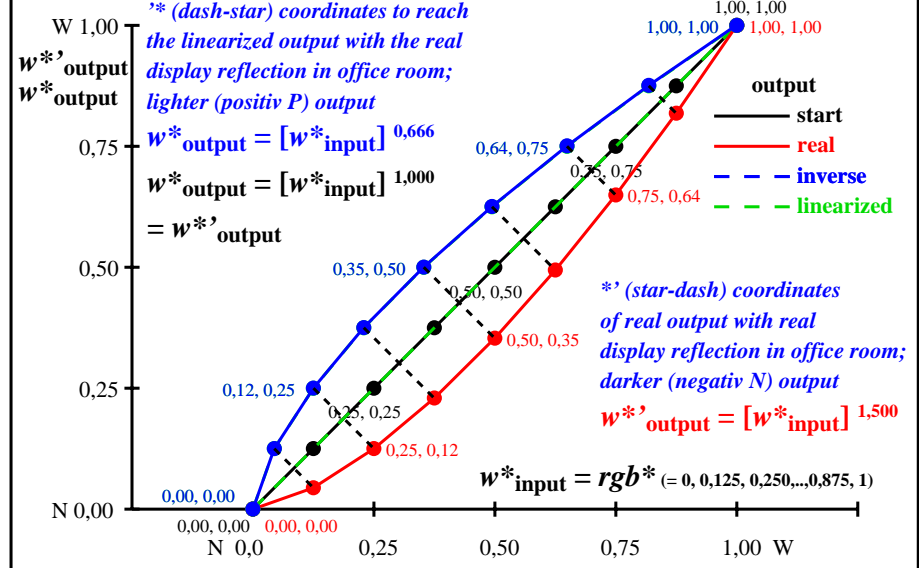


**Colour management for output linearization of a 9 step grey scale**

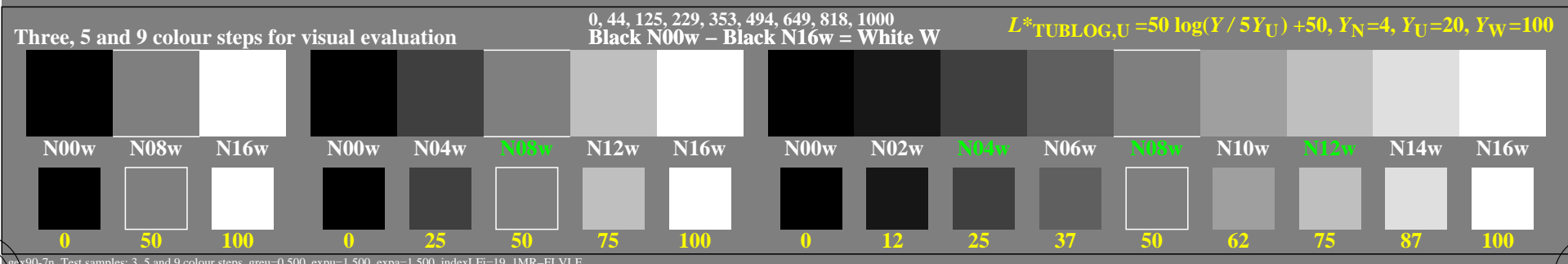
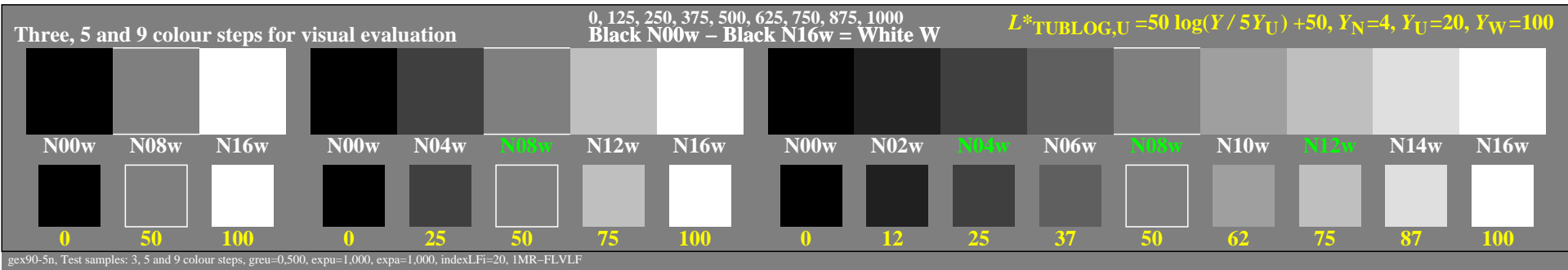


**Colour management for output linearization of a 9 step grey scale**



gex90-3n

gex91-3n



TUB-test chart gex9; Linearization code *IMR-000LF* and Gamma (76 lines) in (1/3/5/7)n  
 Gamma=1 (start), 1,5 (real), 0,667 (inverse); linearisation: Gamma=1(5n), 0,667(7n,d=N06w->N08w)

see similar files of the whole serie: <http://farbe.li.tu-berlin.de/gex9.htm>  
 technical information: <http://farbe.li.tu-berlin.de> OR <http://color.li.tu-berlin.de>

TUB registration: 20240801-gex9/gex910na.txt/.ps  
 application for evaluation and measurement of display or print output

TUB material: code=rhadata