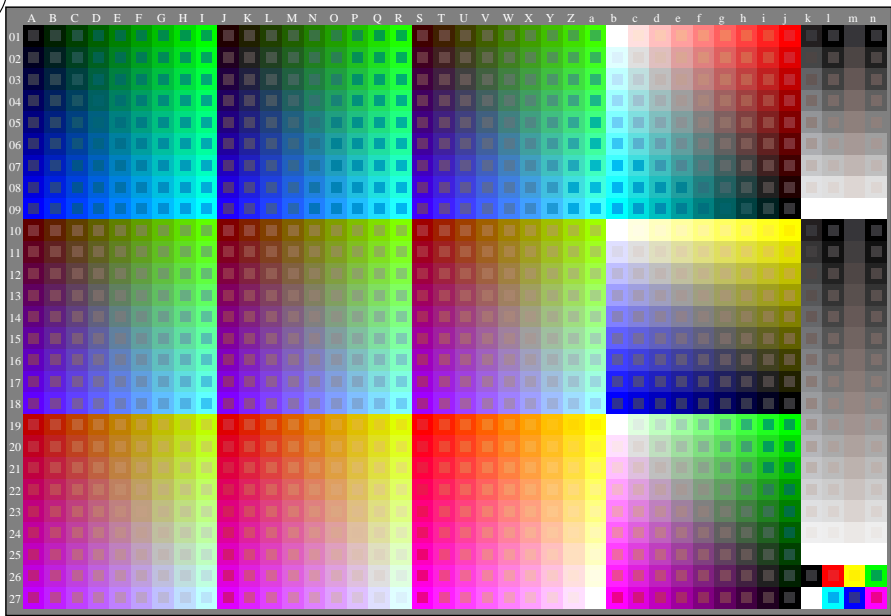


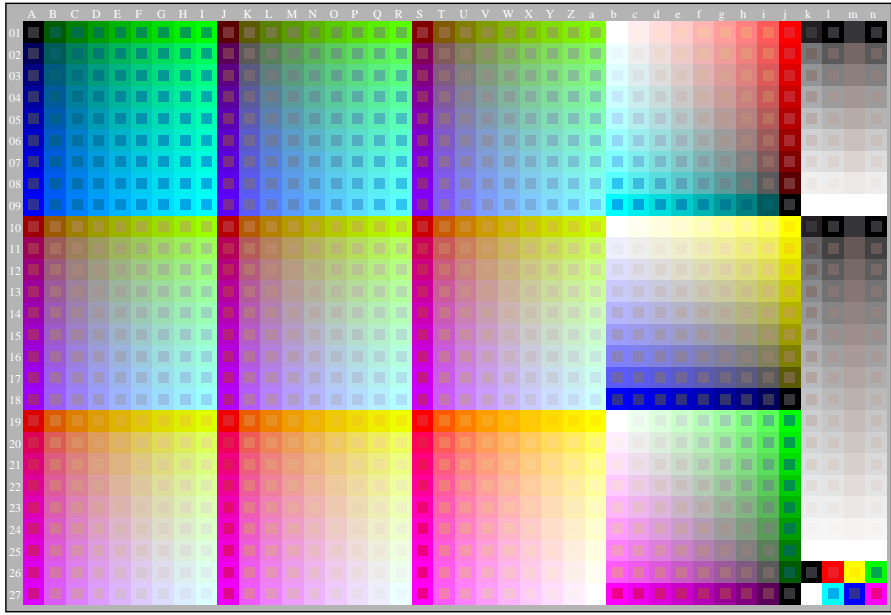
see similar files of the whole serie: <http://farbe.li.tu-berlin.de/geys.htm> technical information: <http://farbe.li.tu-berlin.de> or <http://color.li.tu-berlin.de>

TUB registration: 20240901-gey7/gey710na.txt / .ps application for evaluation and measurement of display or print output

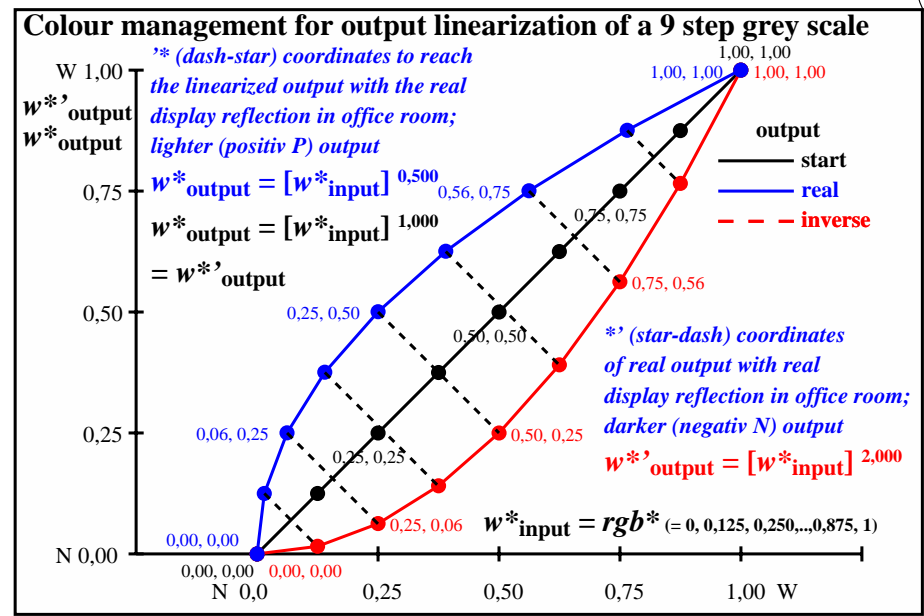
TUB material: code=rh4ta



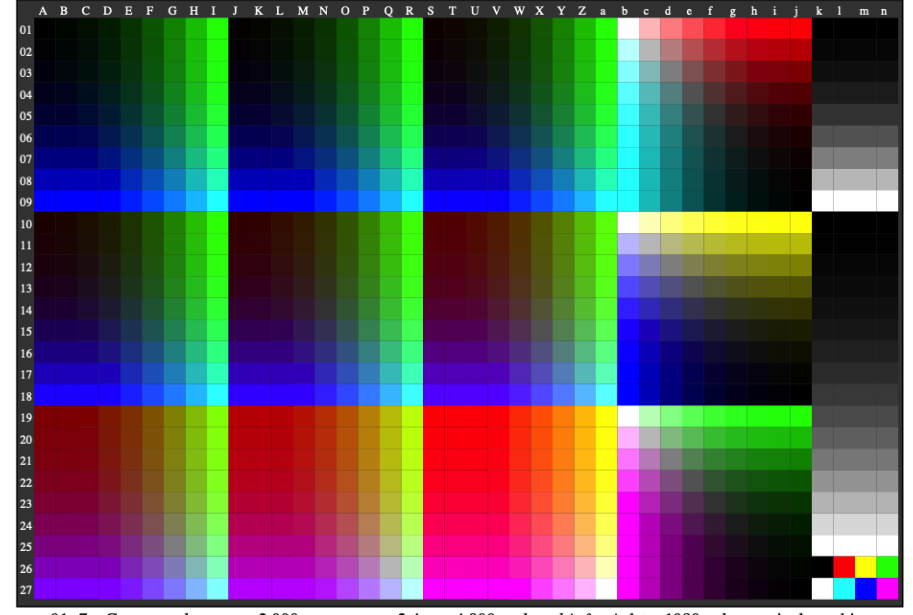
gey70-3n, Gamma values: $g_{rel}=1,000$, $g_{IEC-sRGB}=2,4$, $g_a=2,400$, only rgb^* & w^* data, 1080 colours



gey70-7n, Gamma values: $g_{rel}=0,500$, $g_{IEC-sRGB}=2,4$, $g_a=1,200$, only rgb^* & w^* data, 1080 colours



gey71-3n, Gamma values $g_{rel} = 0,5$ (blue) and $2,0$ (red), not linearized



gey01-7a, Gamma values: $g_{rel}=2,000$, $g_{IEC-sRGB}=2,4$, $g_a=4,800$, only rgb^* & w^* data, 1080 colours, pixel graphic eps

TUB-test chart gey7; Linearization code *IMR-FLVLF* in (0-3/0-7/1-7)n not used
 Gamma=1(0-3), 0,5(0-7, left), 2(1-7, right); all VG; series N-W with 9 steps

