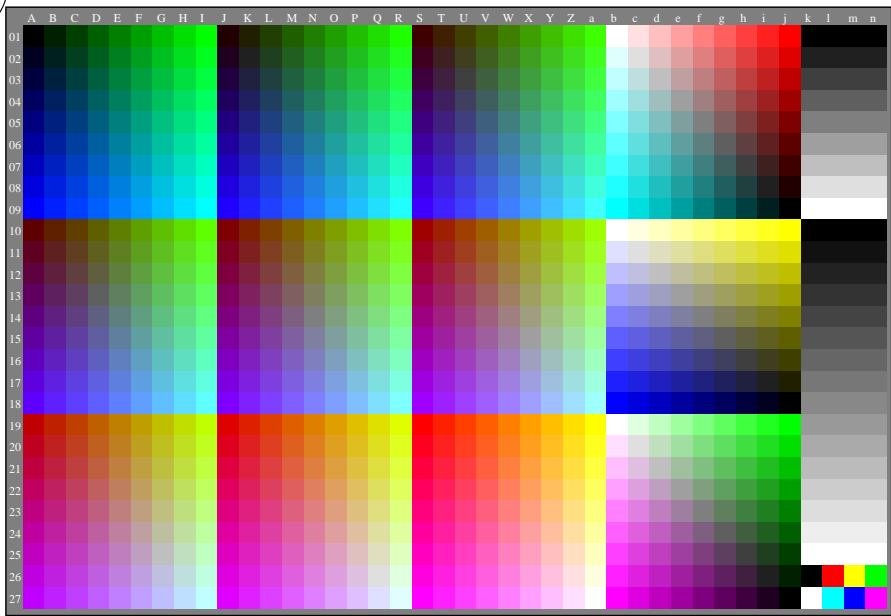


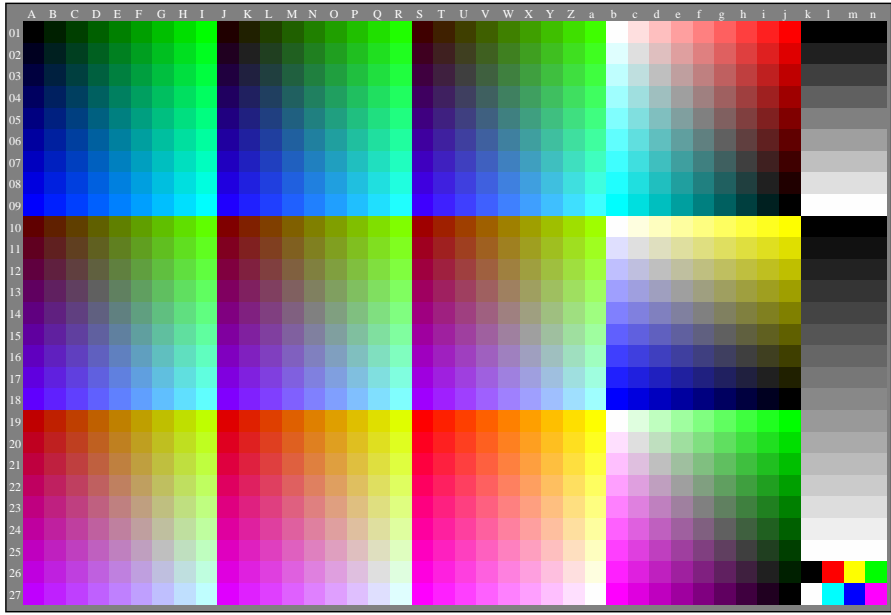
see similar files of the whole serie: <http://farbe.li.tu-berlin.de/geys.htm> technical information: <http://farbe.li.tu-berlin.de> or <http://color.li.tu-berlin.de>

TUB registration: 202240901-gey8/gey810na.txt / .ps application for evaluation and measurement of display or print output

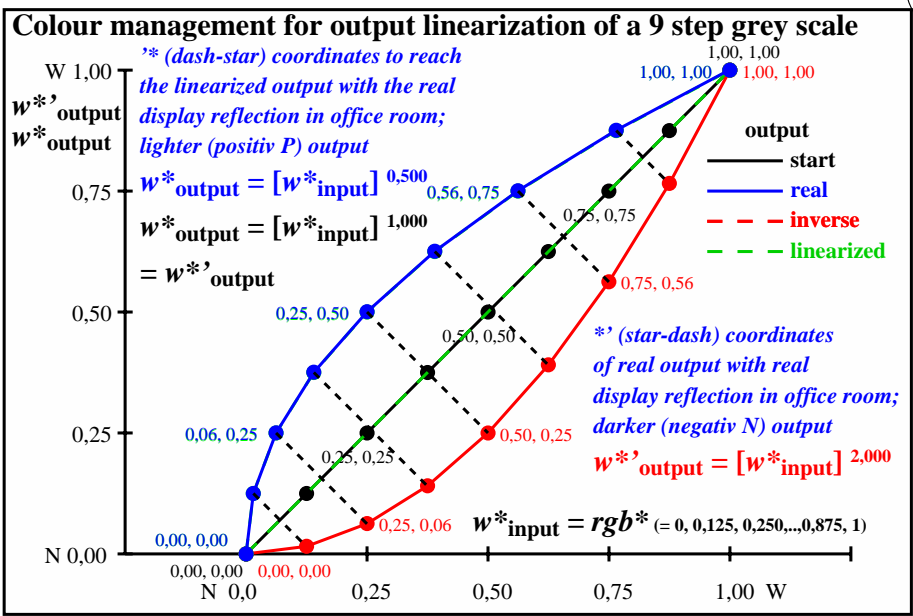
TUB material: code=rha4ta



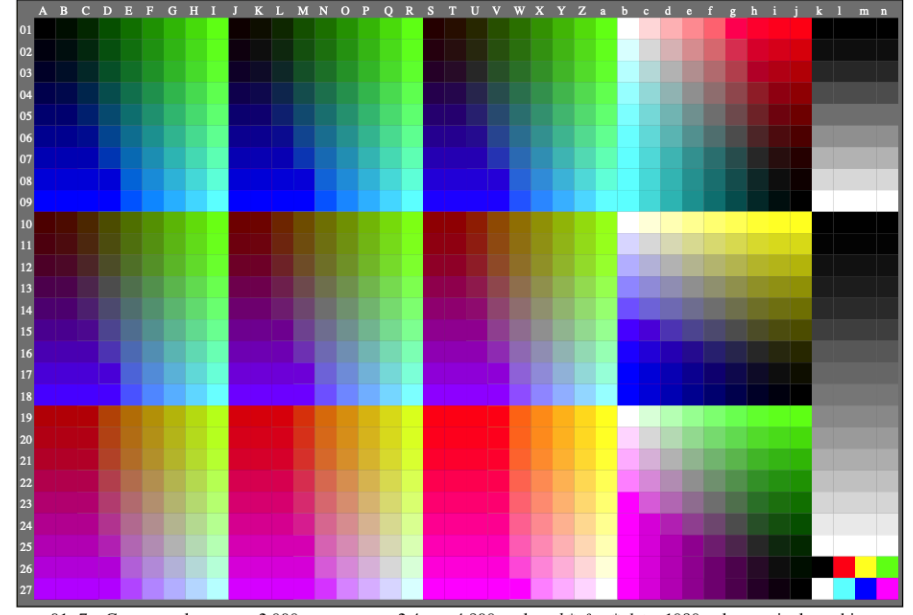
gey80-3n, Gamma values: $g_{rel}=1,000$, $g_{IEC-sRGB}=2,4$, $g_a=2,400$, only rgb^* & w^* data, 1080 colours



gey80-7n, Gamma values: $g_{rel}=0,500$, $g_{IEC-sRGB}=2,4$, $g_a=1,200$, only rgb^* & w^* data, 1080 colours



gey81-3n, Gamma values $g_{rel} = 0,5$ (blue) and $2,0$ (red), linearized (green)



gey01-7a, Gamma values: $g_{rel}=2,000$, $g_{IEC-sRGB}=2,4$, $g_a=4,800$, only rgb^* & w^* data, 1080 colours, pixel graphic eps

