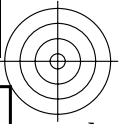
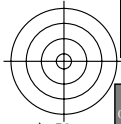


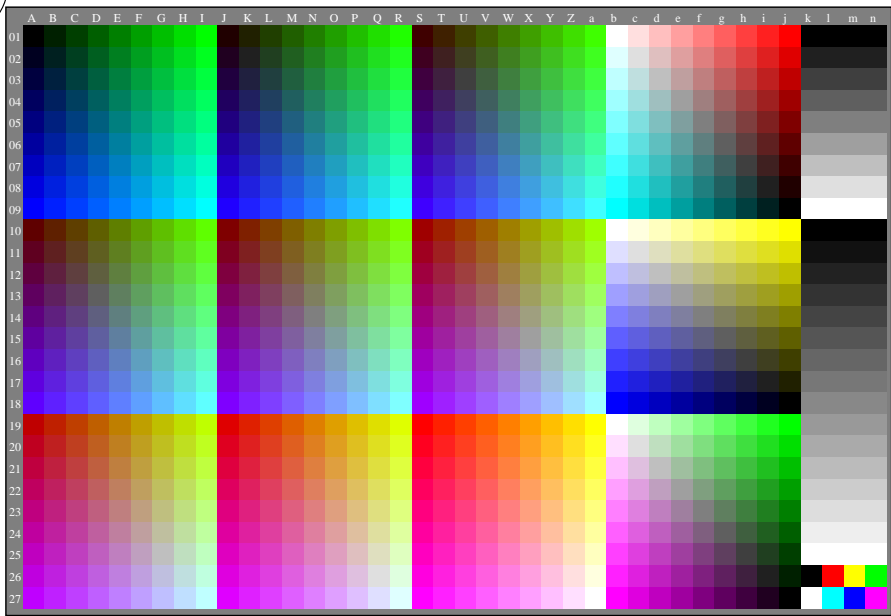
<http://farbe.li.tu-berlin.de/gey9/gey910na.txt> / .ps; vector graphic VG except PG in 1-7; start output see separate images of this page: <http://farbe.li.tu-berlin.de/gey9/gey9.htm>



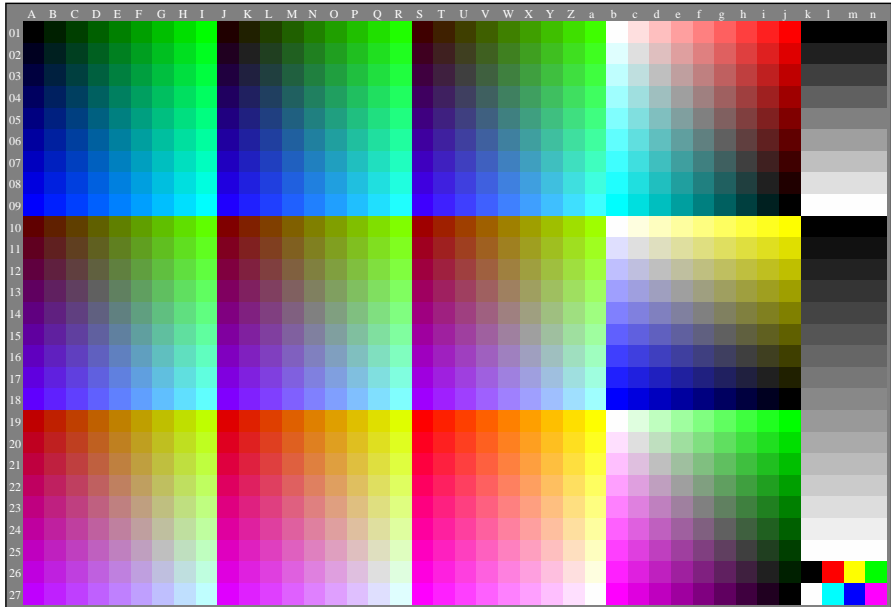
see similar files of the whole serie: <http://farbe.li.tu-berlin.de/geys.htm>
 technical information: <http://farbe.li.tu-berlin.de> or <http://color.li.tu-berlin.de>

TUB registration: 202240901-gey9/gey910na.txt / .ps
 application for evaluation and measurement of display or print output

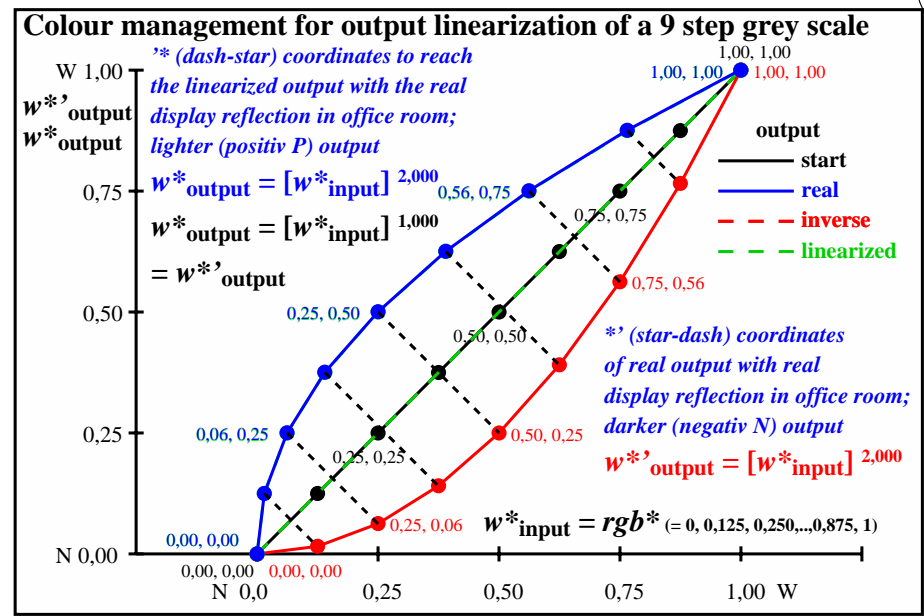
TUB material: code=rha4ta



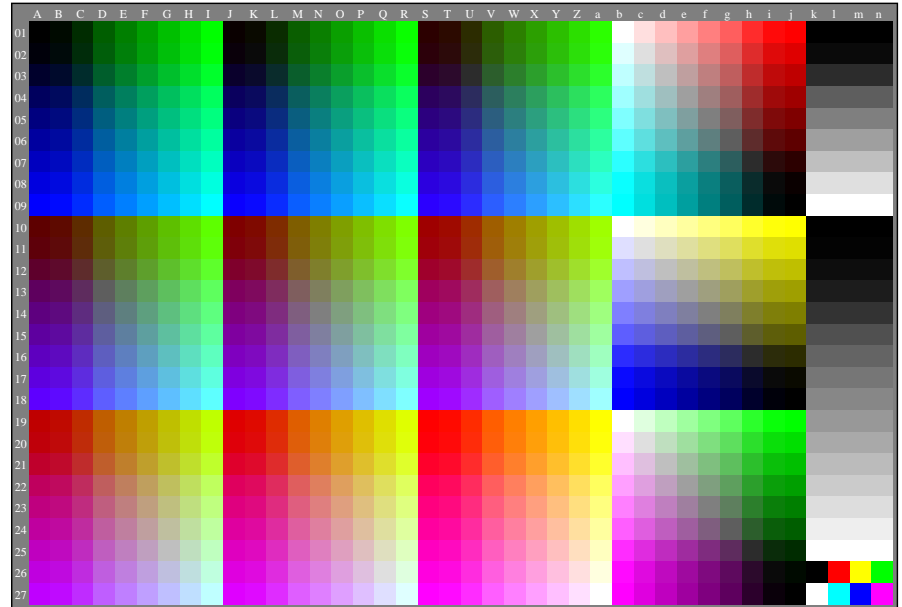
gey90-3n, Gamma values: $g_{rel}=1,000$, $g_{IEC-sRGB}=2,4$, $g_a=2,400$, only rgb^* & w^* data, 1080 colours



gey90-7n, Gamma values: $g_{rel}=0,500$, $g_{IEC-sRGB}=2,4$, $g_a=1,200$, only rgb^* & w^* data, 1080 colours



gey91-3n, Gamma values $g_{rel} = 0,5$ (blue) and $2,0$ (red), linearized (green)



gey91-7n, Gamma values: $g_{rel}=2,000$, $g_{IEC-sRGB}=2,4$, $g_a=4,800$, only rgb^* & w^* data, 1080 colours

TUB-test chart gey9; Linearization code *IMR-FLVLF* (76 lines) in (0-3/0-7/1-7)n used
 Gamma=1(0-3), 0,5(0-7, left), 2(1-7, right); VG except PG in 1-7; series N-W with 9 steps

