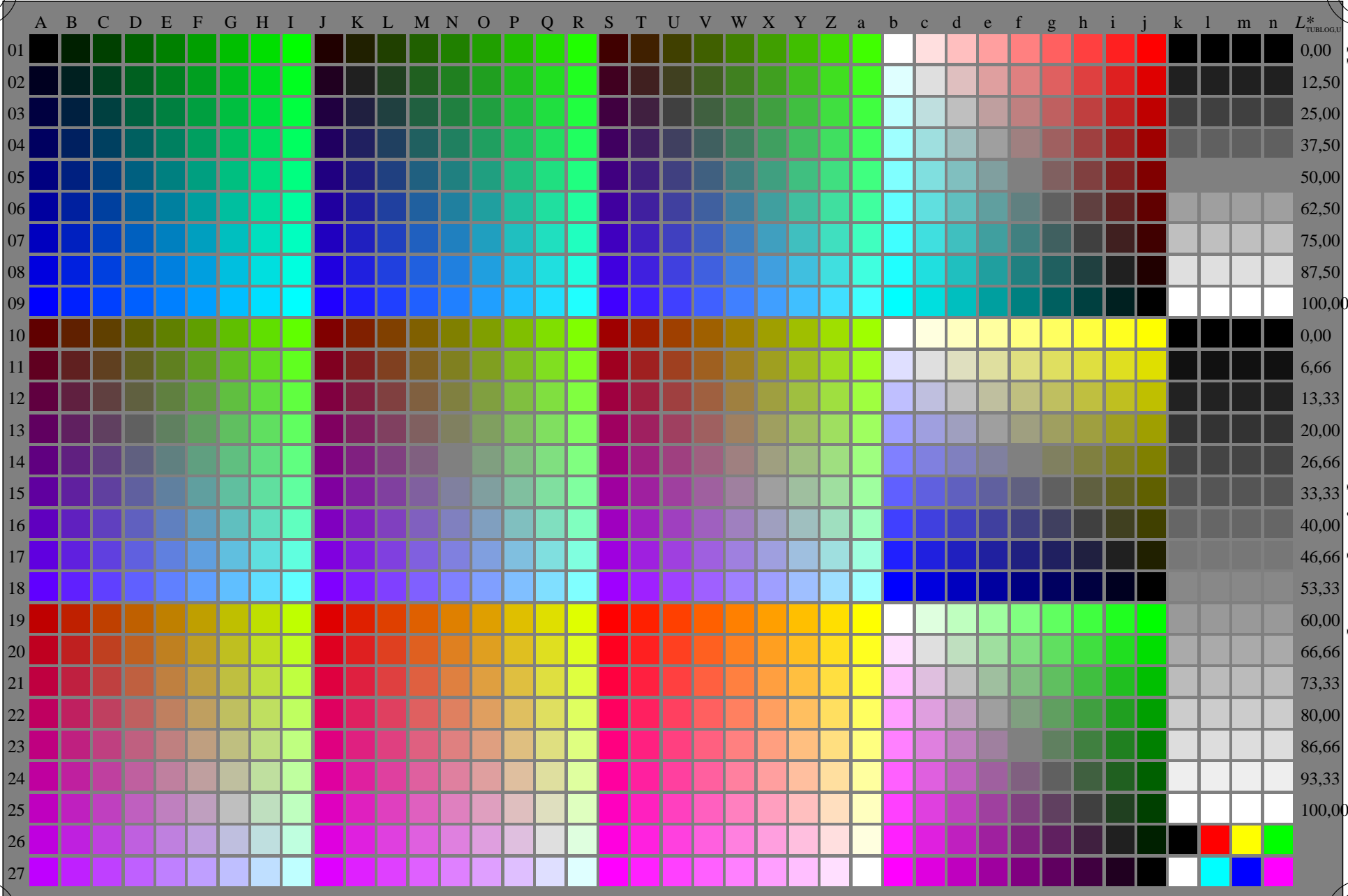


<http://farbe.li.tu-berlin.de/gez6/gez6l0na.txt> /.ps; only vector graphic VG; start output
see separate images of this page: <http://farbe.li.tu-berlin.de/gez6/gez6.htm>

see similar files of the whole serie: <http://farbe.li.tu-berlin.de/gez6/gez6l0na.txt> /ps
technical information: <http://farbe.li.tu-berlin.de> or <http://color.li.tu-berlin.de>



TUB registration: 20240901-gez6/gez6l0na.txt /ps
application for evaluation and measurement of display or print output
TUB material: code=rh4ta

gez6-7n, 1/16, colorm=0, kk=0, nk=0, xchart=2, kx(kk)=1.0

TUB-test chart gez6; Change of <http://standards.iso.org/iso/9241/306/ed-2/AE49/AE49L0NP.PDF>
For lightness $L^*_{TUBLOG,U} = [50/\log(5)] \log(Y/Y_U) + 50$, $Y_N = 4$, $Y_U = 20$, $Y_W = 100$ is $0 \leq L^* \leq 100$