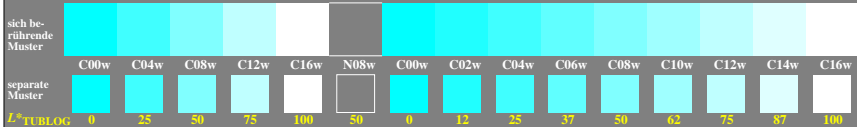
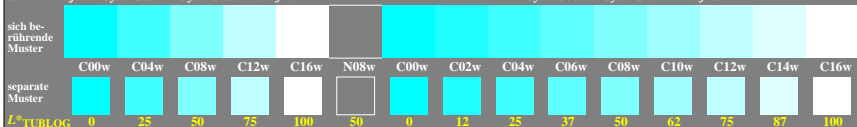


5/9 Farbstufen: Cyan C00w – Cyan C16w = Weiß W 0, 125, 250, 375, 500, 625, 750, 875, 1000 Cyan C00w – Cyan C16w = Weiß W



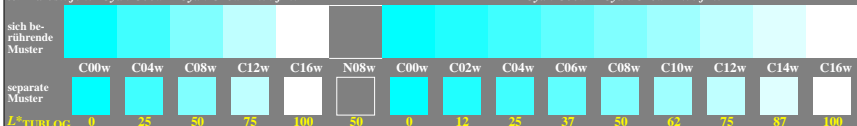
ggf10-1a, Prüfmuster: 5 und 9 Farbstufen, exp0=1, exp9=1, inv=1

5/9 Farbstufen: Cyan C00w – Cyan C16w = Weiß W 0, 125, 250, 375, 500, 625, 750, 875, 1000 Cyan C00w – Cyan C16w = Weiß W



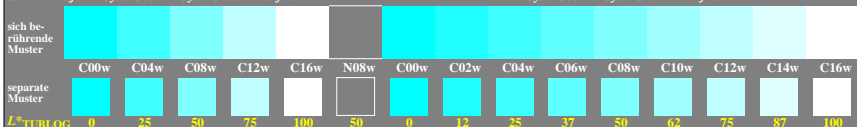
ggf10-3a, Prüfmuster: 5 und 9 Farbstufen, exp0=1, exp9=1, inv=1

5/9 Farbstufen: Cyan C00w – Cyan C16w = Weiß W 0, 125, 250, 375, 500, 625, 750, 875, 1000 Cyan C00w – Cyan C16w = Weiß W



ggf10-5a, Prüfmuster: 5 und 9 Farbstufen, exp0=1, exp9=1, inv=1

5/9 Farbstufen: Cyan C00w – Cyan C16w = Weiß W 0, 125, 250, 375, 500, 625, 750, 875, 1000 Cyan C00w – Cyan C16w = Weiß W



ggf10-7a, Prüfmuster: 5 und 9 Farbstufen, exp0=1, exp9=1, inv=1

L\*<sub>TUBLOG</sub> vis  
 100 150?  
 87 137?  
 75 125?  
 62 112?  
 50 100?

L\*<sub>TUBLOG</sub> vis  
 100 150?  
 87 137?  
 75 125?  
 62 112?  
 50 100?