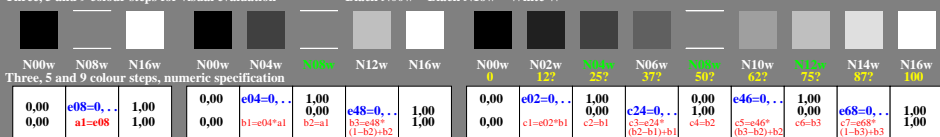


hef90-3n

hef91-3n

Three, 5 and 9 colour steps for visual evaluation

s: 0, 125, 250, 375, 500, 625, 750, 875, 1000
 Black N00w – Black N16w = White W $L^* \text{TUBLOG}_U = [50 \log(5)] \log(Y/Y_U) + 50, Y_N = 4, Y_U = 20, Y_W = 100$



hef90-7n

TUB-test chart hef9: Separate grey samples for visual interval scaling, evaluation of the series N-W with 3, 5 and 9 steps, output (rgb^*)^{1.0} & experimental; surround mean Grey U=N08w

see similar files of the whole serie: <http://farbe.li.tu-berlin.de/hef9/hef9.htm>
 technical information: <http://farbe.li.tu-berlin.de> or <http://color.li.tu-berlin.de>

TUB registration: 20241001-hef9/hef910n1.txt / .ps
 application for evaluation and measurement of display or print output
 TUB material: code=thadta