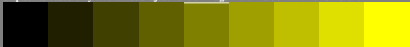


9 step series based only on the visual adjustment of image 1 with value "0.50" or different



9 step series based on all visual adjustments used for output linearization



0,00 $c_1=0,12$ $c_2=0,25$ $c_3=0,37$ $c_4=0,50$ $c_5=0,62$ $c_6=0,75$ $c_7=0,87$ 1,00

calculation with visual experimental (e) data adjusted above

$a_1=e_{08}$, $b_1=e_{04}*a_1$, $b_3=e_{48}(1-b_2)+b_2$, $c_2=b_1$, $c_4=b_2$, $c_6=b_3$

$c_1=e_{02}*b_1$, $c_3=e_{24}(b_2-b_2)+b_1$, $c_5=e_{46}(b_3-b_2)+b_2$, $c_7=e_{68}(1-b_3)+b_3$

save 7 data above as text

save 9 data below as text

+0,04 ⚡ +0,04 ⚡ +0,04 ⚡ +0,04 ⚡ +0,04 ⚡ +0,04 ⚡ +0,04 ⚡ +0,04 ⚡ -0,04 ⚡



0,00 $c_1=0,12$ $c_2=0,25$ $c_3=0,37$ $c_4=0,50$ $c_5=0,62$ $c_6=0,75$ $c_7=0,87$ 1,00

grey example
difference visible?



0,25 +0,06 ⚡ adjust threshold
0,25 +0,00 ⚡ no change

adjust and proof threshold of
the linearized output

restart with image 1

heq00-4a, image 4, adjust visual threshold (+0,04?) of 9 steps; all equal?